



Ships
**February
2027**

Red White and Blue

by Andover Fabrics

Catalog
May 2026

Order By
October 2026

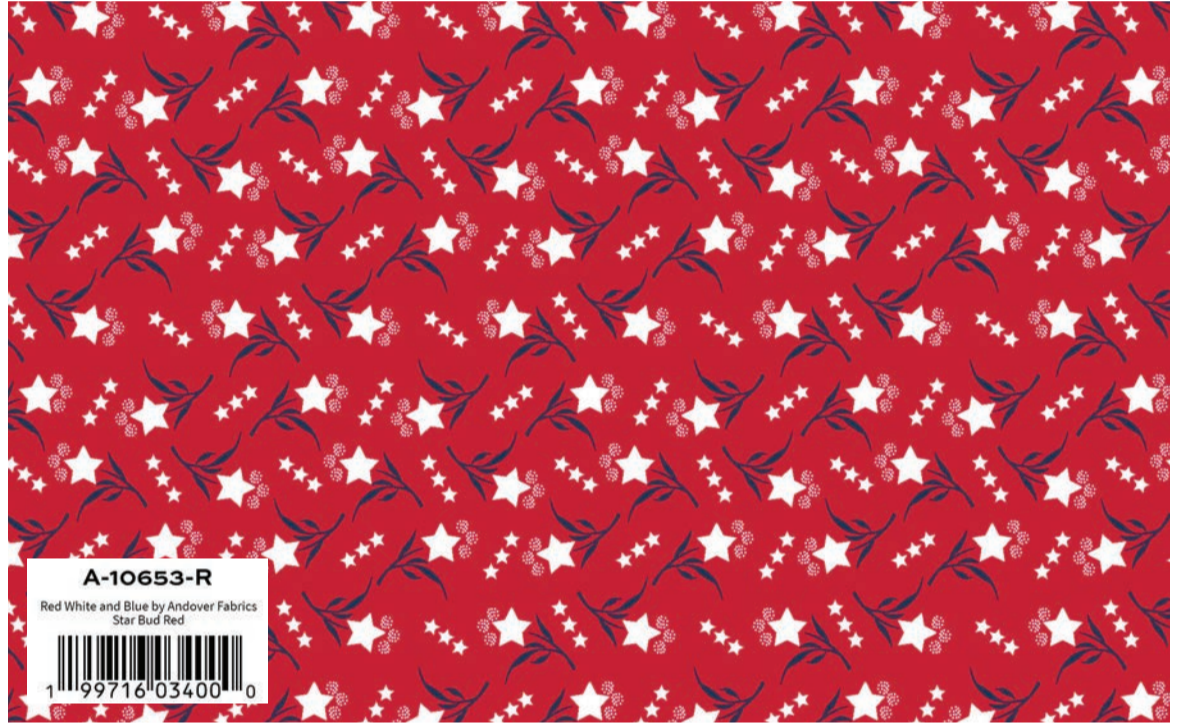
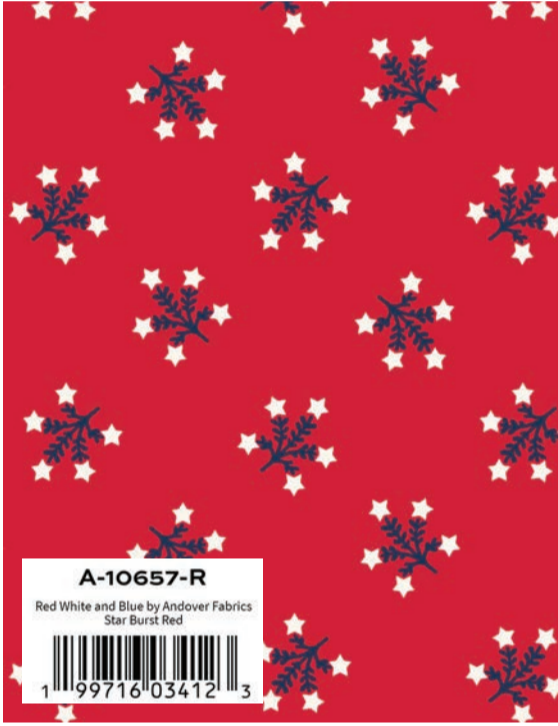


Red White and Blue by Andover Fabrics

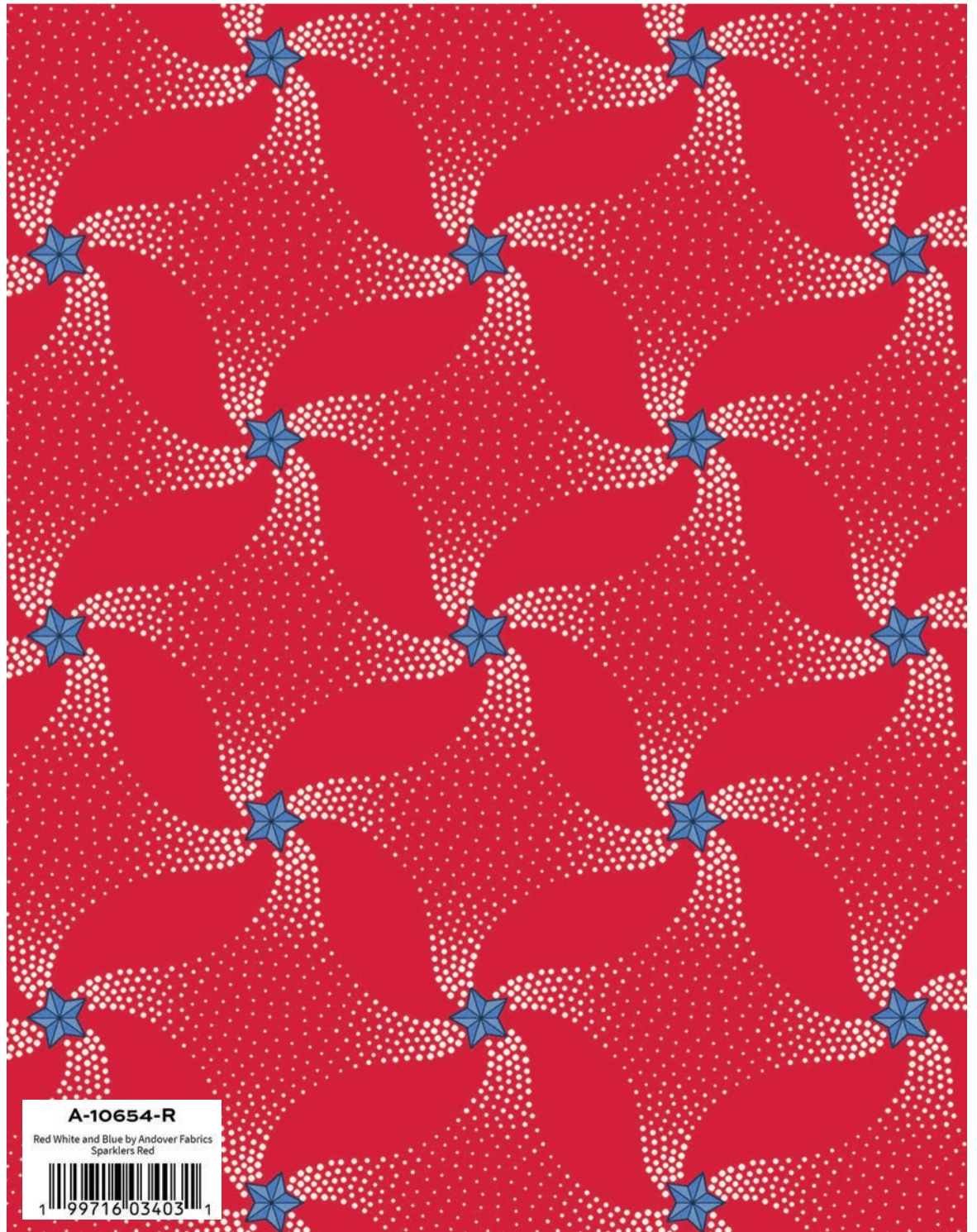
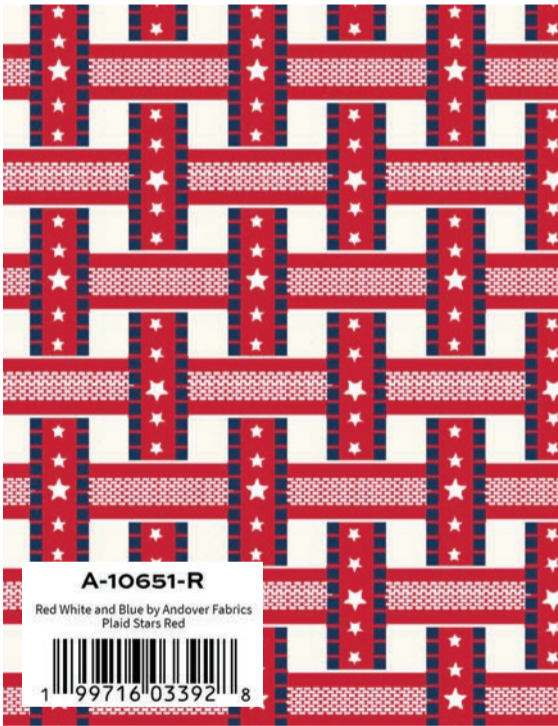
CS-10-SNOW



CS-10-CREAM

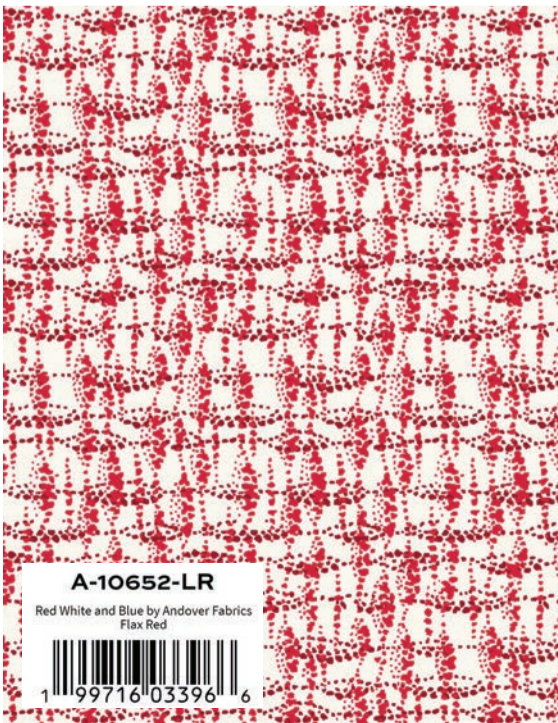


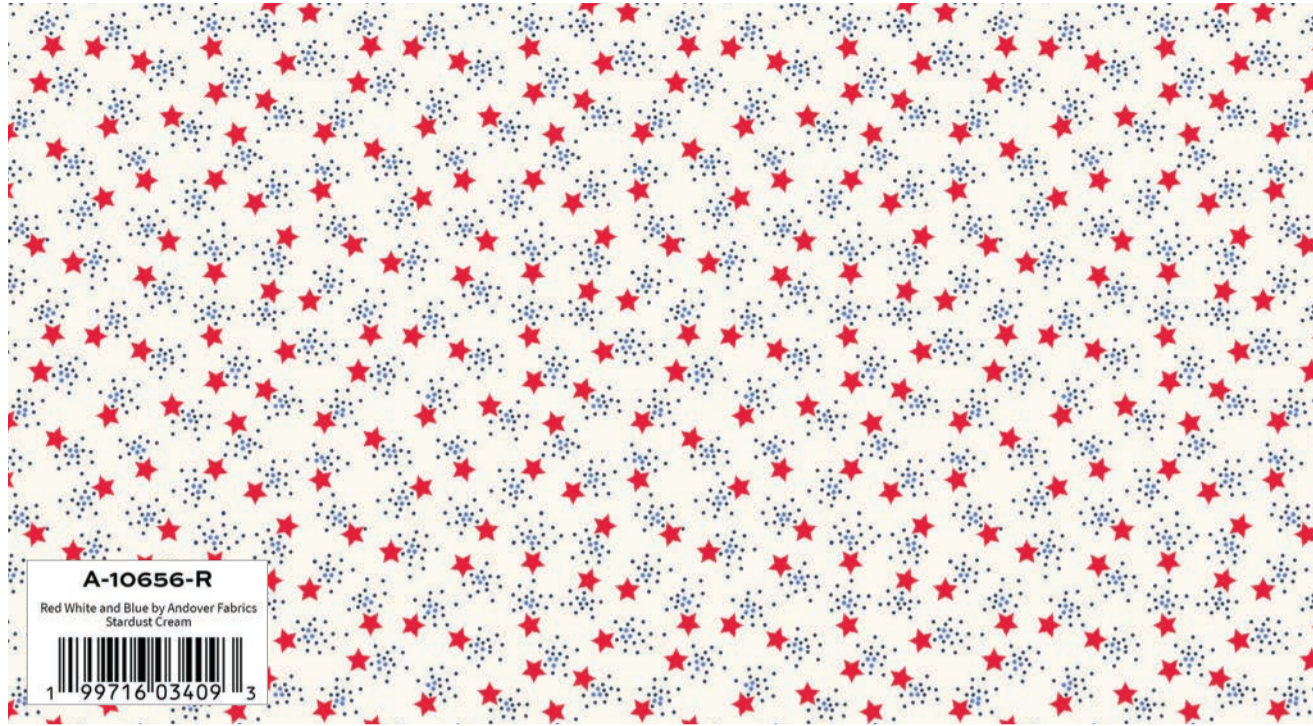
CS-10-RED



CS-10-REDWOOD

Century Solids Coordinates

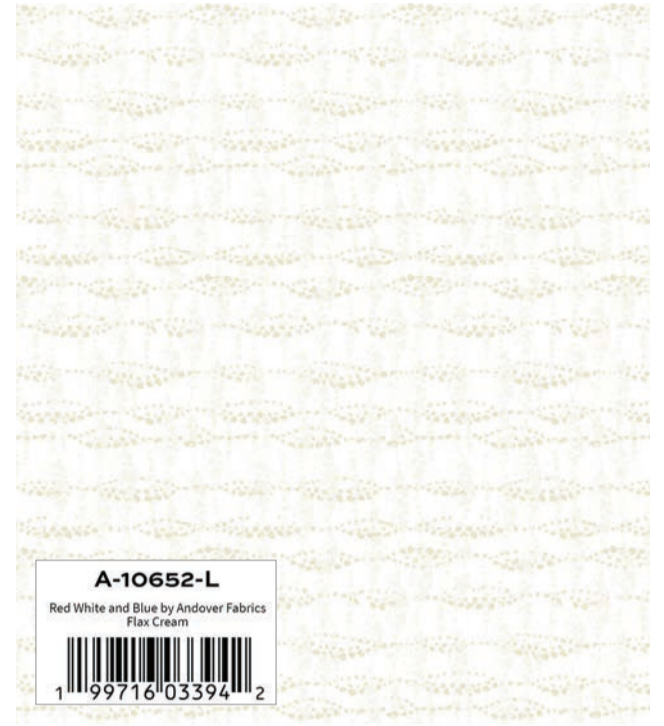




A-10656-R
Red White and Blue by Andover Fabrics
Stardust Cream



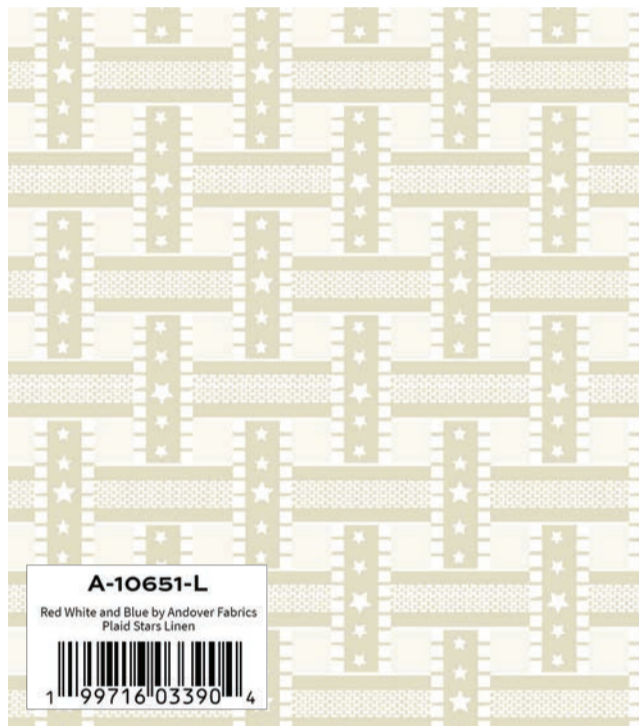
1 99716 03409 3



A-10652-L
Red White and Blue by Andover Fabrics
Flax Cream



1 99716 03394 2



A-10651-L
Red White and Blue by Andover Fabrics
Plaid Stars Linen



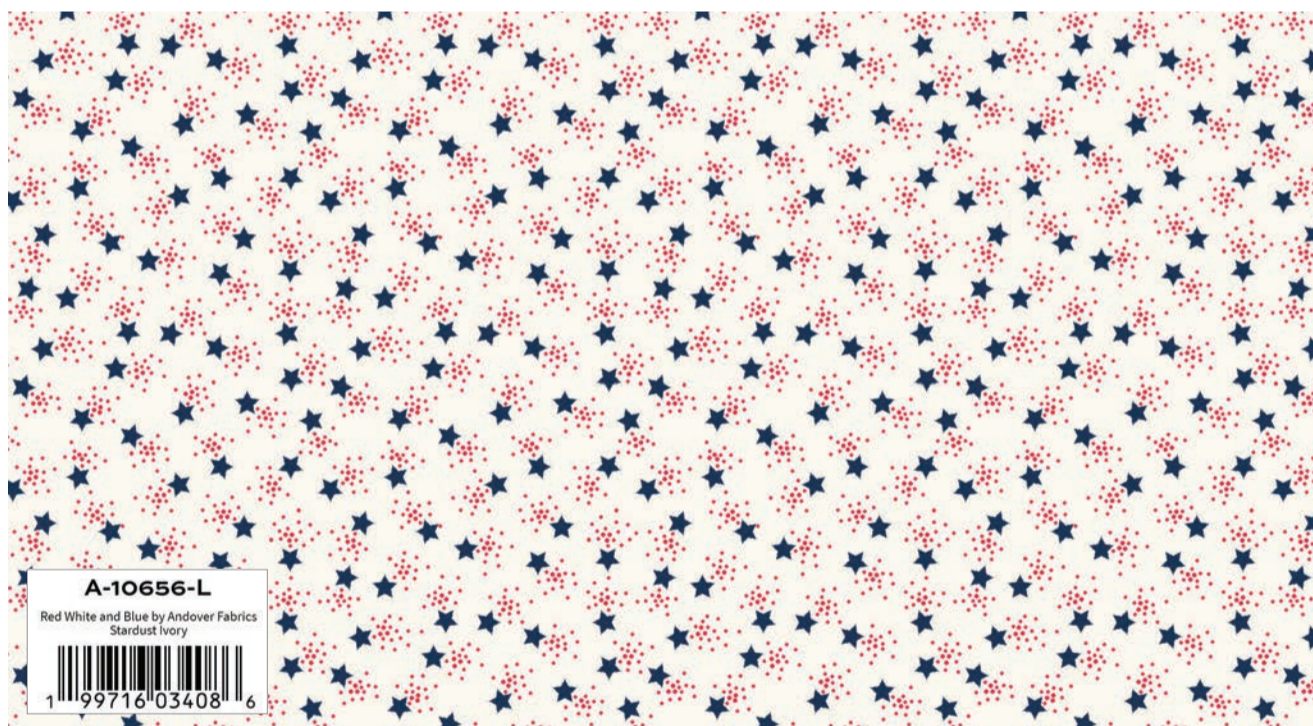
1 99716 03390 4



A-10654-L
Red White and Blue by Andover Fabrics
Sparklers Cream



1 99716 03402 4



A-10656-L
Red White and Blue by Andover Fabrics
Stardust Ivory



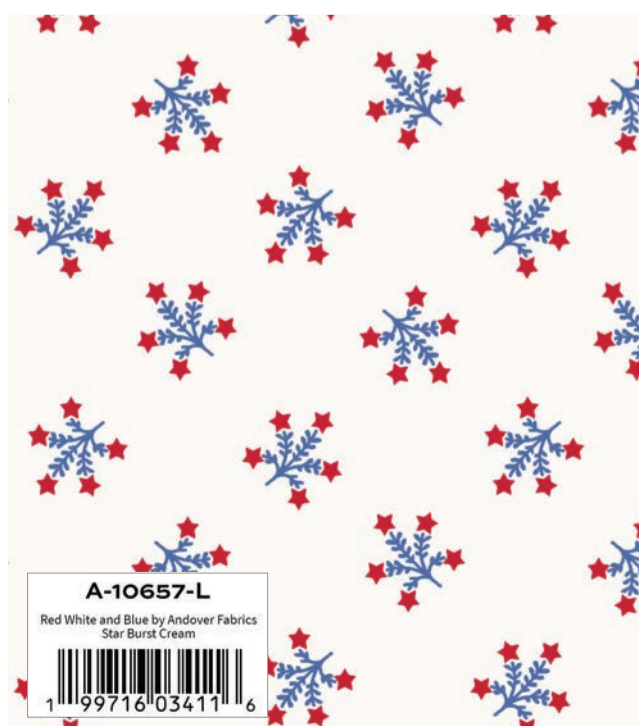
1 99716 03408 6



A-10653-L
Red White and Blue by Andover Fabrics
Star Bud Cream



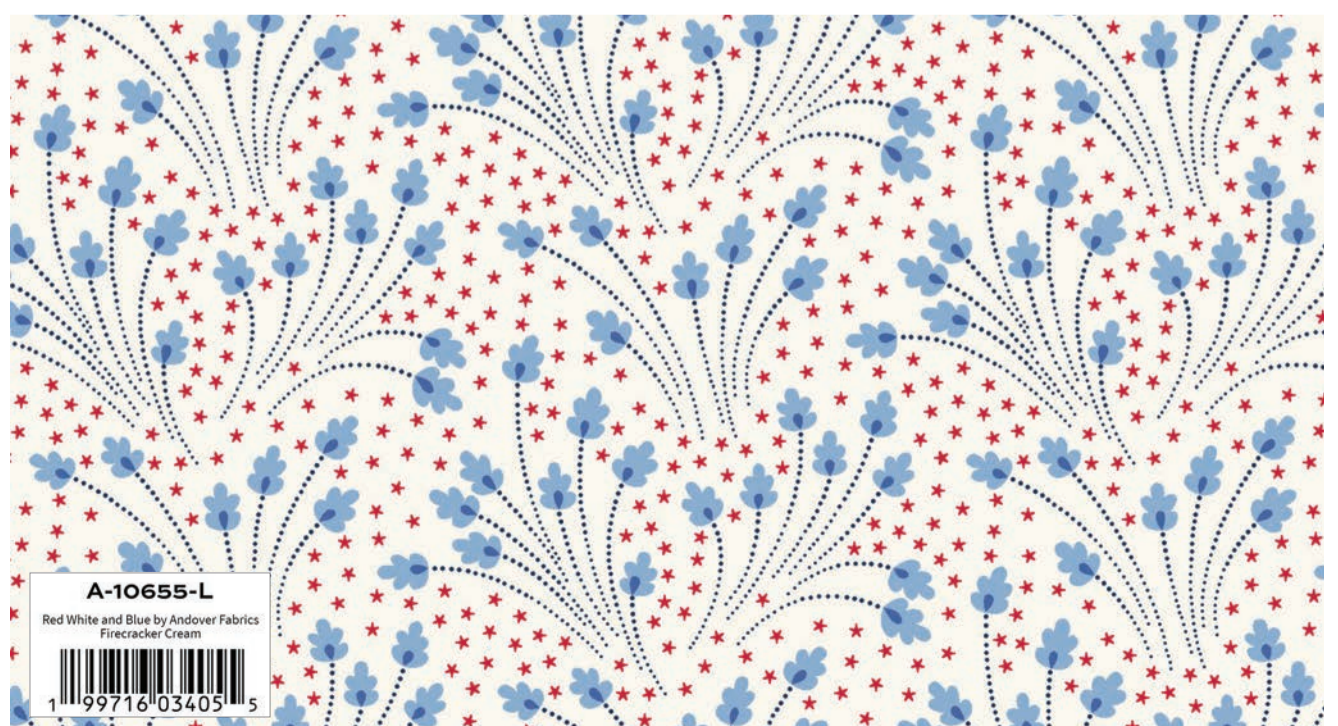
1 99716 03399 7



A-10657-L
Red White and Blue by Andover Fabrics
Star Burst Cream



1 99716 03411 6



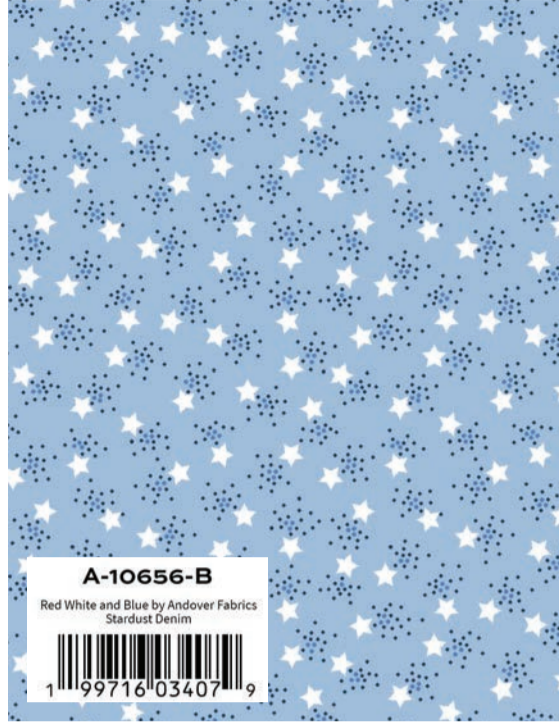
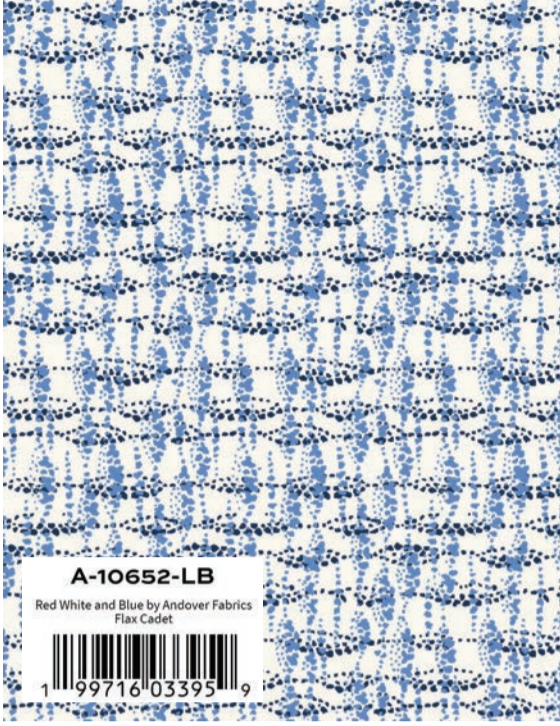
A-10655-L
Red White and Blue by Andover Fabrics
Firecracker Cream



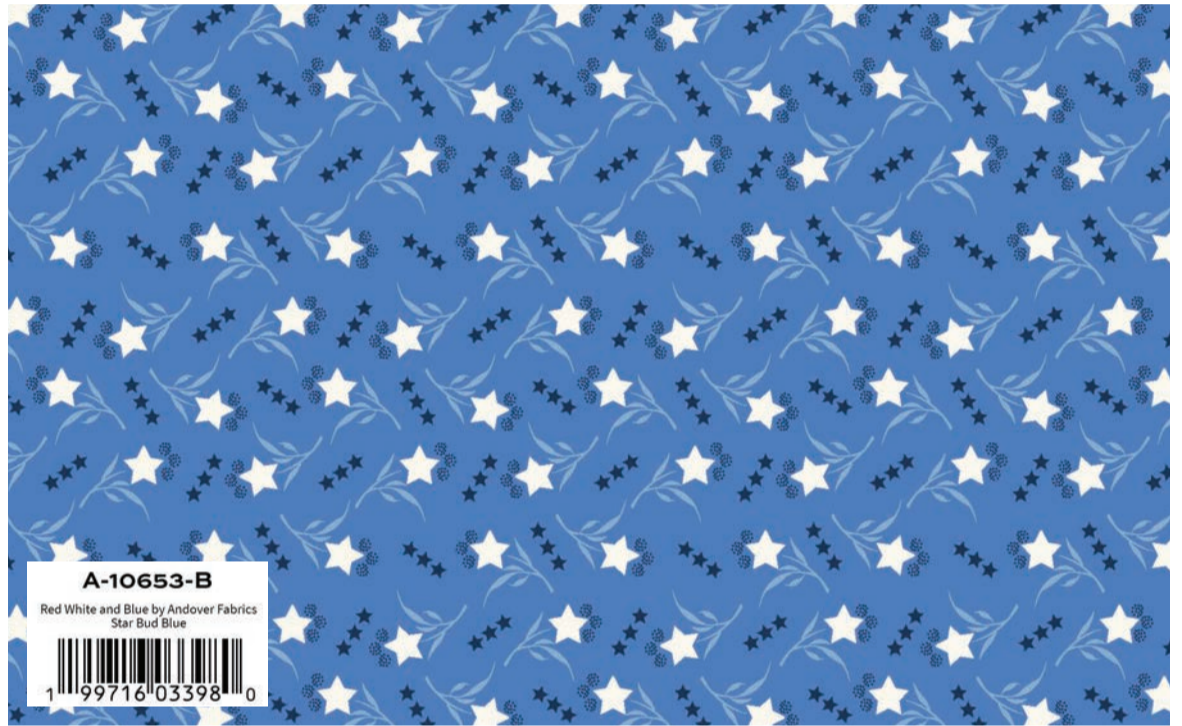
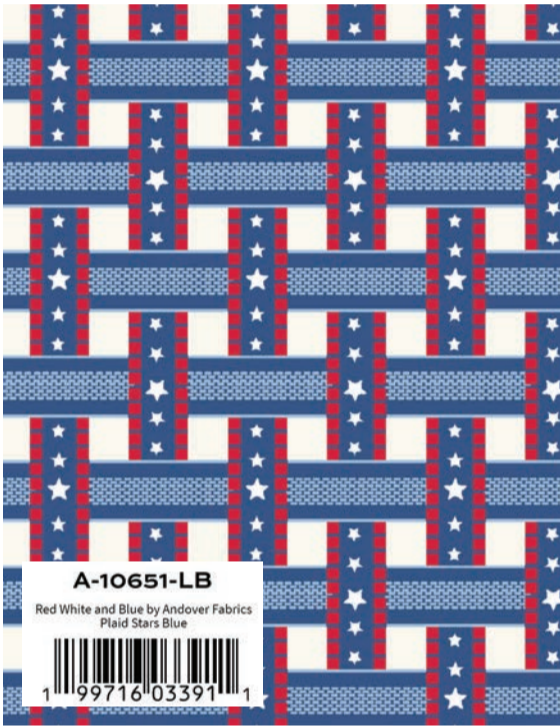
1 99716 03405 5

Red White and Blue by Andover Fabrics

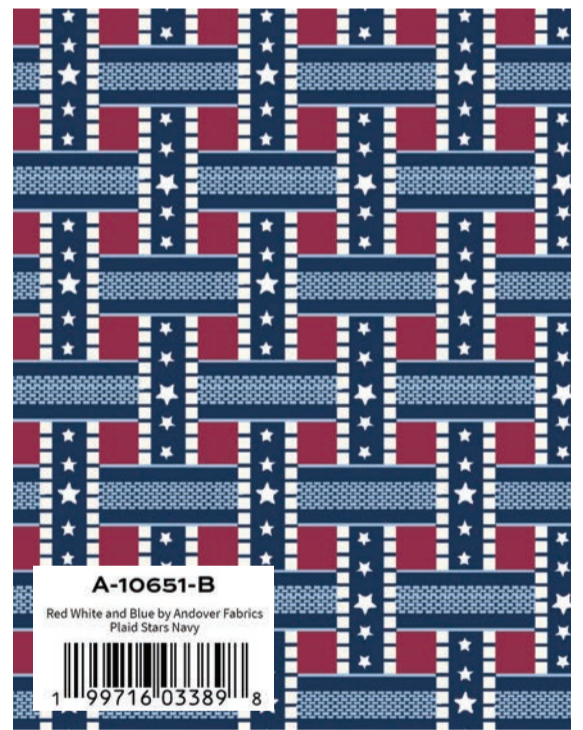
CS-10-COTTONBALL



CS-10-SKY

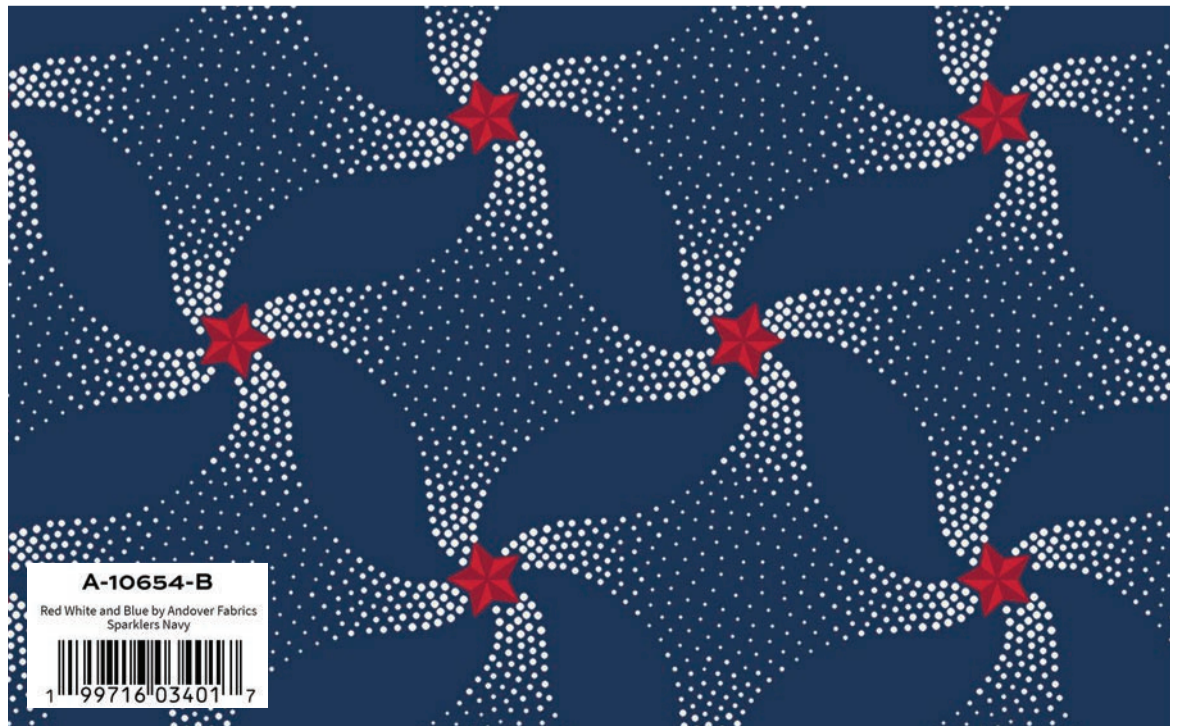
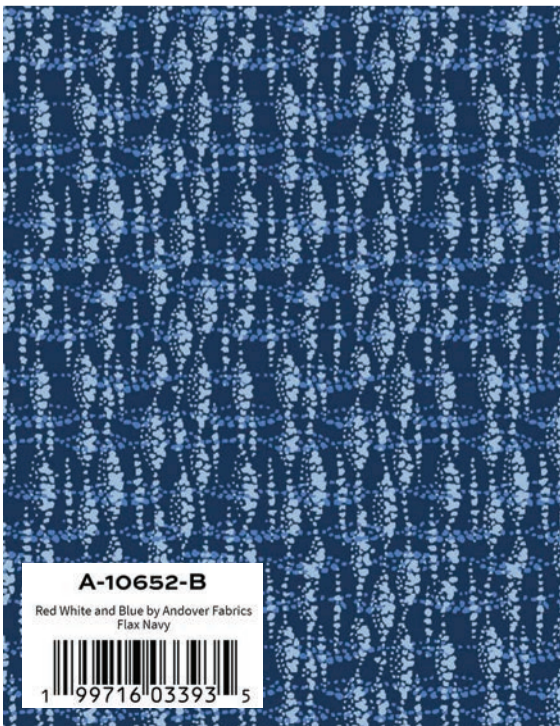


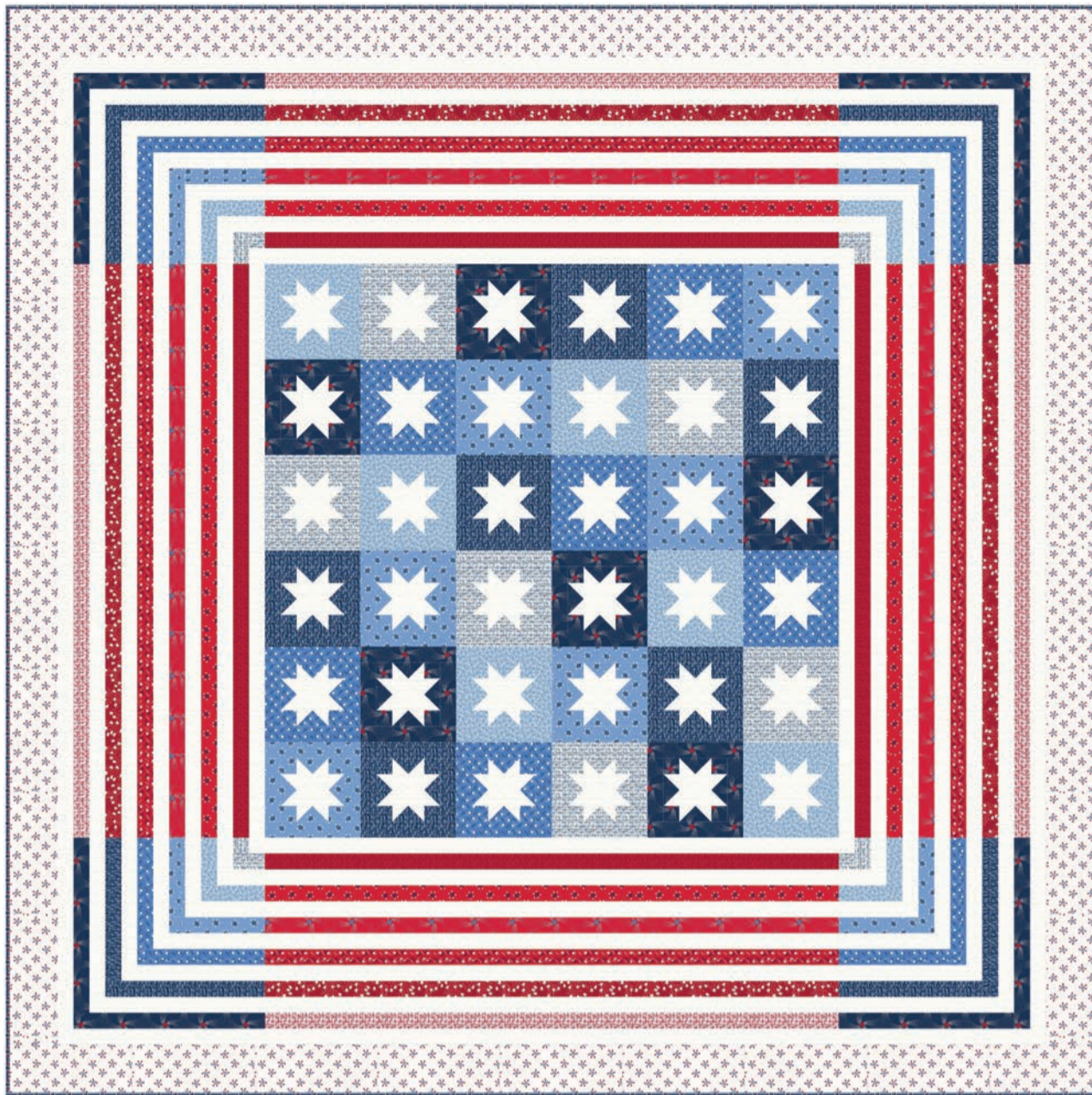
CS-10-SAPPHIRE



CS-10-UNIFORM

Century Solids Coordinates





My Home Sweet Home

Quilt Design: **Wendy Sheppard**
 Skill Level: **Confident Beginner**
 Quilt Size: **68" x 68"**

FABRIC	1 KIT	6 KITS
FROM EACH	¼ yd	1½ yds
10652-LR 10652-R 10653-R 10654-R 10655-R 10657-R		
FROM EACH	¾ yd	2¼ yds
10652-LB 10656-B		
FROM EACH	½ yd	3 yds
10652-B 10653-B 10654-B 10657-B		
10657-L	¾ yd	4½ yds
10652-L	2½ yds	15 yds
10651-B (Binding)	⅝ yd	3¾ yds
10656-L (Backing)	4¼ yds	25½ yds



1-800-537-1060
 www.checkerdist.com
 custservice@checkerdist.com

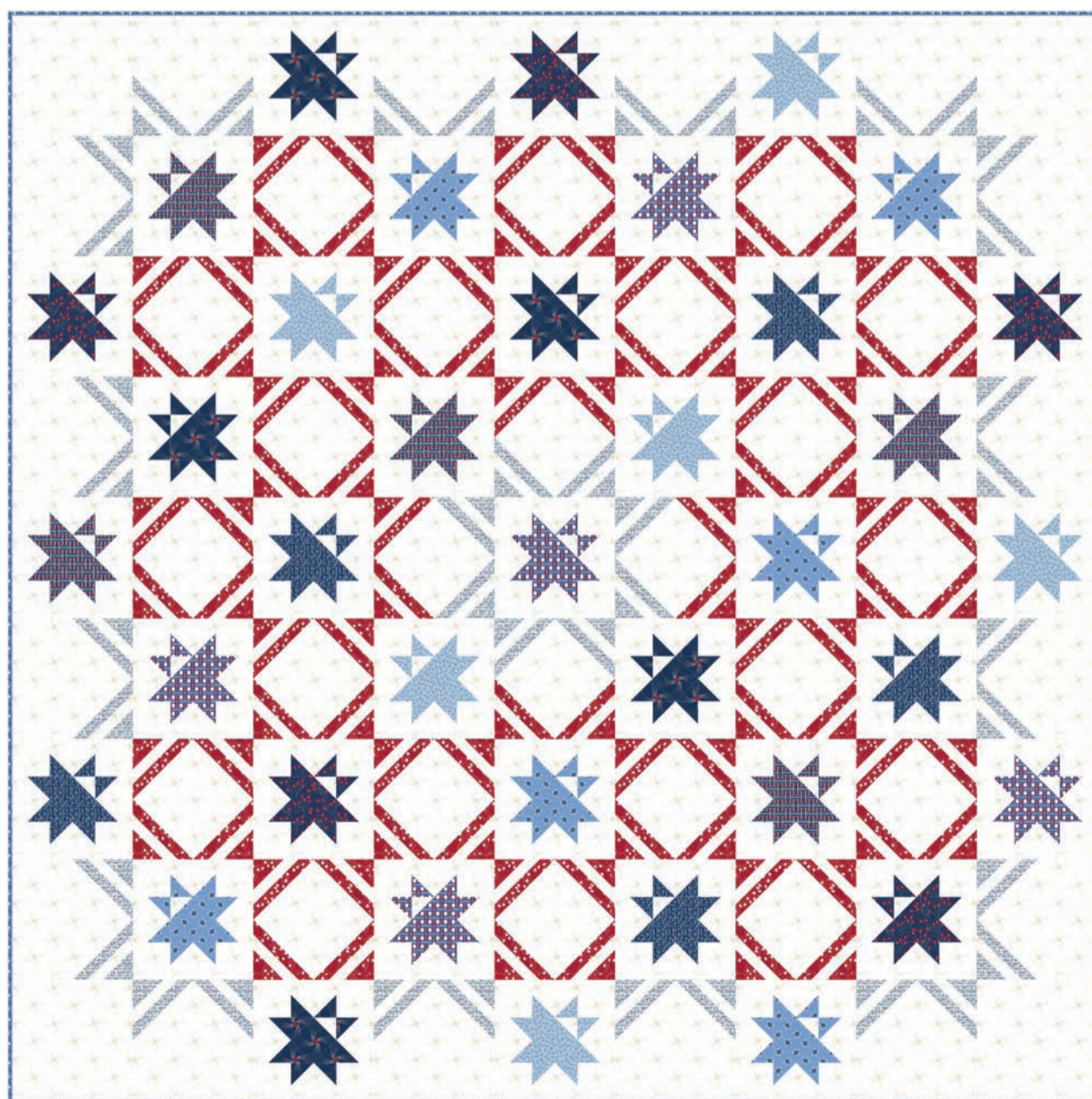
Starshine

Quilt Design: **Wendy Sheppard**
 Skill Level: **Confident Beginner**
 Quilt Size: **72" x 72"**

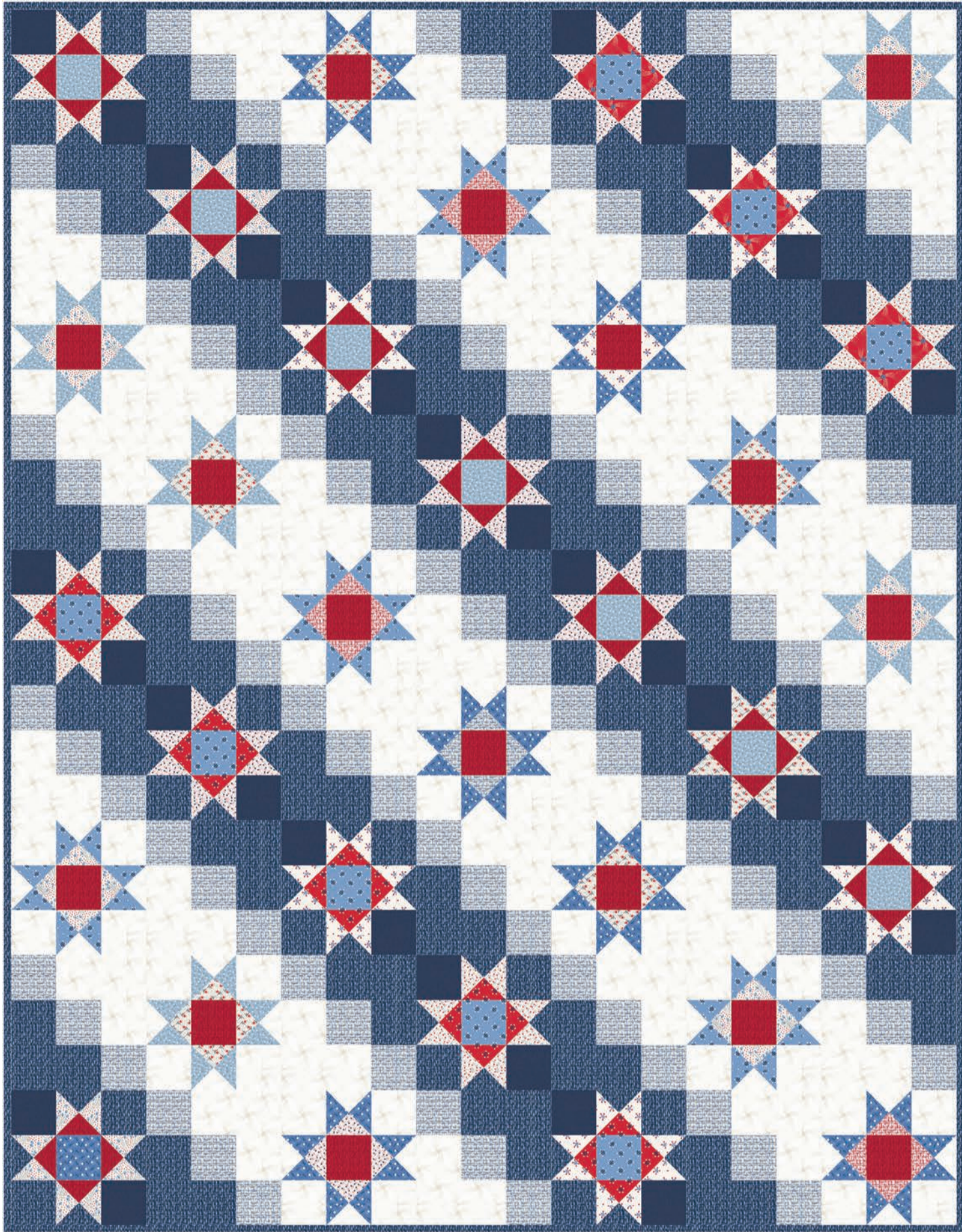
FABRIC	1 KIT	6 KITS
FROM EACH	⅝ yd	3¾ yds
10651-B 10651-LB 10652-B 10654-B 10655-B 10656-B 10657-B		
10652-LB	1 yd	6 yds
10655-R	2 yds	12 yds
10654-L	6 yds	36 yds
10653-B (Binding)	⅝ yd	3¾ yds
10657-L (Backing)	4½ yds	27 yds



1-800-537-1060
 www.checkerdist.com
 custservice@checkerdist.com



Red White and Blue by Andover Fabrics



Justice

Quilt Design: **Krisanne Watkins of Quail Valley Quilts**

Skill Level: **Confident Beginner**

Quilt Size: **63" x 81"**

FABRIC	1 KIT	6 KITS
FROM EACH	fat ¼	1½ yds
10652-LR 10653-B 10653-L 10654-R 10655-L 10656-B 10656-R 10657-L 10657-R		
FROM EACH	½ yd	3 yds
10652-R 10657-B *CS-10-NAVY		
FROM EACH	1¼ yds	7½ yds
10651-LB 10652-LB		
10654-L	2¼ yds	13½ yds
10652-B	2⅞ yds	17¼ yds
(Includes ⅝ yd Binding)		
10656-L	5½ yds	33 yds
(Includes 5¼ yds Backing)		

*From Century Solids by Andover Fabrics



quailvalleyquilts@gmail.com
www.quailvalleyquilts.com



Patterns purchased from a distributor may not have these featured fabrics.
For covers featuring fabrics pictured here, order patterns directly from the designer.

Refer to storyboards for color accuracy.



Stripes Tote

Quilt Design: **Andover Design Team**

Skill Level: **Confident Beginner**

Quilt Size: **16" x 14" x 5"**

Free pattern available at andoverfabrics.com

FABRIC	1 KIT	6 KITS
2S-REDWB-40	1 roll	6 rolls
FROM EACH	¼ yd	1½ yds
10652-B 10655-R		
10655-L	¾ yd	4 yds

Patriotic Colors

Quilt Design: **Andover Design Team**

Skill Level: **Confident Beginner**

Quilt Size: **45¼" x 56½"**

Free pattern available at andoverfabrics.com

FABRIC	1 KIT	6 KITS
FROM EACH	fat ¼	1½ yds
10651-B 10651-LB 10651-R		10652-B 10652-R
10653-B 10653-L 10653-R		10654-R 10655-R
10656-B 10657-B 10657-R		
10656-R	½ yd	2 yds
10655-L	½ yd	3 yds
10655-B	¾ yd	4½ yds
10654-L	1 yd	6 yds
10652-LR	¾ yd	4½ yds
(Includes ½ yd Binding)		
10654-B	3¼ yds	19½ yds
(Includes 3 yds Backing)		



Red White and Blue by Andover Fabrics



Prints below are not to scale. See interior pages for full-scale images.



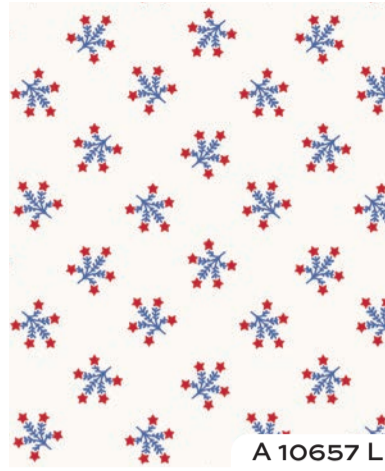
A 10652 L



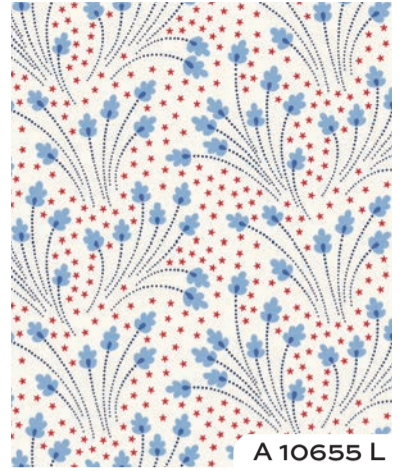
A 10654 L



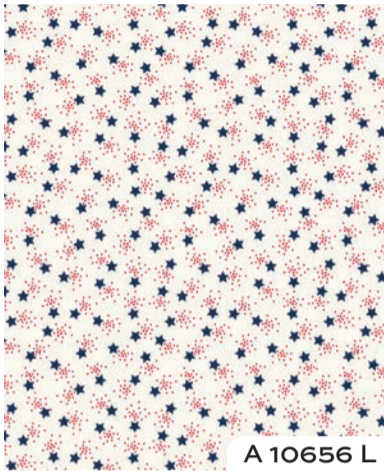
A 10651 L



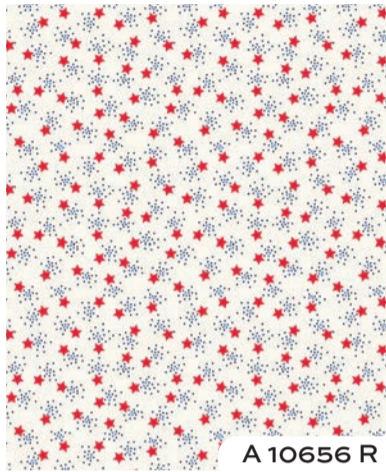
A 10657 L



A 10655 L



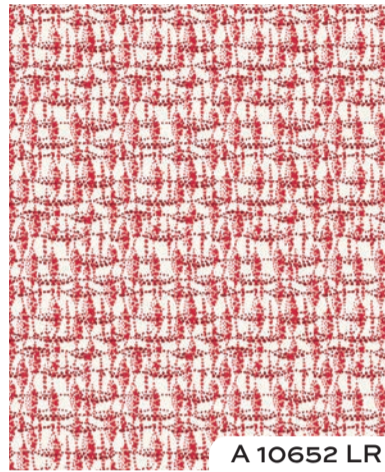
A 10656 L



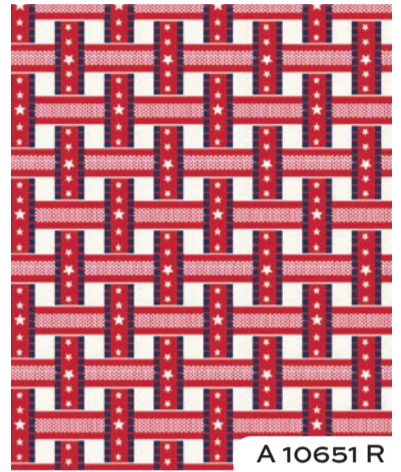
A 10656 R



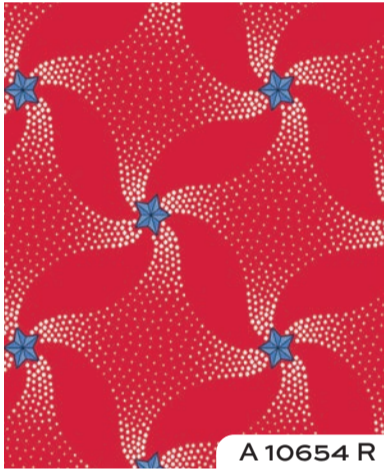
A 10653 L



A 10652 LR



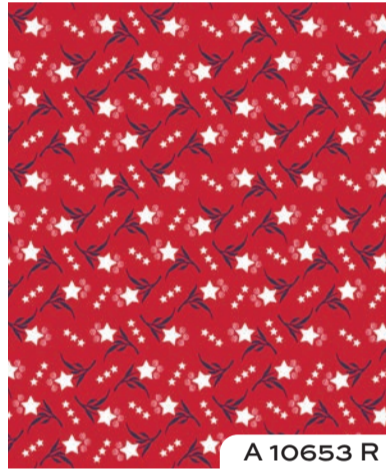
A 10651 R



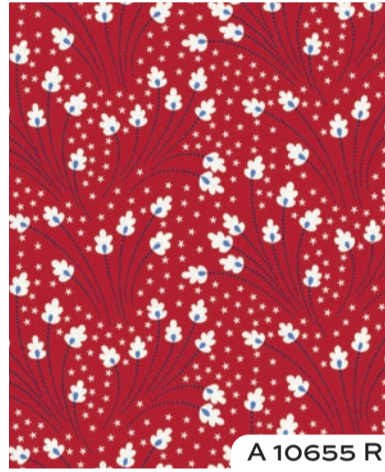
A 10654 R



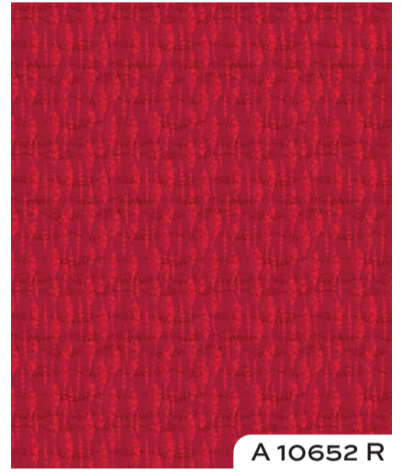
A 10657 R



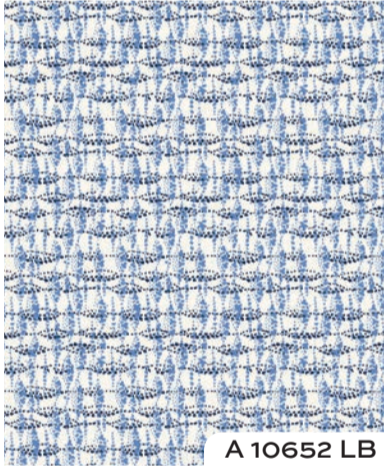
A 10653 R



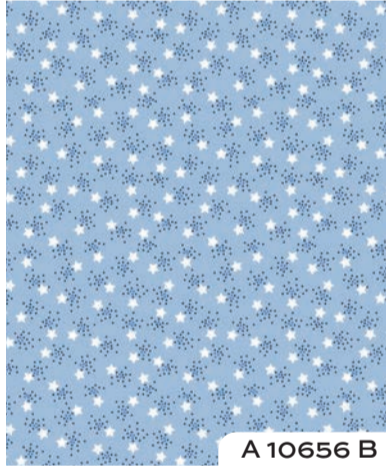
A 10655 R



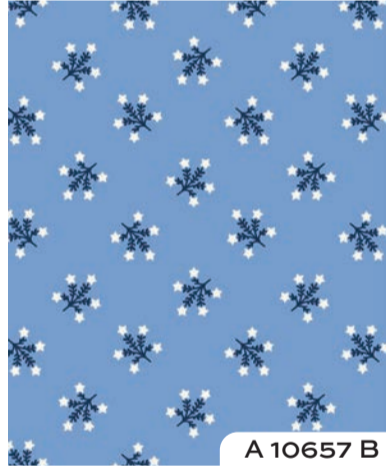
A 10652 R



A 10652 LB



A 10656 B



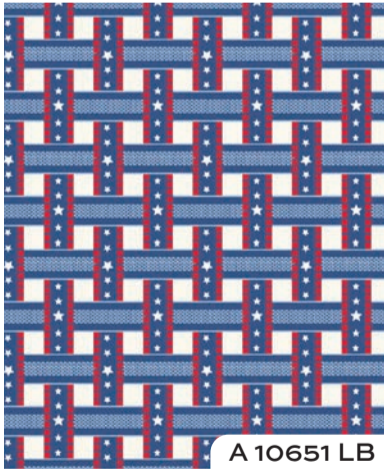
A 10657 B



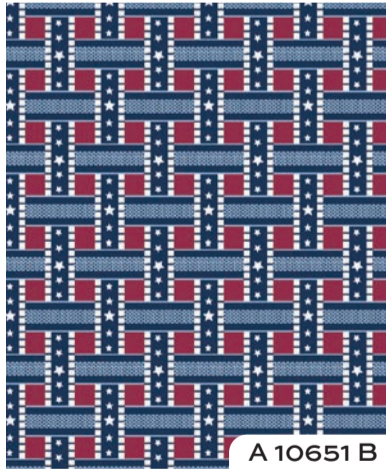
A 10653 B



A 10652 B



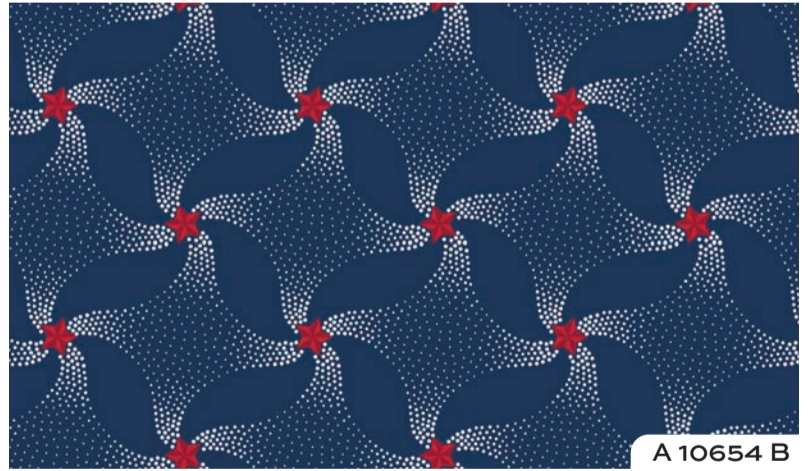
A 10651 LB



A 10651 B



A 10655 B



A 10654 B

PRECUTS



MOQ: 12



MOQ: 4



MOQ: 4



MOQ: 4



10 yds



15 yds

5-REDWB-42

Red White and Blue - 5 Inch Square - 42 Cuts Each



1 99716 03388 1

2S-REDWB-40

Red White and Blue - 2.5 Inch Strip Roll - 40 Cuts Each



1 99716 03387 4

10-REDWB-42

Red White and Blue - 10 Inch Square - 42 Cuts Each



1 99716 03386 7

FQ-REDWB-24

Red White and Blue - Fat Quarter Bundle - 24 Cuts Each



1 99716 03415 4

CP10-REDWB-24

Red White and Blue - 10 Yard Bolt Case Pack - 24 Bolts Each



1 99716 03413 0

CP15-REDWB-24

Red White and Blue - 15 Yard Bolt Case Pack - 24 Bolts Each



1 99716 03414 7

Ships February 2027 • Order by October 2026



makover.uk
Concord Fabrics, UK, Ltd



@andoverfabrics
#AlwaysAndover



1384 Broadway, 24th Floor, New York, NY 10018
Tel. (800) 223-5678 • andoverfabrics.com