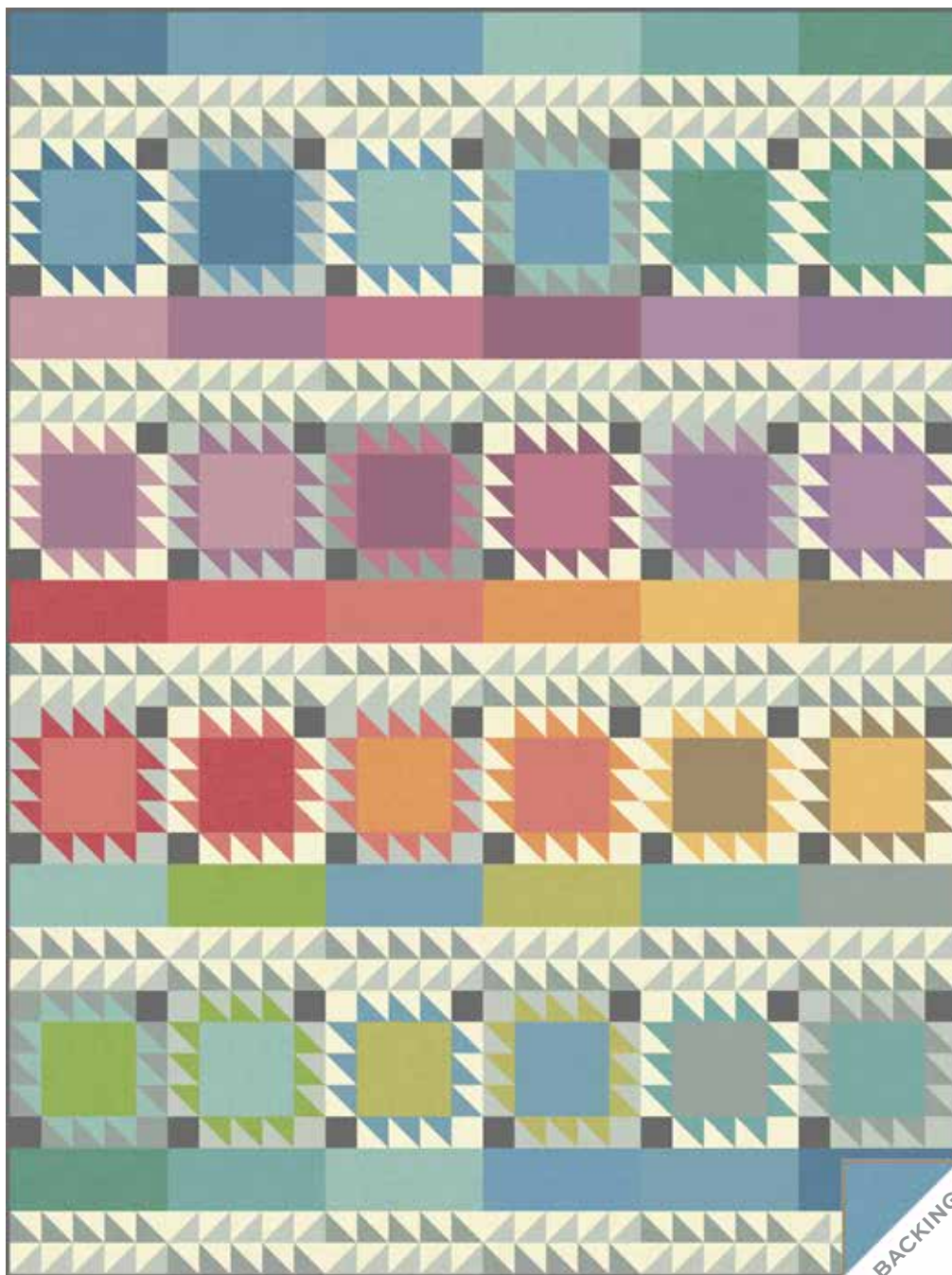


Cottage Cloth II

RENÉE NANNEMAN



Artisan Cottage Blanket Quilt designed by: **Renée Nanneman**

Quilt Size: **60" x 80"** • Skill Level: **Experienced Beginner**

Artisan Cottage Blanket Quilt

Introducing Andover Fabrics new collection: **Cottage Cloth II** by Renée Nanneman

Quilt designed by Renée Nanneman

Quilt finishes 60" x 80"

24 Blocks: 10" x 10"

A rich jewel-toned palette makes this a winning combination. Attention to fabric placement will result in the intriguing color shifts. Easy to piece, you will be finished with this beauty in no time.

Cutting Directions

Note: Read assembly directions before cutting patches. All measurements are cut sizes and include ¼" seam allowances. A fat ¼ is an 18" x 20"-22" cut. WOF designates the width of fabric from selvedge (approximately 42" wide).

Cutting for One Block:

Fabric 1: Cut (1) 6½" center square

Fabric 2: Cut (6) squares 3" or 2⅞" for HST
(Read Step 1 first.)

Fabric 3: Cut (6) squares 3" or 2⅞" for HST
(D, J, or E) Cut (2) corner squares 2½"

Fabric C: Cut (2) corner squares 2½"

Cutting for Quilt:

3 Fat ¼ From each:

Cut (1) square 6½"

Cut (2) rectangles 4½" x 10½"

Cut (6) squares 3" (or 2⅞") for HST
(Read Step 1 before cutting.)

14 Fat ¼ From each:

Cut (1) square 6½"

Cut (1) rectangle 4½" x 10½"

Cut (6) squares 3" (or 2⅞")

3 Brights From each:

Cut (2) squares 6½"

Cut (3) rectangles 4½" x 10½"

Cut (12) squares 3" (or 2⅞")

Fabric C

Cut (48) squares 2½"

Fabric D

Cut (1) square 6½"

Cut (1) rectangle 4½" x 10½"

Cut (99) squares 3" (or 2⅞")

Cut (6) squares 2½"

Fabric E

Cut (123) squares 3" (or 2⅞")

Cut (16) squares 2½"

Fabric J

Cut (228) squares 3" (or 2⅞")

Cut (26) squares 2½"

Binding

Cut (8) strips 2½" x WOF for binding

Backing

Cut (2) lengths 35" x 90", pieced to fit quilt top with overlap on all sides

Note: The alphabet labels refer to the labels on the Quilt Assembly and the fabric thumbnail sheet on page 5.

Fabric Requirements	Yardage	Fabric
3 Fat ¼	set	fat ¼ each
	A, B, H	
14 Fat ¼	set	fat ¼ each
	F, G, I, K, L, M, N, O, P, Q, R, S, W, X	
3 Brights	set	⅔ yard each
	T, U, V	
Fabric C	set	fat ¼
Fabric D	set	1 yard
Fabric E	set	1 yard
Fabric J	set	2 yards
Binding	⅝ yard	C2
Backing	5 yards	B2

Artisan Cottage Blanket Quilt

Making the Quilt

1. Refer to the Quilt Assembly for fabric combinations and placement. The blocks and sashes are made with half-square triangles (HST). Use your favorite method to make HST that finish 2", or follow these directions. Fabric squares cut 3" will be trimmed after stitching. Cut the squares 2 $\frac{7}{8}$ " if you do not wish to trim later. Draw a diagonal line on the wrong side of a light (D, E, or J) 3" square. With right sides together, position the marked square on top of a bright square. Stitch $\frac{1}{4}$ " on each side of the diagonal line (Diagram 1). Cut apart on the drawn line. Press the seam allowance toward the darker fabric. Trim the squares to 2 $\frac{1}{2}$ " if needed. Make 12 HST in the colors needed for each block.
2. Block: Arrange 12 HST, the 6 $\frac{1}{2}$ " center square, and the corner squares to make each block. Notice that every block has 2 Fabric C patches in opposite corners. Make 24 blocks.
3. Sash Unit: Referring to Step 1, make 150 HST with Fabrics J and E, and 150 HST with Fabrics J and D (Diagram 2). Join 5 HST made with J and D to make a row, paying attention to the orientation of the seams. Join 5 HST made with J and E to make a second row, again noting that the orientation of the seams is different. Join the 2 rows to make a Sash Unit A. Make 15. Likewise, join HST to make 15 Sash Unit B.
4. On a design wall or large flat surface, position the blocks, sashes, and 4 $\frac{1}{2}$ " x 10 $\frac{1}{2}$ " rectangles into horizontal rows as shown in the Quilt Assembly. Stand back and compare your quilt with the quilt photograph. Once you are satisfied with the design, join the parts into rows, and then join the rows.

Finishing the Quilt

5. Layer the quilt with batting and backing and baste. Quilt in the ditch around patches. Quilt the center squares in blocks as desired. Bind to finish the quilt.

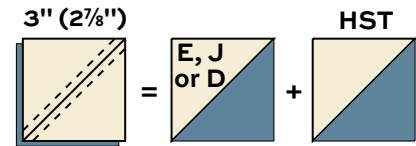
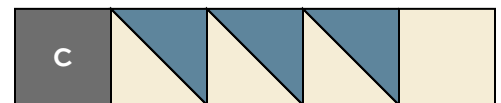
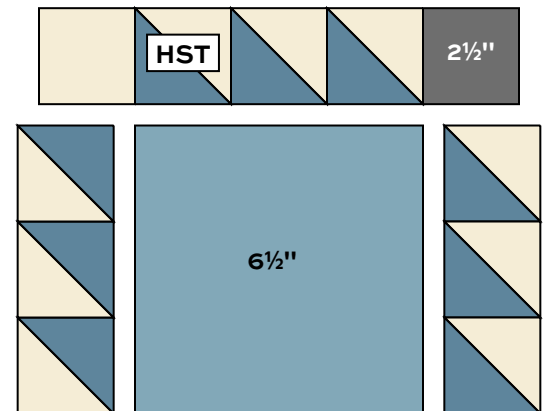


Diagram 1 – Make 12 per block



Block – Make 24

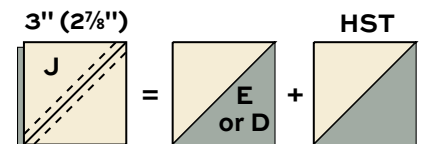
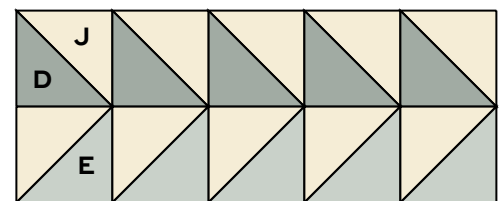
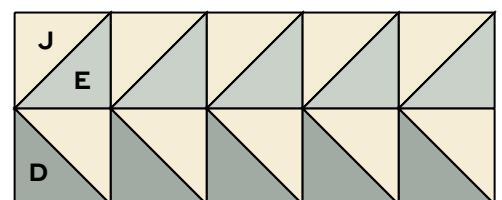


Diagram 2
Make 150 with J & E
Make 150 with J & D

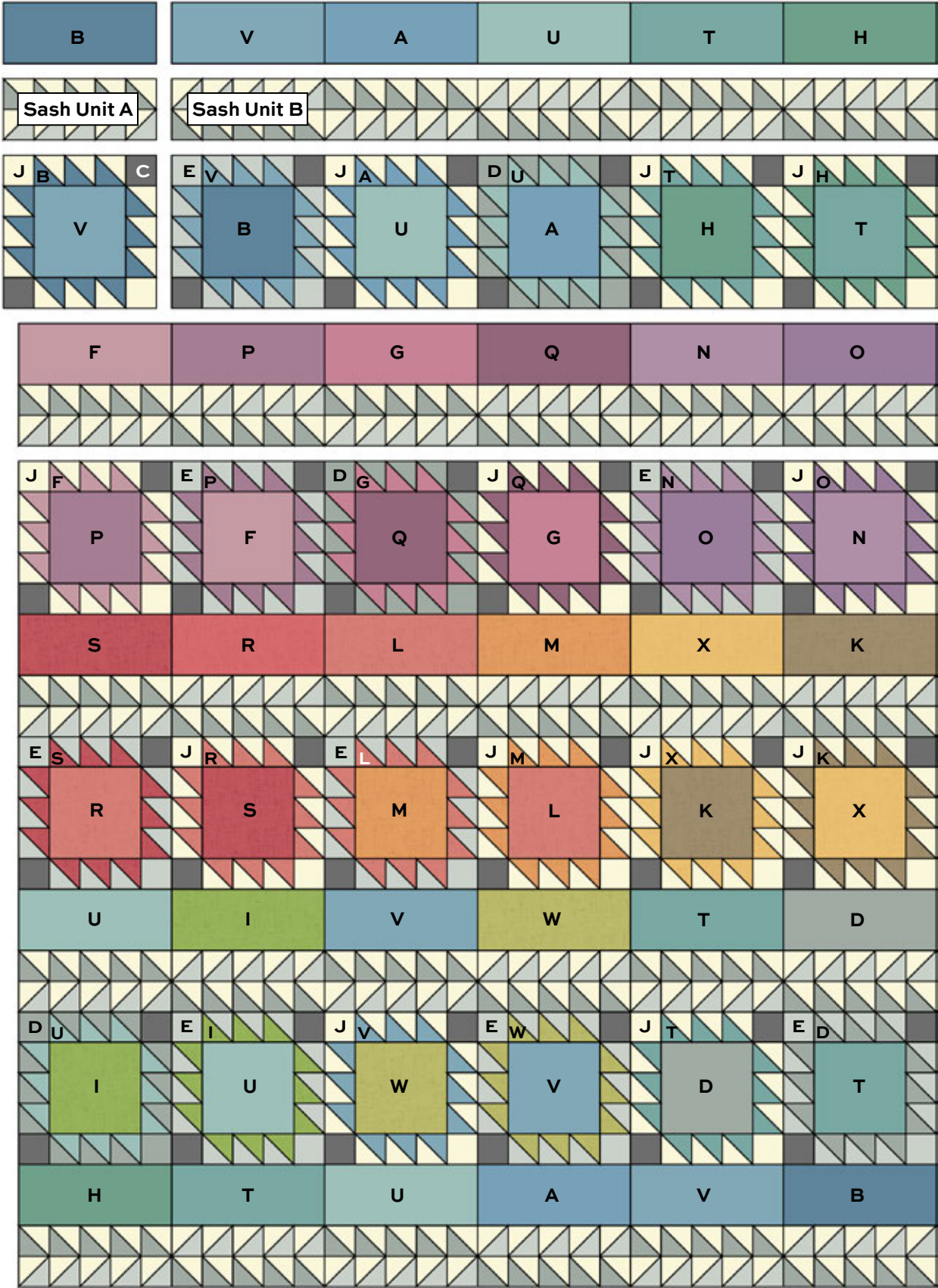


Sash Unit A – Make 15



Sash Unit B – Make 15

Artisan Cottage Blanket Quilt



Quilt Assembly

Cottage Cloth II

RENÉE NANNEMAN



All fabrics are used in quilt pattern. Fabrics shown are 100% of actual size.