

# ALWAYS ANDOVER PROJECTS



+



+



=



**Country Corner** Quilt designed by: **Andover Design Team**

Quilt Size: **60 1/2" x 69 1/2"** • Skill Level: **Confident Beginner**

# Country Corner



Featuring Makower UK's new collection: Smallholding  
Quilt designed by Andover Design Team

Quilt finished 60 1/2" x 69 1/2"

## Quilt Cutting Directions

**Note: Read assembly directions before cutting patches.** Borders are cut to exact length required plus 1/4" seam allowance. WOF designates the width of fabric from selvedge to selvedge (approximately 42" wide).

- Fabric A** Fussy cut (1) 34 1/2" x 42 1/2" rectangle centered on the panel.
- Fabric B** Pull (4) matching 5" squares for corners  
Cut (128) 2" x 5" strips.
- Fabric C** Cut (2) 2" x 42 1/2" WOF strips, piece as needed.  
Cut (2) 2" x 37 1/2" strips.
- Fabric D** Cut (3) 2 1/2" x WOF strips. Sew the strips together end to end with diagonal seams and cut (2) 2 1/2" x 44 1/2" strips.  
Cut (2) 2 1/2" x 40 1/2" WOF strips.
- Fabric E** Cut (3) 2 3/4" x WOF strips. Sew the strips together end to end with diagonal seams and cut (2) 2 3/4" x 44" strips.  
Cut (3) 2 1/4" x WOF strips. Sew the strips together end to end with diagonal seams and cut (2) 2 1/4" x 48 1/2" strips.
- Fabric F** Cut (2) 4 1/2" x 62" LOF strips.  
From the remaining fabric cut (2) 4 1/2" x 61" WOF strips, piece as needed.
- Binding** Cut (7) 2 1/2" x WOF strips.
- Backing** Cut (2) 78" x WOF strips. Sew the strips together and trim to make (1) 69" x 78" backing.

## Fabric Requirements

Quilt	Yardage	Fabric
<b>Fabric A</b> quilt center	1 panel	293-1
<b>Fabric B</b> borders	(2) 5" square packs*	5-SMALL-42
<b>Fabric C</b> borders	1/2 yard	291-S
<b>Fabric D</b> borders	1/2 yard	290-B
<b>Fabric E</b> borders	1/2 yard	291-Q
<b>Fabric F</b> borders	1 7/8 yards	288-Q
<b>Binding</b>	5/8 yard	291-S
<b>Backing</b>	4 1/2 yards	288-B

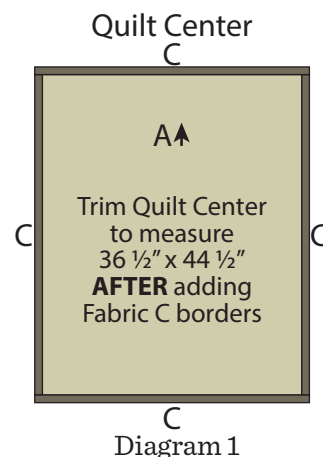
\* (1) 5" square pack contains (42) 5" squares.

## Making the Quilt

**Note: The arrows represent the fabric print direction. Pay attention to the fabric and unit orientations when assembling the various components.**

### Block Assembly

1. Sew (1) 2" x 42 1/2" Fabric C strip to each side of the 34 1/2" x 42 1/2" Fabric A rectangle. Sew (1) 2" x 37 1/2" Fabric C strip to the top and bottom of the Fabric A rectangle to make the Quilt Center (Diagram 1).  
**Trim the block to measure 36 1/2" x 44 1/2".**



# Country Corner

- Sew together (35) assorted 2" x 5" Fabric B strips lengthwise as shown to make (1) 5" x 53" Side Border (Diagram 2). Repeat to make a second Side Border.

Side Border  
make 2

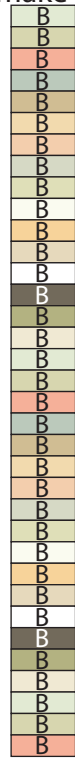


Diagram 2

- Sew together (29) assorted 2" x 5" Fabric B strips lengthwise as shown. Sew (1) matching 5" Fabric B square to each end of the newly sewn strip to make the 5" x 53" Top Border (Diagram 3). Repeat to make the Bottom Border.

Top/Bottom Border  
make 2



Diagram 3

## Quilt Top Assembly

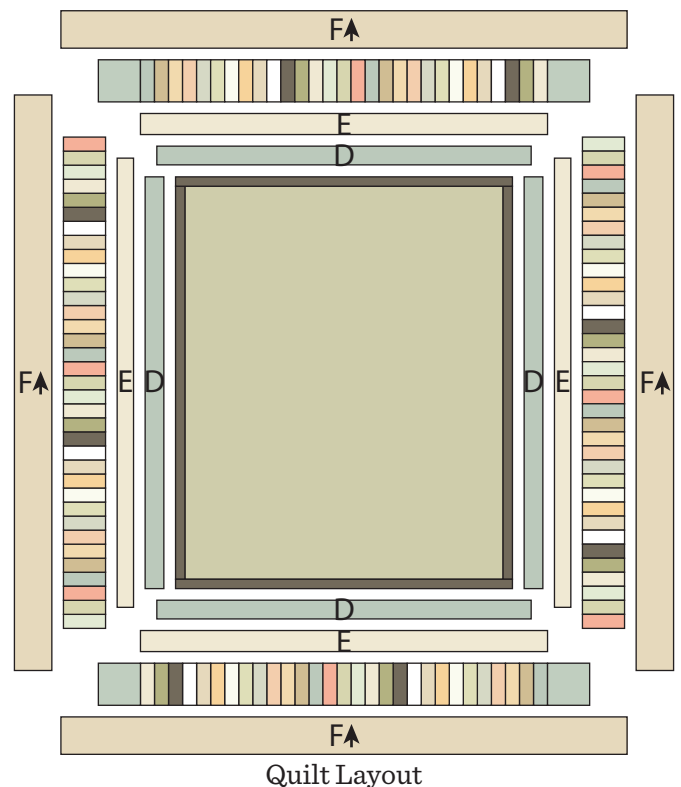
*(Refer to the Quilt Layout when assembling the quilt top.)*

- Sew (1) 2 1/2" x 44 1/2" Fabric D strip to each side of the Quilt Center. Sew (1) 2 1/2" x 40 1/2" Fabric D strip to the top and bottom of the Quilt Center.
- Sew (1) 2 1/4" x 48 1/2" Fabric E strip to each side of the Quilt Center. Sew (1) 2 3/4" x 44" Fabric E strip to the top and bottom of the Quilt Center.
- Sew (1) Side Border to each side of the Quilt Center. Sew the Top Border and Bottom Border to the top and bottom of the Quilt Center.

- Sew (1) 4 1/2" x 62" Fabric F strip to each side of the Quilt Center. Sew (1) 4 1/2" x 61" Fabric F strip to the top and bottom of the Quilt Center to make the Quilt Top.

## Finishing the Quilt

- Layer and quilt as desired.
- Sew together the (7) binding strips end to end with 45-degree seams. Fold this long strip in half lengthwise with wrong sides together and press.
- Bind as desired.



Quilt Layout

# Smallholding

MAKOWER UK



Note: You will need (2) 5" square packs of (42) squares each in addition to the yardages listed below.



285-Q



287-G



287-Q



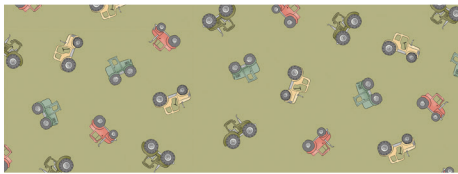
288-B  
(backing)

4 1/2 yds

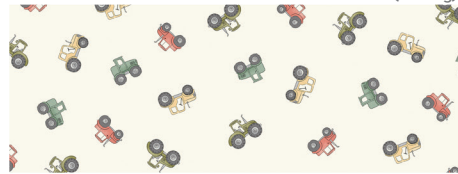


288-Q

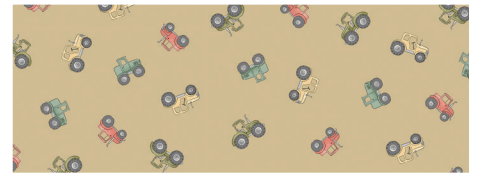
1 7/8 yds



289-G



289-Q



289-V



290-B

1/2 yd



290-P



290-Y



291-G



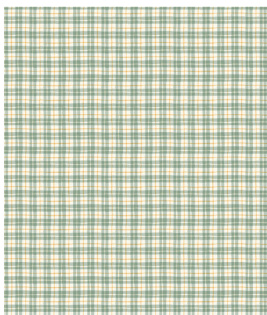
291-Q

1/2 yd

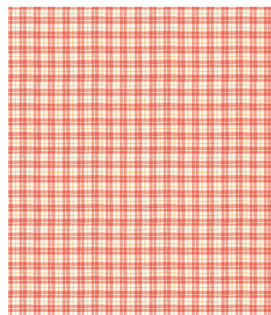


291-S  
(includes binding)

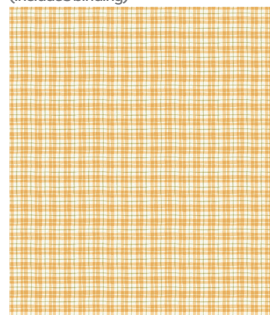
1 1/8 yds



292-B



292-R



292-Y



293-1

1 panel

Bolts needed to cut project kits: 15 yds = 1 bolt

andover : [makower.uk](http://makower.uk)

Free Pattern Download Available

1384 Broadway New York, NY 10018  
Tel. (800) 223-5678 • [andoverfabrics.com](http://andoverfabrics.com)