

ALWAYS ANDOVER PROJECTS



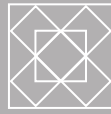
+



+



=



Patriotic Colors Quilt designed by: **Andover Design Team**

Quilt Size: **45 1/4" x 56 1/2"** • Skill Level: **Confident Beginner**

Patriotic Colors



Featuring Andover Fabrics new collection: Red White and Blue

Quilt designed by Andover Design Team

Quilt finished 45 1/4" x 56 1/2"

Quilt Cutting Directions

Note: Read assembly directions before cutting patches. Borders are cut to exact length required plus 1/4" seam allowance. WOF designates the width of fabric from selvedge to selvedge (approximately 42" wide).

Fabric A Cut (8) 3 1/2" squares.

Fabric B Cut (8) 3 1/2" squares.

Fabric C Cut (12) 3 1/2" squares.

Fabric D Cut (8) 3 1/2" squares.

Fabric E Cut (12) 3 1/2" squares.

Fabric F Cut (8) 3 1/2" squares.

Fabric G Cut (8) 3 1/2" squares.

Fabric H Cut (8) 3 1/2" squares.

Fabric I Cut (8) 3 1/2" squares.

Fabric J Cut (8) 3 1/2" squares.

Fabric K Cut (2) 1 1/2" x WOF strips. Sew the strips together end to end with diagonal seams and cut (1) 1 1/2" x 65 1/2" strips.
Cut (3) 1 1/2" x WOF strips. Sew the strips together end to end with diagonal seams and cut (2) 1 1/2" x 57 1/2" strips.
Cut (2) 1 1/2" x 41 1/2" WOF strips.
Cut (2) 1 1/2" x 25 1/2" WOF strips.
Cut (1) 1 1/2" x WOF strip. Sub-cut the strip into (2) 1 1/2" x 9 1/2" strips.
Cut (8) 1 1/2" x WOF strips. Sub-cut the strips into (40) 1 1/2" x 7 1/2" strips.

Fabric L Cut (12) 3 1/2" squares.

Fabric M Cut (2) 11 1/4" x WOF strips. Sub-cut the strips into (4) 11 1/4" squares. Cut the squares across both diagonals to make

Fabric Requirements

| Quilt | Yardage | Fabric |
|-----------------------------------|----------|----------|
| Fabric A blocks | Fat 1/4 | 10651-B |
| Fabric B blocks | Fat 1/4 | 10651-LB |
| Fabric C blocks | Fat 1/4 | 10651-R |
| Fabric D blocks | Fat 1/4 | 10652-B |
| Fabric E blocks | Fat 1/4 | 10652-LR |
| Fabric F blocks | Fat 1/4 | 10652-R |
| Fabric G blocks | Fat 1/4 | 10653-B |
| Fabric H blocks | Fat 1/4 | 10653-L |
| Fabric I blocks | Fat 1/4 | 10653-R |
| Fabric J blocks | Fat 1/4 | 10654-B |
| Fabric K sashing | 1 yard | 10654-L |
| Fabric L blocks | Fat 1/4 | 10654-R |
| Fabric M setting triangles | 3/4 yard | 10655-B |
| Fabric N blocks | 1/2 yard | 10655-L |
| Fabric O blocks | Fat 1/4 | 10655-R |
| Fabric P blocks | Fat 1/4 | 10656-B |
| Fabric Q blocks | 1/3 yard | 10656-R |
| Fabric R corner triangles | Fat 1/4 | 10657-B |
| Fabric S blocks | Fat 1/4 | 10657-R |
| Binding | 1/2 yard | 10652-LR |
| Backing | 3 yards | 10654-B |

(16) 11 1/4" triangles. *Note: You will only use (14) 11 1/4" triangles.*

Fabric N Cut (4) 1 1/2" x WOF strips. Sub-cut the strips into (20) 1 1/2" x 7 1/2" strips.
Cut (4) 1 1/2" x WOF strips. Sub-cut the strips into (40) 1 1/2" x 3 1/2" strips.

Fabric O Cut (8) 3 1/2" squares.

Fabric P Cut (8) 3 1/2" squares.

Fabric Q Cut (3) 1 1/2" x WOF strips. Sub-cut the strips into (12) 1 1/2" x 7 1/2" strips.
Cut (2) 1 1/2" x WOF strips. Sub-cut the strips into (24) 1 1/2" x 3 1/2" strips.

Fabric R Cut (1) 5 7/8" x WOF strip. Sub-cut the strip into (2) 5 7/8" squares. Cut the squares across (1) diagonal to make (4) 5 7/8" triangles.

Patriotic Colors

Quilt Cutting Directions - Continued

- Fabric S** Cut (12) 3 1/2" squares.
- Binding** Cut (6) 2 1/2" x WOF strips.
- Backing** Cut (2) 54" x WOF strips. Sew the strips together and trim to make (1) 54" x 65" backing.

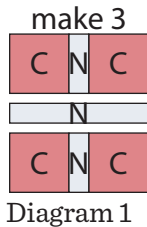
Making the Quilt

Note: Pay attention to the unit orientations when assembling the various components.

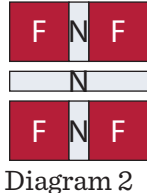
Block Assembly

- Sew (1) 3 1/2" Fabric C square to each side of (1) 1 1/2" x 3 1/2" Fabric N strip. Repeat to make a second strip. Sew (1) newly sewn strip to the top and bottom of (1) 1 1/2" x 7 1/2" Fabric N strip to make (1) 7 1/2" Block One square (Diagram 1). Repeat to make an additional (2) Block One squares.
- Repeat Step 1 and refer to Diagrams 2-14 for fabric identification and placement to make the designated number of squares for Block Two through Block Fourteen.

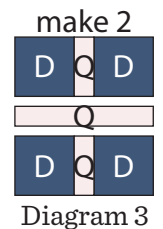
Block One



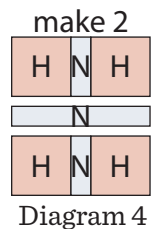
Block Two



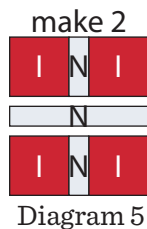
Block Three



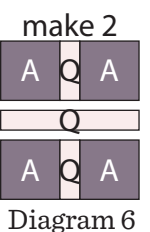
Block Four



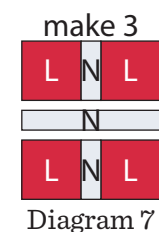
Block Five



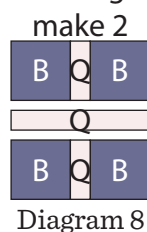
Block Six



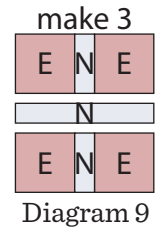
Block Seven



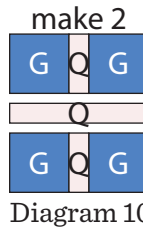
Block Eight



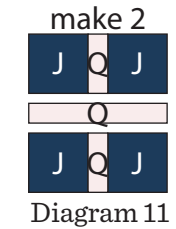
Block Nine



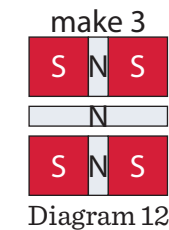
Block Ten



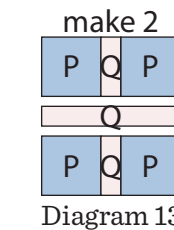
Block Eleven



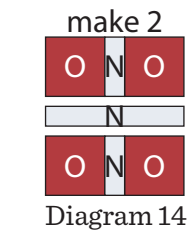
Block Twelve



Block Thirteen



Block Fourteen



Note: For Quilt Center assembly (Steps 3-6), please refer to Diagram 15 on Page 4.

- Sew (1) Fabric R triangle to the top of (1) 1 1/2" x 9 1/2" Fabric K strip to make Row One (Diagram 15). Repeat to make Row Ten.
- Sew together (1) 11 1/4" Fabric M triangle, (1) 1 1/2" x 7 1/2" Fabric K strip, (1) Block One square, (1) 1 1/2" x 7 1/2" Fabric K strip and (1) 11 1/4" Fabric M triangle, in that order from left to right, to make Row Two (Diagram 15).
- Repeat Step 4 and refer to the Diagram 15 for component identification and placement to make Row Three through Row Nine.
- Sew together Row One, Row Two, (1) 1 1/2" x 25 1/2" Fabric K strip, Row Three, (1) 1 1/2" x 41 1/2" Fabric K strip, Row Four, (1) 1 1/2" x 57 1/2" Fabric K strip, Row Five, (1) 1 1/2" x 65 1/2" Fabric K strip, Row Six, (1) 1 1/2" x 57 1/2" Fabric K strip, Row Seven, (1) 1 1/2" x 41 1/2" Fabric K strip, Row Eight, (1) 1 1/2" x 25 1/2" Fabric K strip, Row Nine and Row Ten, in that order from top to bottom, to make the Quilt Center (Diagram 15).

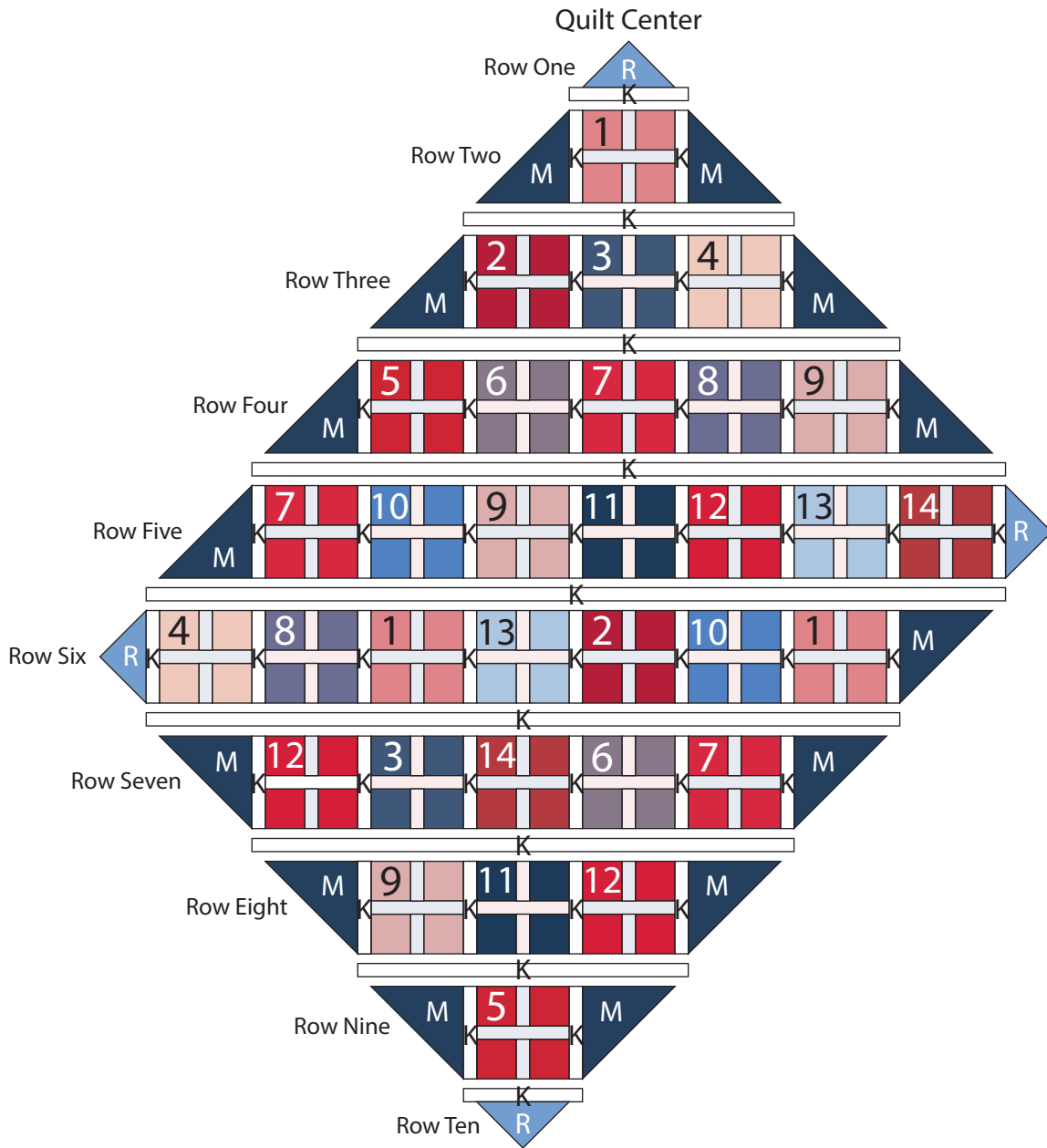


Diagram 15

Patriotic Colors

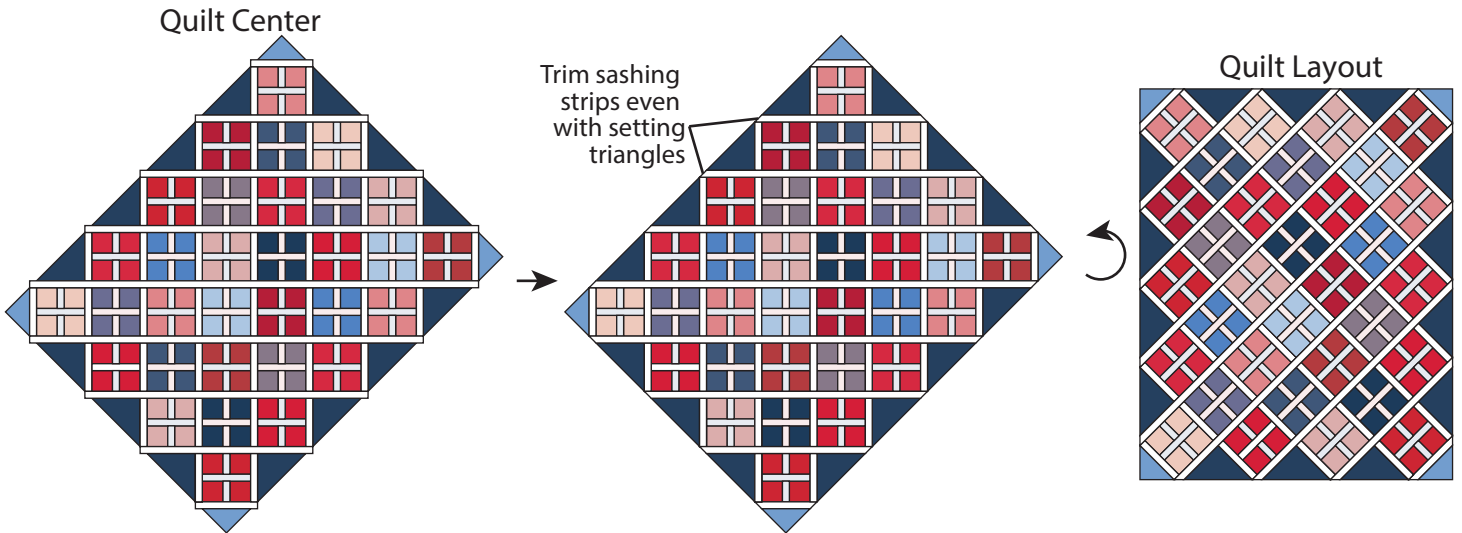
Quilt Top Assembly

(Refer to the Quilt Layout when assembling the quilt top.)

7. Trim the sashing strips even with the side setting triangles to finish the Quilt Top.

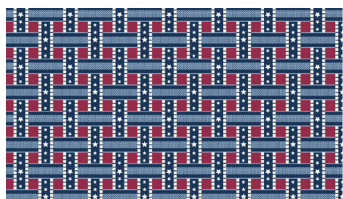
Finishing the Quilt

8. Layer and quilt as desired.
9. Sew together the (5) binding strips end to end with 45-degree seams. Fold this long strip in half lengthwise with wrong sides together and press.
10. Bind as desired.

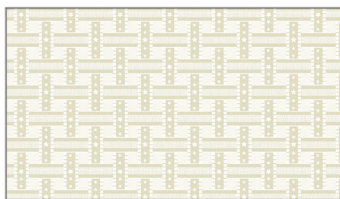


Red White and Blue

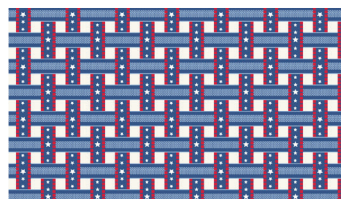
ANDOVER FABRICS



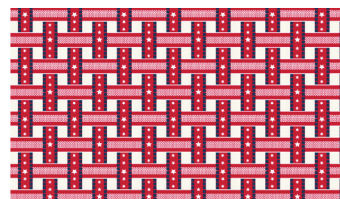
10651-B Fat 1/4



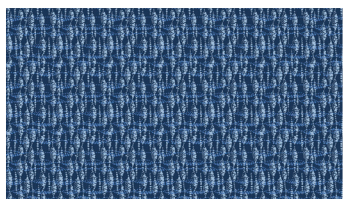
10651-L



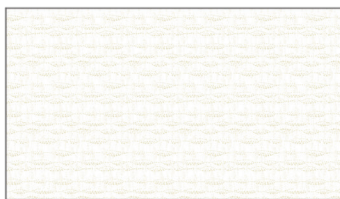
10651-LB Fat 1/4



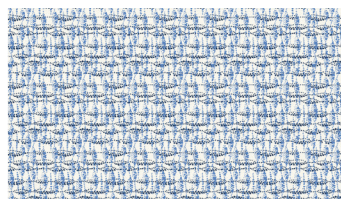
10651-R Fat 1/4



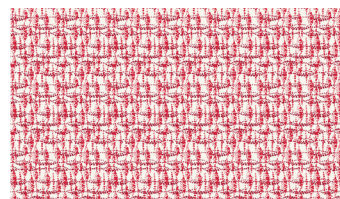
10652-B Fat 1/4



10652-L



10652-LB

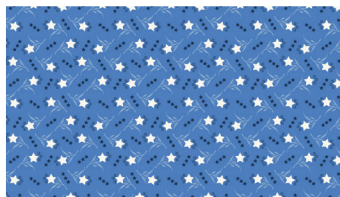


10652-LR Fat 1/4 + 1/2 yd

(includes binding)



10652-R Fat 1/4



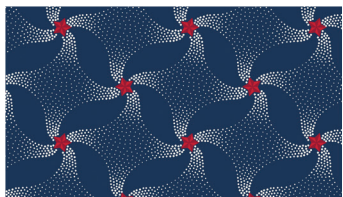
10653-B Fat 1/4



10653-L Fat 1/4



10653-R Fat 1/4

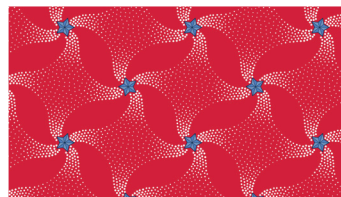


10654-B Fat 1/4 + 3 yds

(includes backing)



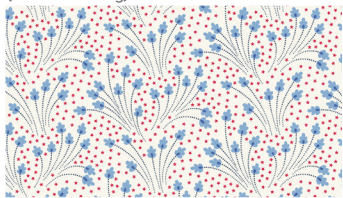
10654-L 1 yd



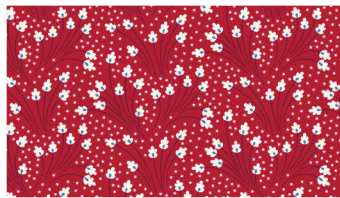
10654-R Fat 1/4



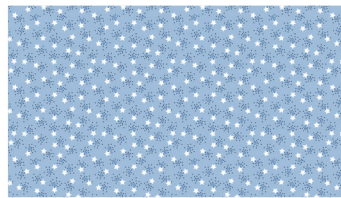
10655-B 3/4 yd



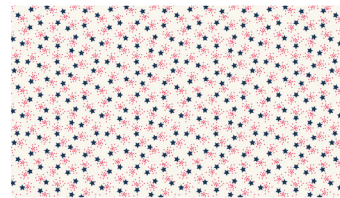
10655-L 1/2 yd



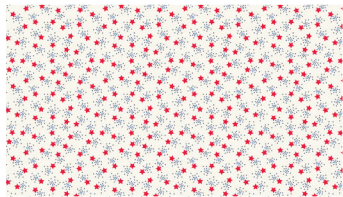
10655-R Fat 1/4



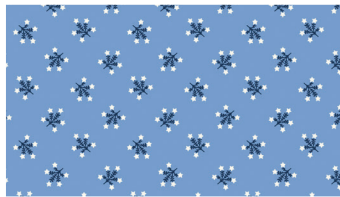
10656-B Fat 1/4



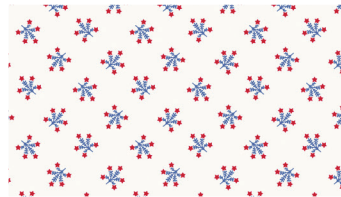
10656-L



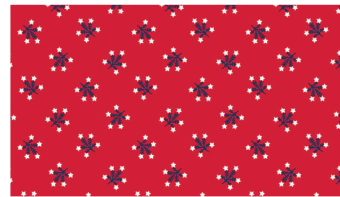
10656-R 1/3 yd



10657-B Fat 1/4



10657-L



10657-R Fat 1/4

Bolts needed to cut project kits: 15 yds = 1 bolt

Fabrics shown are 25% of actual size.