

ALWAYS ANDOVER PROJECTS



Prairie Life Quilt designed by: **Andover Design Team**
Quilt Size: **63" x 75"** • Skill Level: **Intermediate**

LITTLE HOUSE ON THE PRAIRIE® and associated character names, designs, images and logos are trademarks or registered trademarks owned and licensed by Friendly Family Productions, LLC. ©2027 Friendly Family Productions, LLC. All rights reserved.

AndoverFabrics.com @AndoverFabrics #AlwaysAndover ©2026 Andover Fabrics. Free pattern for educational purposes only.

Prairie Life



Featuring Andover Fabrics new collection: Plum Creek by Little House on the Prairie®

Quilt designed by Andover Design Team

Quilt finished 63" x 75"

Quilt Cutting Directions

Note: Read assembly directions before cutting patches. Fabrics are cut to exact length required plus ¼" seam allowance. WOF designates the width of fabric from selvedge to selvedge (approximately 42" wide).

- Fabric A** Cut (2) 4 ½" x WOF strips. Sub-cut the strips into (18) 4 ½" squares. See instructions to cut (1) Bow.
- Fabric B** Cut (5) 1 ½" x WOF strips. Sub-cut the strips into (36) 1 ½" x 4 ½" strips. See instructions to cut (1 set) Sleeve & (1) Cuff.
- Fabric C** Cut (6) 1 ½" x WOF strips. Sub-cut the strips into (36) 1 ½" x 6 ½" strips.
- Fabric D** Cut (9) 1 ½" x WOF strips. Sub-cut the strips into (36) 1 ½" x 8 ½" strips.
- Fabric E** Cut (12) 1 ½" x WOF strips. Sub-cut the strips into (36) 1 ½" x 10 ½" strips.
- Fabric F** Cut (6) 1 ½" x WOF strips. Sub-cut the strips into (36) 1 ½" x 6 ½" strips. See instructions to cut (1) Under Skirt.
- Fabric G** Cut (9) 1 ½" x WOF strips. Sub-cut the strips into (36) 1 ½" x 8 ½" strips. See instructions to cut (1) Dress.
- Fabric H** Cut (12) 1 ½" x WOF strips. Sub-cut the strips into (36) 1 ½" x 10 ½" strips.
Cut (1) 17 ½" x 28" WOF strip for Sky.
- Fabric I** Cut (12) 1 ½" x WOF strips. Sub-cut the strips into (36) 1 ½" x 12 ½" strips.

Fabric Requirements

Quilt	Yardage	Fabric
Fabric A blocks, applique	½ yard	10686-R
Fabric B blocks	½ yard	10690-T
Fabric C blocks	½ yard	10692-L
Fabric D blocks	½ yard	10690-E
Fabric E blocks	⅔ yard	10687-E
Fabric F blocks, applique	⅔ yard	10687-B
Fabric G blocks, applique	1 yard	10684-B
Fabric H blocks, background	1 ¼ yards	10692-T
Fabric I blocks	⅞ yard	10686-T
Fabric J blocks, applique	1 ¼ yards	10689-N
Fabric K borders	1 ½ yards	10685-R
Fabric L applique	¼ yard	CS-10-Cream*
Fabric M background	1 yard	10694-L**
Fabric N applique	¼ yard	10687-N
Fabric O applique	⅛ yard	10686-N
Fabric P applique	⅛ yard	CS-10-Almond*
Fabric Q applique	⅛ yard	10681-Y
Fabric R applique	¼ yard	10683-R
Fabric S applique	¼ yard	10689-R
Binding	⅝ yard	10686-R
Backing	4 ⅔ yards	10684-N

You will also need: Fusible web

* Century Solids Collection

** Icons Collection

- Fabric J** Cut (4) 2" x WOF strips. Sew the strips together end to end with diagonal seams and cut (2) 2" x 72 ½" strips.
Cut (4) 2" x WOF strips. Sew the strips together end to end with diagonal seams and cut (2) 2" x 63 ½" strips.
Cut (3) 1 ½" x WOF strips. Sew the strips together end to end with diagonal seams and cut (2) 1 ½" x 46 ½" strips.
Cut (2) 1 ½" x 36 ½" WOF strips.
Cut (2) 1 ½" x 38 ½" WOF strips.
Cut (2) 1 ½" x 28 ½" WOF strips.
See instructions to cut (1 set) Boots.
- Fabric K** Fussy cut (2) 3 ½" x 50" Length of Fabric (LOF) strips each centered on same stripes.
Fussy cut (2) 3 ½" x 38" LOF strips each centered on same stripes.

Prairie Life

Quilt Cutting Directions - Continued

- Fabric L** See instructions to cut (1 set) Clouds.
- Fabric M** Cut (1) 24" x 28" WOF strip for Ground.
- Fabric N** See instructions to cut (1 set) Grass.
- Fabric O** See instructions to cut (1 set) Grass.
- Fabric P** See instructions to cut (1 set) Arm & Leg.
- Fabric Q** See instructions to cut (1 set) Braids.
- Fabric R** See instructions to cut (1 set) Bonnet.
- Fabric S** See instructions to cut (1 set) Ties & Inner Bow.
- Binding** Cut (7) 2 1/2" x WOF strips.
- Backing** Cut (2) 83" x WOF strips. Sew the strips together and trim to make (1) 71" x 83" backing.

Making the Quilt

Note: Pay attention to the unit orientations when assembling the various components.

Block Assembly

1. Place the 24" x 28" Fabric M strip on a table right side up. Place the 17 1/2" x 28" Fabric H strip on the table right side up, over-lapping the bottom of the Fabric M strip about 1 1/2" (Diagram 1).

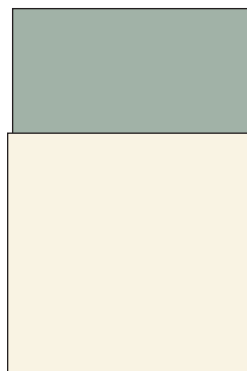


Diagram 1

2. Place pins through both layers of fabric to mark the edges of the bottom and top fabric (Diagram 2).
3. Take a fabric pencil and draw a gentle curved line on the top fabric, staying between the pins.
Note: The curve does not have to be very wavy. The wavier the curve, the harder it is to sew.
4. Cut one the drawn line, through both fabrics (Diagram 3). Un-pin the scraps from the fabric and discard.

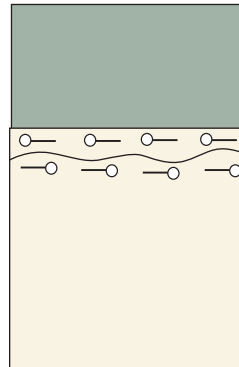


Diagram 2

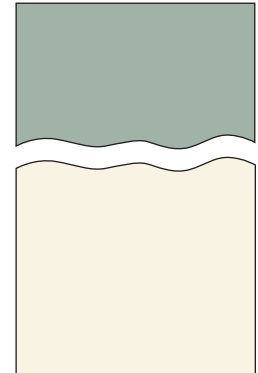


Diagram 3

5. Pick up both pieces of fabric and place them right sides together. **Note: The edges will not line up as they are mirror images of each other (Diagram 4).** Slowly sew them together, easing the curves together as you go to make the Unit 1 background strip (Diagram 5). Trim the Unit 1 strip to measure 26 1/2" x 38 1/2".

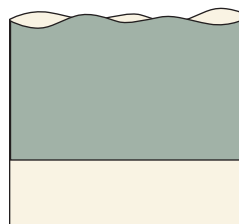


Diagram 4

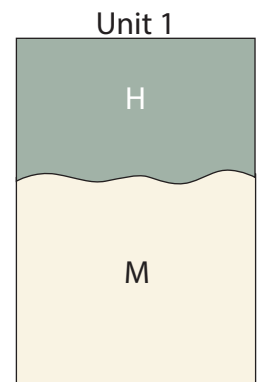


Diagram 5

6. Following the manufacturer's instructions, trace the listed number of each template onto the paper side of the fusible web. Roughly cut out each template about 1/8" outside the drawn lines.
7. Press each template onto the wrong side of the fabrics as listed on the templates. Cut out each template on the drawn lines.

Prairie Life

8. Arrange and press the assorted components of the little girl, clouds and grass onto the Unit 1 background strip (Diagram 6).

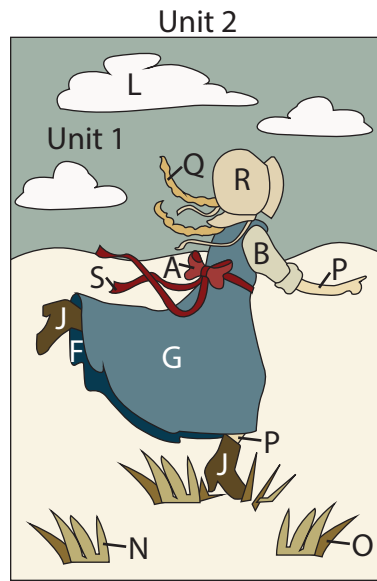


Diagram 6

9. Finish the raw edges of each shape with a decorative stitch such as a buttonhole or satin stitch to make (1) Unit 2 strip (Diagram 6).

10. Sew (1) 1 1/2" x 38 1/2" Fabric J strip to each side of the Unit 2 strip. Sew (1) 1 1/2" x 28 1/2" Fabric J strip to the top and bottom of the Unit 2 strip to make (1) Unit 3 strip (Diagram 7).

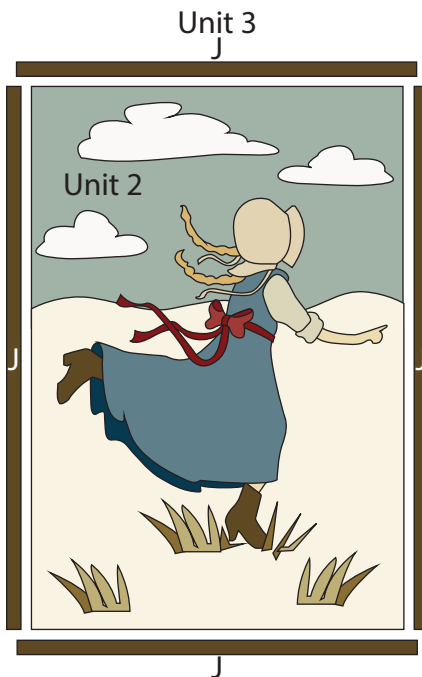


Diagram 7

11. Center (1) 3 1/2" x 50" Fabric K strip on one side of the Unit 3 strip and pin in place. Start sewing the strip a 1/4" from the top edge of the Unit 3 strip and stop a 1/4" from the bottom edge. **DO NOT TRIM THE EXCESS.** Repeat with the opposite side.

12. Repeat Step 11 to sew (1) 3 1/2" x 38" Fabric K strip to the top and to the bottom of the Unit 3 strip, making sure to stop and start 1/4" away from each end of the Unit 3 strip. To miter each corner, fold the Unit 3 strip on a diagonal, wrong side together. This should line up the strips from adjacent sides (Diagram 8).

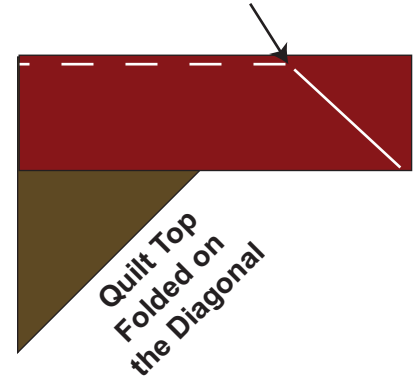


Diagram 8

13. Starting at the sewn seam (represented by the arrow in Diagram 8), draw a 45-degree line to the edge of the fabric. Sew on the drawn line. Trim the excess fabric leaving a 1/4" seam. Repeat this step with the remaining corners to make the 34 1/2" x 46 1/2" Quilt Center (Diagram 9).

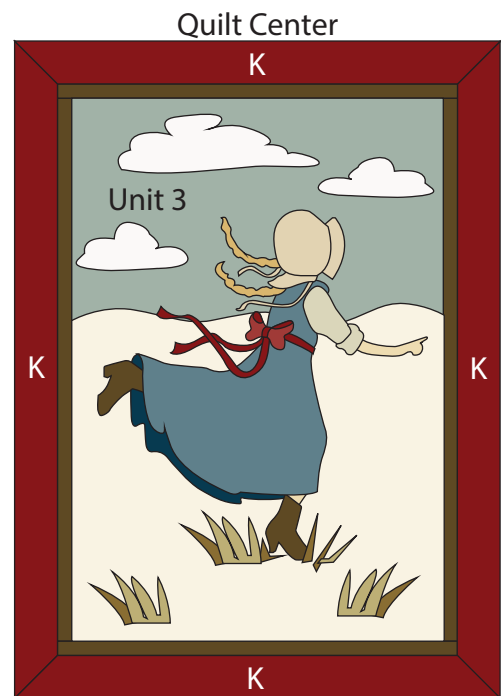
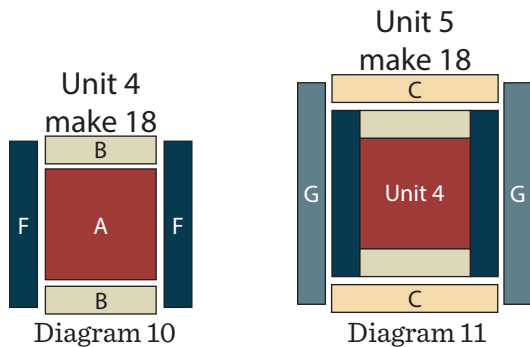


Diagram 9

Prairie Life

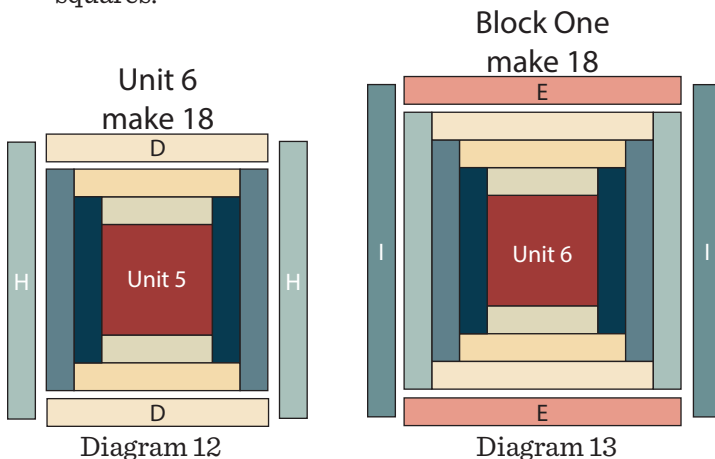
14. Sew (1) 1 1/2" x 4 1/2" Fabric B strip to the top and to the bottom of (1) 4 1/2" Fabric A square. Sew (1) 1 1/2" x 6 1/2" Fabric F strip to each side of the Fabric A square to make (1) 6 1/2" Unit 4 square (Diagram 10). Repeat to make an additional (17) Unit 4 squares.

15. Sew (1) 1 1/2" x 6 1/2" Fabric C strip to the top and to the bottom of (1) Unit 4 square. Sew (1) 1 1/2" x 8 1/2" Fabric G strip to each side of the Unit 4 square to make (1) 8 1/2" Unit 5 square (Diagram 11). Repeat to make an additional (17) Unit 5 squares.



16. Sew (1) 1 1/2" x 8 1/2" Fabric D strip to the top and to the bottom of (1) Unit 5 square. Sew (1) 1 1/2" x 10 1/2" Fabric H strip to each side of the Unit 5 square to make (1) 10 1/2" Unit 6 square (Diagram 12). Repeat to make an additional (17) Unit 6 squares.

17. Sew (1) 1 1/2" x 10 1/2" Fabric E strip to the top and to the bottom of (1) Unit 6 square. Sew (1) 1 1/2" x 12 1/2" Fabric I strip to each side of the Unit 6 square to make (1) 12 1/2" Block One square (Diagram 13). Repeat to make an additional (17) Block One squares.



Quilt Top Assembly

(Refer to the Quilt Layout on Page 6 when assembling the quilt top)

18. Sew (1) 1 1/2" x 46 1/2" Fabric J strip to each side of the Quilt Center. Sew (1) 1 1/2" x 36 1/2" Fabric J strip to the top and bottom of the Quilt Center.

19. Paying attention to the block orientations, sew together (4) Block One squares as shown to make the Left Side Border. Repeat to make the Right Side Border. Sew the Left Side Border and Right Side Border to the left and right sides of the Quilt Center.

20. Paying attention to the block orientations, sew together (5) Block One squares as shown to make the Top Border. Repeat to make the Bottom Border. Sew the Top Border and Bottom Border to the top and bottom of the Quilt Center.

21. Sew (1) 2" x 72 1/2" Fabric J strip to each side of the Quilt Center. Sew (1) 2" x 63 1/2" Fabric J strip to the top and bottom of the Quilt Center to make the Quilt Top.

Finishing the Quilt

22. Layer and quilt as desired.

23. Sew together the (7) binding strips end to end with 45-degree seams. Fold this long strip in half lengthwise with wrong sides together and press.

24. Bind as desired.

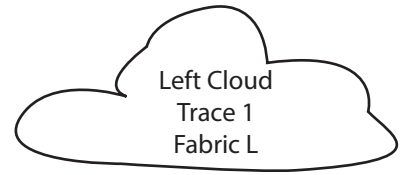


Quilt Layout

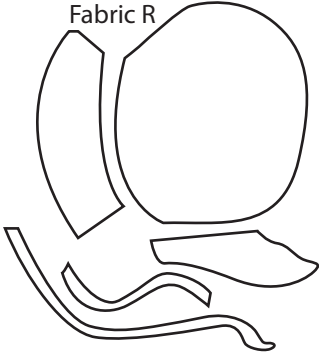
Prairie Life

Prairie Life Templates
Reversed for Fusible Applique
ENLARGE 400%

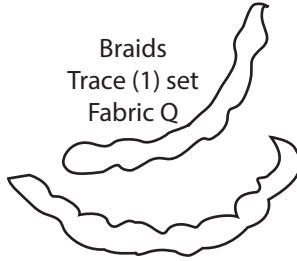
Square should
measure 1" **AFTER**
enlarging 400%



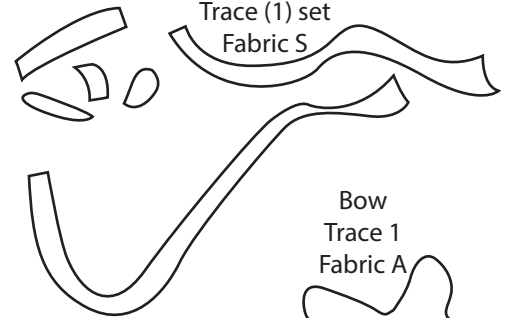
Bonnet
Trace (1) set
Fabric R



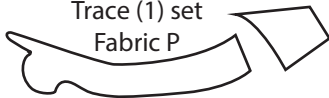
Braids
Trace (1) set
Fabric Q



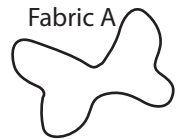
Ties & Inner Bow
Trace (1) set
Fabric S



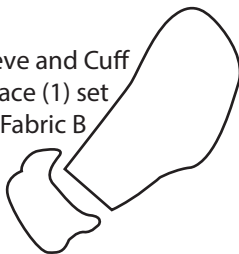
Arm and Leg
Trace (1) set
Fabric P



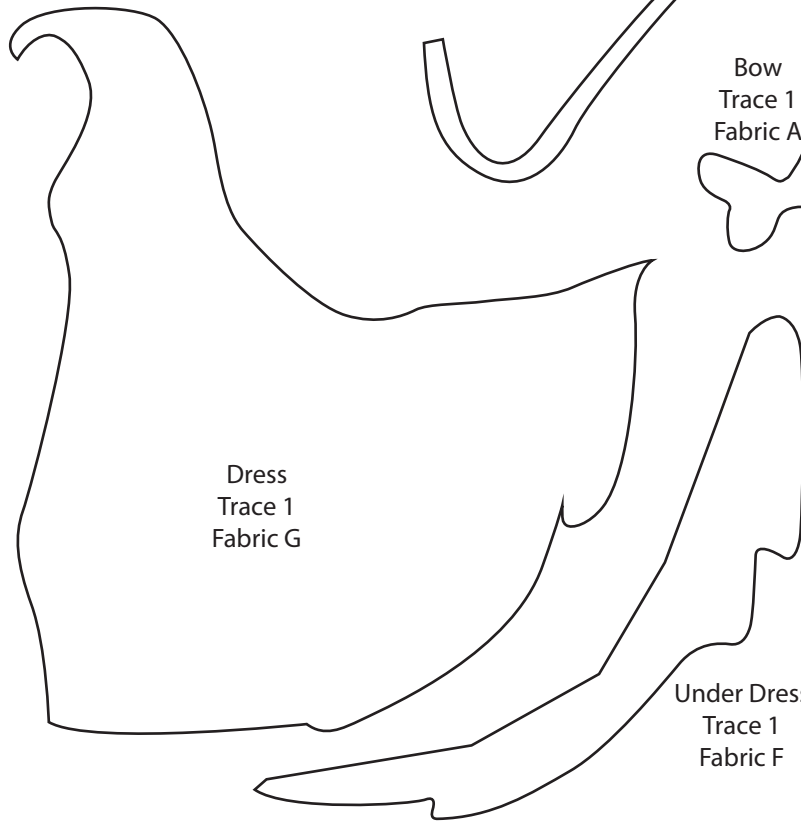
Bow
Trace 1
Fabric A



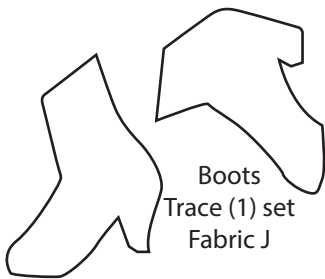
Sleeve and Cuff
Trace (1) set
Fabric B



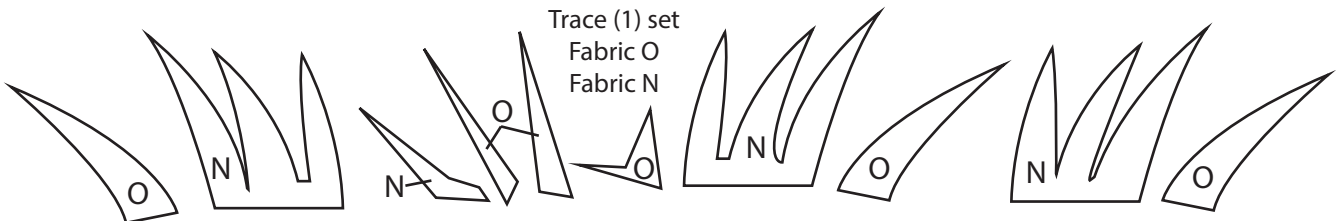
Dress
Trace 1
Fabric G



Under Dress
Trace 1
Fabric F

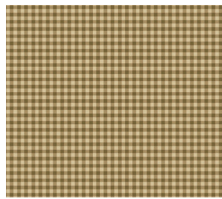


Grass
Trace (1) set
Fabric O
Fabric N

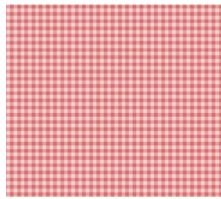


Plum Creek by Little House on the Prairie®

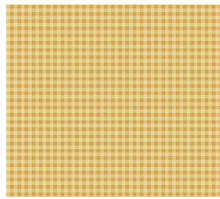
ANDOVER FABRICS



10681-N



10681-R



10681-Y 1/8 yd



10683-B



10683-N



10683-R 1/4 yd



10684-B 1 yd



10684-E



10684-N 4 2/3 yds
(backing)



10685-B



10685-N



10685-R 1 1/2 yds



10686-N 1/8 yd



10686-R 1 1/8 yds
(includes binding)



10686-T 7/8 yd



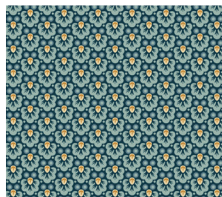
10687-B 2/3 yd



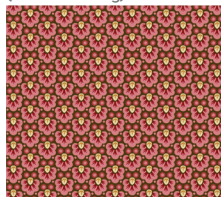
10687-E 2/3 yd



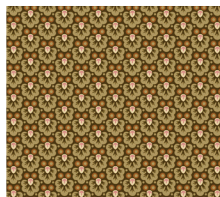
10687-N 1/4 yd



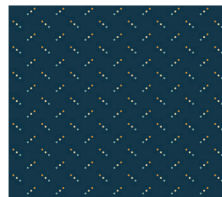
10688-B



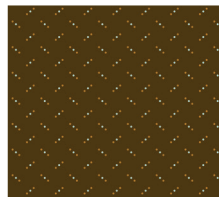
10688-E



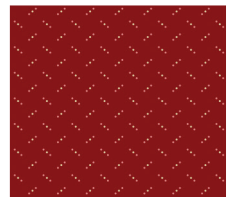
10688-N



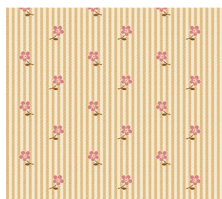
10689-B



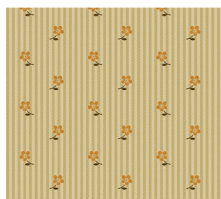
10689-N 1 1/4 yds



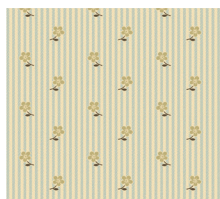
10689-R 1/4 yd



10690-E 1/2 yd



10690-N



10690-T 1/2 yd



10691-E



10691-N



10691-T



10692-E



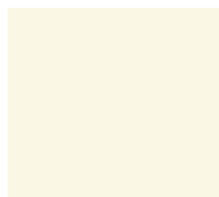
10692-L 1/2 yd



10692-T 1 1/4 yds



CS-10-Almond* 1/8 yd



CS-10-Cream* 1/4 yd



10694-L** 1 yd

Bolts needed to cut project kits: 15 yds = 1 bolt

Century Solids: 10 yds = 1 bolt

Fabrics shown are 25% of actual size.

* Century Solids Collection

** Icons Collection

andover : makower uk

Free Pattern Download Available

1384 Broadway New York, NY 10018

Tel. (800) 223-5678 • andoverfabrics.com