

ALWAYS ANDOVER PROJECTS



Scrappy Plains Quilt designed by: **Andover Design Team**
Quilt Size: **77" x 90 1/2"** • Skill Level: **Confident Beginner**

LITTLE HOUSE ON THE PRAIRIE® and associated character names, designs, images and logos are trademarks or registered trademarks owned and licensed by Friendly Family Productions, LLC. ©2027 Friendly Family Productions, LLC. All rights reserved.

AndoverFabrics.com @AndoverFabrics #AlwaysAndover ©2026 Andover Fabrics. Free pattern for educational purposes only.

Scrappy Plains



Featuring Plum Creek and Prairie Blossoms collections by Little House on the Prairie®

Quilt designed by Andover Design Team

Quilt finished 77" x 90 1/2"

Quilt Cutting Directions

Note: Read assembly directions before cutting.

Fabrics are cut to exact length required plus 1/4" seam allowance. WOF designates the width of fabric from selvedge to selvedge (approximately 42" wide).

- Fabric A** Choose (30) 10" squares from 10" square pack.
- Fabric B** Cut (60) 2 1/2" x 10" strips from strip pack.
- Fabric C** Cut (8) 1 1/2" x WOF strips. Sub-cut the strips into (30) 1 1/2" x 10" strips.
- Fabric D** Cut (13) 2 1/2" x WOF strips. Sub-cut the strips into (25) 2 1/2" x 15" strips.
Cut (7) 2 1/2" x WOF strips. Sew the strips together end to end with diagonal seams and cut (4) 2 1/2" x 67 1/2" strips.
Cut (4) 2 1/2" x WOF strips. Sew the strips together end to end with diagonal seams and cut (2) 2 1/2" x 81" strips.
Cut (4) 2 1/2" x WOF strips. Sew the strips together end to end with diagonal seams and cut (2) 2 1/2" x 71 1/2" strips.
- Fabric E** Cut (5) 3 1/2" x WOF strips. Sew the strips together end to end with diagonal seams and cut (2) 3 1/2" x 85" strips.
Cut (4) 3 1/2" x WOF strips. Sew the strips together end to end with diagonal seams and cut (2) 3 1/2" x 77 1/2" strips.
- Binding** Cut (9) 2 1/2" x WOF strips.
- Backing** Cut (3) 85" x WOF strips. Sew the strips together and trim to make (1) 85" x 99" backing.

Fabric Requirements

Quilt	Yardage*	Fabric
Fabric A blocks	Plum Creek 10" square pack (42) 10" squares	
Fabric B blocks	Prairie Blossoms 2 1/2" strip pack (42) 2 1/2" strips	
Fabric C blocks	1/2 yard	10675-Y
Fabric D sashing	2 1/4 yards	10682-L
Fabric E borders	1 yard	10677-P
Binding	3/4 yard	10689-R
Backing	7 1/8 yards	10674-L

Making the Quilt

Note: Pay attention to the unit orientations when assembling the various components.

Block Assembly

- Sew together (1) 2 1/2" x 10" Fabric B strip, (1) 1 1/2" x 10" Fabric C strip, (1) 2 1/2" x 10" Fabric B strip and (1) 10" Fabric A square, lengthwise and in that order from top to bottom, to make (1) 10" x 15" Block One rectangle (Diagram 1).
- Repeat Step 1 to make an additional (29) Block One rectangles.
- Paying attention to the orientation of the blocks, sew together (6) Block One rectangles and (5) 2 1/2" x 15" Fabric D strips to make Row One (Diagram 2).
- Repeat Step 3 and refer to Diagram 2 for placement and orientation to make Row Two through Row Five.
- Sew together the (5) pieced Rows in numerical order and (4) 2 1/2" x 67 1/2" Fabric D strips to make the 67 1/2" x 81" Quilt Center (Diagram 2).

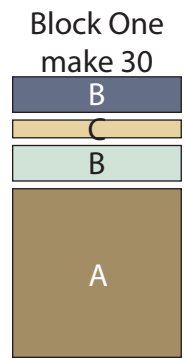


Diagram 1

Scrappy Plains

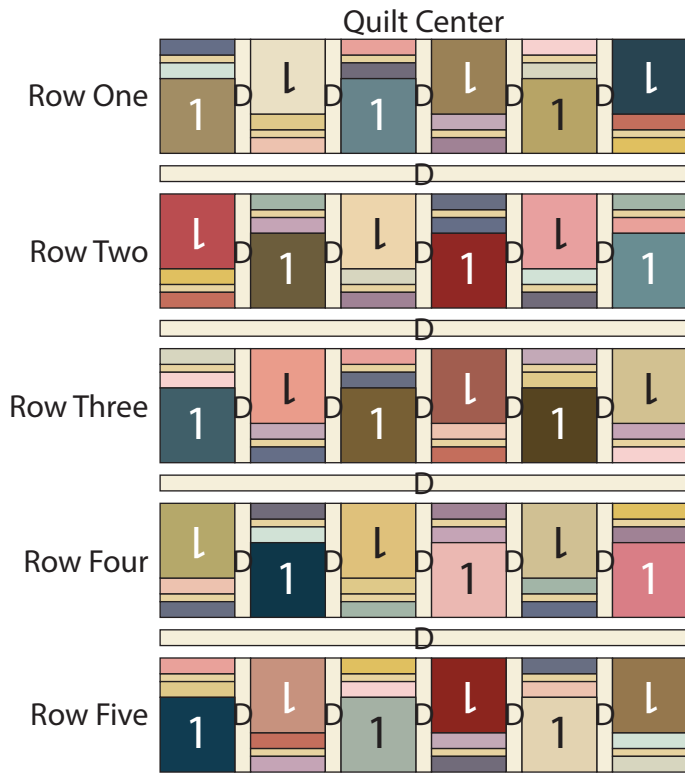


Diagram 2

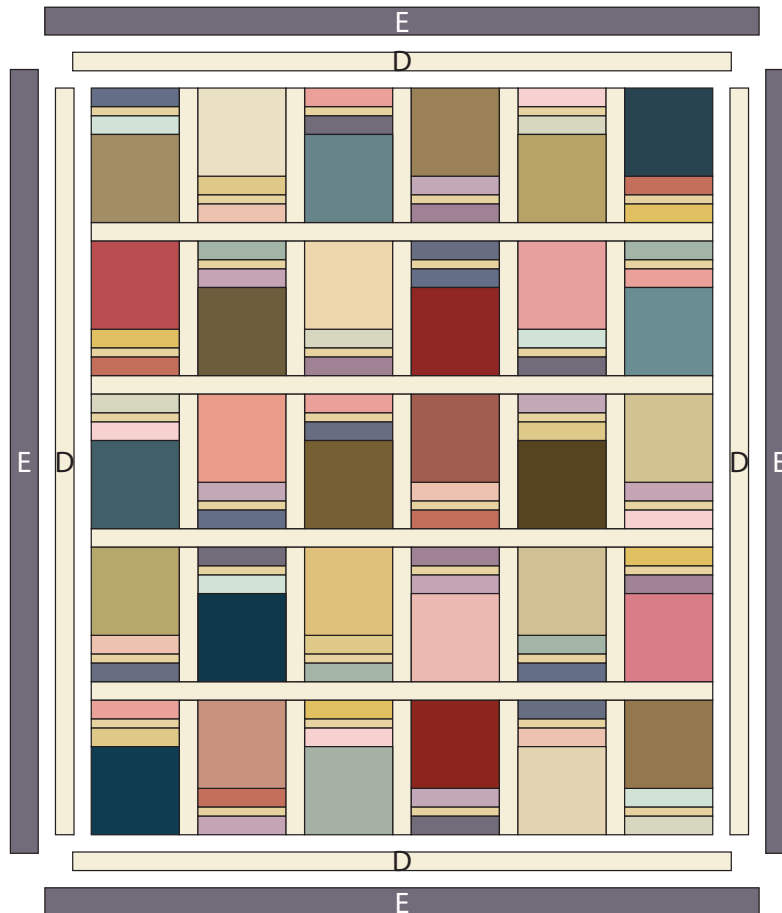
Quilt Top Assembly

(Refer to the Quilt Layout when assembling the quilt top.)

- Sew (1) 2 1/2" x 81" Fabric D strip to each side of the Quilt Center. Sew (1) 2 1/2" x 71 1/2" Fabric D strip to the top and bottom of the Quilt Center.
- Sew (1) 3 1/2" x 85" Fabric E strip to each side of the Quilt Center. Sew (1) 3 1/2" x 77 1/2" Fabric E strip to the top and bottom of the Quilt Center to make the Quilt Top.

Finishing the Quilt

- Layer and quilt as desired.
- Sew together the (9) binding strips end to end with 45-degree seams. Fold this long strip in half lengthwise with wrong sides together and press.
- Bind as desired.



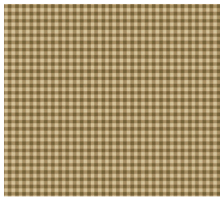
Quilt Layout

Plum Creek by Little House on the Prairie®

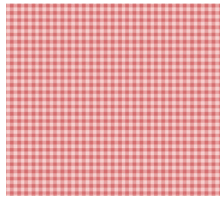
ANDOVER FABRICS



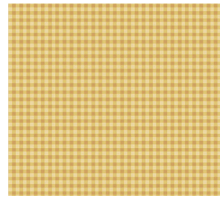
Note: You will need (1) Plum Creek 10" square pack and (1) Prairie Blossoms 2 1/2" strip pack in addition to the yardages listed below.



10681-N



10681-R



10681-Y



10683-B



10683-N



10683-R



10684-B



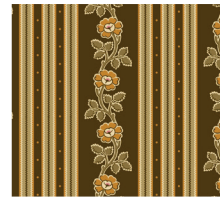
10684-E



10684-N



10685-B



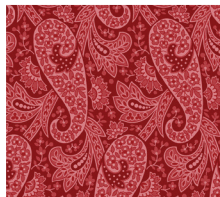
10685-N



10685-R



10686-N



10686-R



10686-T



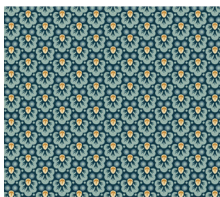
10687-B



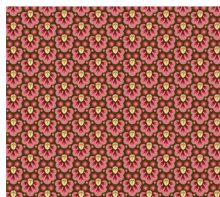
10687-E



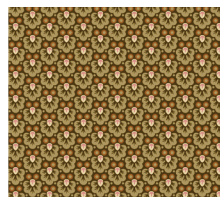
10687-N



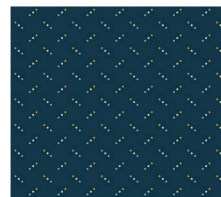
10688-B



10688-E



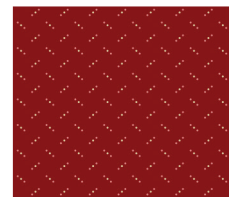
10688-N



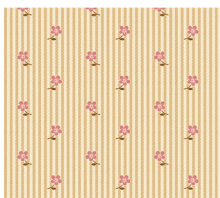
10689-B



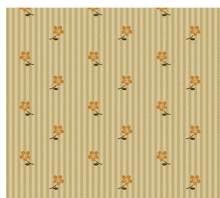
10689-N



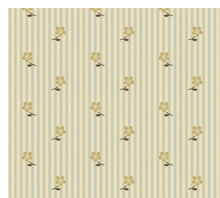
10689-R ³/₄ yd
(binding)



10690-E



10690-N



10690-T



10691-E



10691-N



10691-T



10692-E



10692-L



10692-T

Bolts needed to cut project kits: 15 yds = 1 bolt

Fabrics shown are 25% of actual size.

andover • makower.uk

Free Pattern Download Available

1384 Broadway New York, NY 10018
Tel. (800) 223-5678 • andoverfabrics.com

Prairie Blossoms by Little House on the Prairie®



ANDOVER FABRICS

Note: You will need (1) Plum Creek 10" square pack and (1) Prairie Blossoms 2 1/2" strip pack in addition to the yardages listed below.



10674-E



10674-L 7 1/8 yds
(backing)



10674-P



10675-E



10675-P



10675-Y 1/2 yd



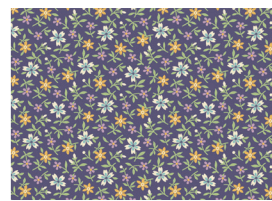
10676-E



10676-N



10676-P



10677-P 1 yd



10677-R



10677-Y



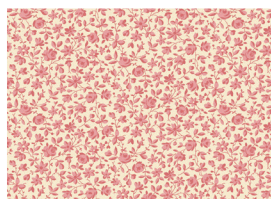
10678-E



10678-T



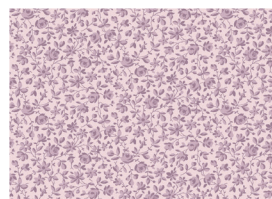
10678-Y



10679-E



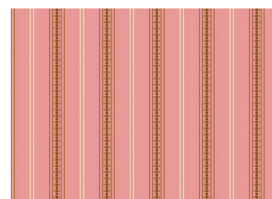
10679-N



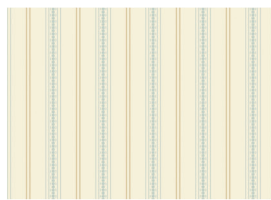
10679-P



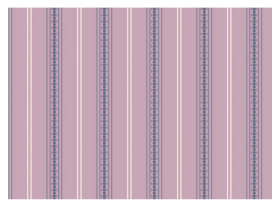
10679-Y



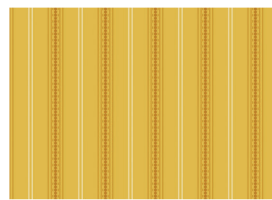
10680-E



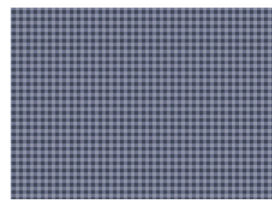
10680-L



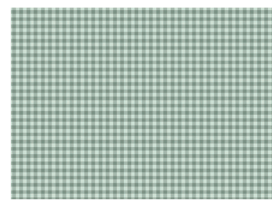
10680-P



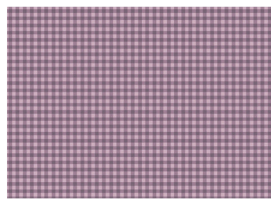
10680-Y



10681-B



10681-G



10681-P



10682-E



10682-L 2 1/4 yds



10682-N

Bolts needed to cut project kits: 15 yds = 1 bolt

Fabrics shown are 25% of actual size.

andover • makower.uk

Free Pattern Download Available

1384 Broadway New York, NY 10018

Tel. (800) 223-5678 • andoverfabrics.com