

ALWAYS ANDOVER PROJECTS



+



+



=



Eight Month - BOM Shop Guide



Whispered Wishes BOM Quilt designed by: **Andover Design Team**

Finished Quilt Size: **80" x 80"** • Skill Level: **Confident Beginner**

Fabric Collection: **Special Delivery by Edyta Sitar of Laundry Basket Quilts**

Whispered Wishes BOM - Shop Guide

OVERALL FABRIC REQUIREMENTS

SKU	FABRIC	MONTH(S) USED	1 KIT
1673-B	A	4	1/4 yd
1673-LN	B	2, 3, 4	3/4 yd
10467-B	C	4, 6	1 yd
10467-B1	D	6, 8	1 2/3 yds
10468-BL	E	2	1/4 yd
10468-L	F	3	1/4 yd
10469-BL	G	4	1/4 yd
10469-L	H	1, 5	1/2 yd
10471-B	I	2	3/8 yd
10471-B1	J	1	1/4 yd
10472-B	K	5, 6, 8	1 1/4 yds
10472-L	L	3	1/2 yd
10473-B	M	5	1/4 yd
10473-L	N	1	1/4 yd
10474-B	O	1, 2, 4	7/8 yd
10474-B1	P	1, 2, 3, 4	1 yd
10474-BL	Q	5	1/4 yd
10474-L	R	2	1/4 yd
10475-B	S	1, 5	5/8 yd
10475-L	T	7	1/4 yd
10477-B	U	3, 5	1/2 yd
10477-L	V	1, 5	1/2 yd
10478-B	W	1, 2, 4, 5	1 yd
10478-L	X	7	1/4 yd
10479-B	Y	3, 4	5/8 yd
10480-L	Z	7, 8	1 5/8 yds
10481-B	AA	7	1/2 yd
10482-L	BB	7	1/4 yd
10483-B	CC	7	1/2 yd
10484-L	DD	6	1/2 yd
10485-B	EE	3	3/8 yd
10486-L	FF	2, 4	5/8 yd
10475-B	Binding	8	2/3 yd
10489-L	Backing (108")	8	2 1/2 yds

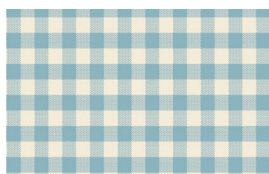
Whispered Wishes BOM - Shop Guide

MONTHLY FABRIC REQUIREMENTS

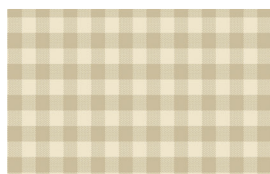
SKU	FABRIC	ONE	TWO	THREE	FOUR	FIVE	SIX	SEVEN	EIGHT
1673-B	A				1/4 yd				
1673-LN	B		Fat 1/8	1/4 yd	Fat 1/8				
10467-B	C				Fat 1/8		2/3 yd		
10467-B1	D						2/3 yd		1 yd
10468-BL	E		1/4 yd						
10468-L	F			1/4 yd					
10469-BL	G				1/4 yd				
10469-L	H	1/4 yd				1/4 yd			
10471-B	I		3/8 yd						
10471-B1	J	1/4 yd							
10472-B	K					1/4 yd	1/2 yd		1/2 yd
10472-L	L			1/2 yd					
10473-B	M					1/4 yd			
10473-L	N	1/4 yd							
10474-B	O	3/8 yd	Fat 1/8		1/4 yd				
10474-B1	P	1/4 yd	Fat 1/8	1/4 yd	Fat 1/8				
10474-BL	Q					1/4 yd			
10474-L	R		1/4 yd						
10475-B	S	1/4 yd				3/8 yd			
10475-L	T							1/4 yd	
10477-B	U			1/4 yd		1/4 yd			
10477-L	V	1/4 yd				1/4 yd			
10478-B	W	1/4 yd	1/4 yd		1/4 yd	1/4 yd			
10478-L	X							1/4 yd	
10479-B	Y			1/4 yd	3/8 yd				
10480-L	Z							1 1/8 yds	1/2 yd
10481-B	AA							1/2 yd	
10482-L	BB							1/4 yd	
10483-B	CC							1/2 yd	
10484-L	DD						1/2 yd		
10485-B	EE			3/8 yd					
10486-L	FF		1/3 yd		1/4 yd				
10475-B	Binding								2/3 yd
10489-L	Backing (108")								2 1/2 yds

Special Delivery

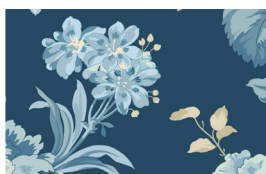
EDYTA SITAR OF LAUNDRY BASKET QUILTS



A 1673-B



B 1673-LN



C 10467-B



D 10467-B1



10467-L



E 10468-BL



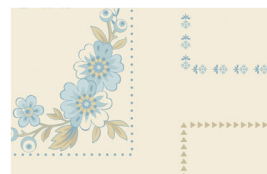
F 10468-L



G 10469-BL



H 10469-L



10470-L



I 10471-B



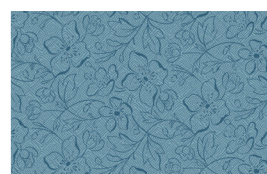
J 10471-B1



K 10472-B



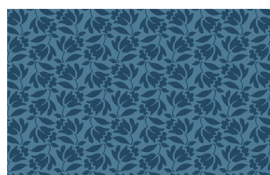
L 10472-L



M 10473-B



N 10473-L



O 10474-B



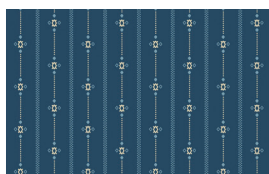
P 10474-B1



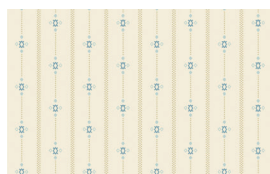
Q 10474-BL



R 10474-L



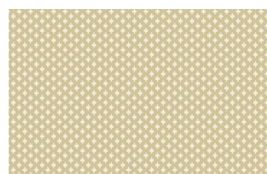
S 10475-B



T 10475-L



U 10477-B



V 10477-L



W 10478-B



X 10478-L



Y 10479-B



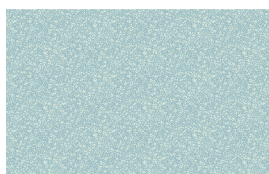
Z 10480-L



AA 10481-B



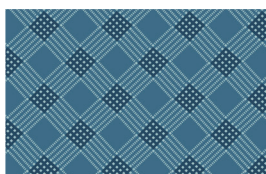
BB 10482-L



CC 10483-B



DD 10484-L



EE 10485-B



FF 10486-L

Bolts: 15 yds = 1 bolt
Fabrics shown 25% of actual size.

andover • makower.uk

Free Pattern Download Available

1384 Broadway New York, NY 10018

Tel. (800) 223-5678 • andoverfabrics.com