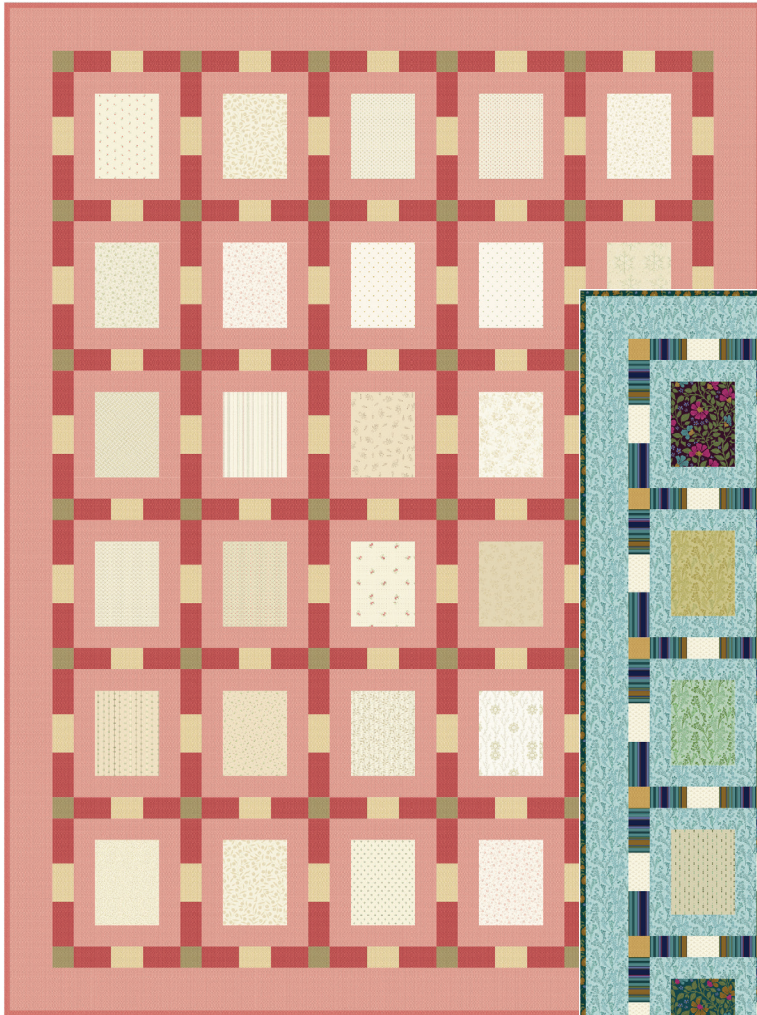


ALWAYS ANDOVER PROJECTS



Pink Version



Blue Version



Showcase Quilt designed by: **Andover Fabrics**

Quilt Size: **70" x 94"** • Skill Level: **Confident Beginner**

Showcase



Featuring Andover Fabrics new collections: Garland | Lush | Snow Flurry

Quilt designed by Andover Fabrics

Fabric Requirements (Blue Version)

Quilt	Yardage	Fabric
Fabric A blocks	Fat ¼ ea.	10336-E* 10336-L* 10336-T* 10337-E* 10337-T* 10338-E* 10338-G* 10338-V* 10339-E* 10339-G* 10339-T* 10339-Y* 10340-E* 10340-G* 10341-E* 10341-L* 10342-G* 10342-P* 10342-T*
Fabric B blocks, borders	3 ⅓ yards	10338-T*
Fabric C sashing	1 ⅔ yards	10341-T*
Fabric D sashing	¾ yard	10340-L*
Fabric E cornerstones	⅓ yard	10299-Y**
Binding	¾ yard	10337-G*
Backing	5 ¾ yards	10340-T*

* Lush Collection

** Garland Collection

Fabric Requirements (Pink Version)

Quilt	Yardage	Fabric
Fabric A blocks	Fat ¼ ea.	10300-LG* 10301-L* 10302-L* 10303-L* 10304-L* 10305-LG* 10305-LY* 10306-G* 10307-G* 10307-R* 10308-N* 10309-L* 10310-LE* 10310-LG* 10310-LY* 10311-G* 10311-N* 10312-LE* 10312-LG* 10313-L* 10314-L* 10315-LG* 10316-N* 10317-L* 10318-LE* 10319-L*
Fabric B blocks, borders	3 ⅓ yards	10299-E1**
Fabric C sashing	1 ⅔ yards	10299-R**
Fabric D sashing	¾ yard	10299-Y1**
Fabric E cornerstones	⅓ yard	10299-V**
Binding	¾ yard	10299-E**
Backing	5 ¾ yards	10299-E2**

* Snow Flurry Collection

** Garland Collection

Showcase

Quilt finished 70" x 94"

Quilt Cutting Directions (Both Versions)

Note: Read assembly directions before cutting patches. Borders are cut to exact length required plus $\frac{1}{4}$ " seam allowance. WOF designates the width of fabric from selvedge to selvedge (approximately 42" wide).

Fabric A Cut (30) $6\frac{1}{2}$ " x $8\frac{1}{2}$ " rectangles.

Fabric B Cut (5) $4\frac{1}{2}$ " x WOF strips. Sew the strips together end to end and cut (2) $4\frac{1}{2}$ " x $86\frac{1}{2}$ " strips.

Cut (4) $4\frac{1}{2}$ " x WOF strips. Sew the strips together end to end and cut (2) $4\frac{1}{2}$ " x $70\frac{1}{2}$ " strips.

Cut (15) $2\frac{1}{2}$ " x WOF strips. Sub-cut the strips into (60) $2\frac{1}{2}$ " x $10\frac{1}{2}$ " strips.

Cut (15) $2\frac{1}{2}$ " x WOF strips. Sub-cut the strips into (60) $2\frac{1}{2}$ " x $8\frac{1}{2}$ " strips.

Fabric C Cut (3) $4\frac{3}{4}$ " x 42" WOF strips. (**Cut 1st**)
Cut (3) $4\frac{3}{4}$ " x 42" Length of Fabric (LOF) strips.

Cut (6) 4" x 42" LOF strips.

Fabric D Cut (3) 4" x 42" WOF strips.
Cut (3) $3\frac{1}{2}$ " x 42" WOF strips.

Fabric E Cut (3) $2\frac{1}{2}$ " x WOF strips. Sub-cut the strips into (42) $2\frac{1}{2}$ " squares.

Binding Cut (9) $2\frac{1}{2}$ " x WOF strips.

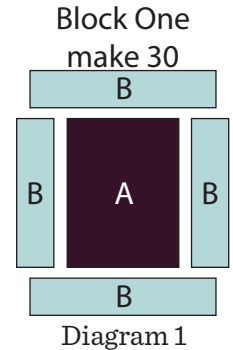
Backing Cut (2) 102" x WOF strips. Sew the strips together and trim to make (1) 78" x 102" backing.

Making the Quilt

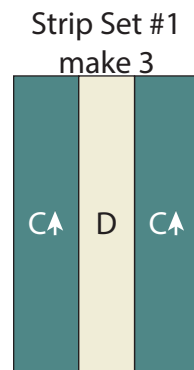
Note: Pay attention to the unit orientations when assembling the various components.

Block Assembly

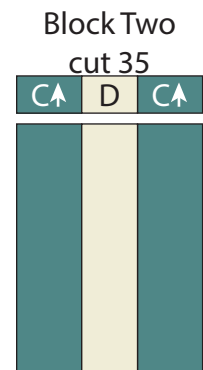
1. Sew (1) $2\frac{1}{2}$ " x $8\frac{1}{2}$ " Fabric B strip to each side of (1) $6\frac{1}{2}$ " x $8\frac{1}{2}$ " Fabric A rectangle. Sew (1) $2\frac{1}{2}$ " x $10\frac{1}{2}$ " Fabric B strip to the top and bottom of the Fabric A rectangle to make (1) $10\frac{1}{2}$ " x $12\frac{1}{2}$ " Block One rectangle (Diagram 1). Repeat to make an additional (29) Block One rectangles.



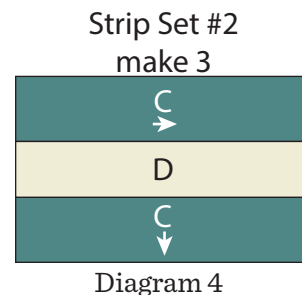
2. Sew (1) 4" x 42" Fabric C LOF strip to each side of (1) $3\frac{1}{2}$ " x 42" WOF Fabric D strip to make (1) Strip Set #1 (Diagram 2). Repeat to make (2) additional Strip Set #1's.



3. Cut the (3) Strip Set #1's into (35) $2\frac{1}{2}$ " x $10\frac{1}{2}$ " Block Two strips (Diagram 3).

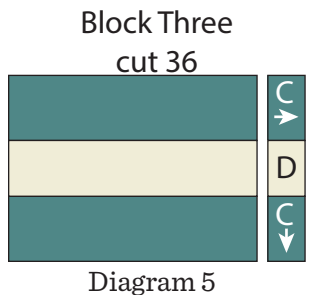


4. Sew together (1) $4\frac{3}{4}$ " x 42" LOF Fabric C strip, (1) 4" x WOF Fabric D strip and (1) $4\frac{3}{4}$ " x 42" WOF Fabric C strip, lengthwise and in that order from top to bottom, to make (1) Strip Set #2 (Diagram 4). Repeat to make an additional (2) Strip Set #2's.



Showcase

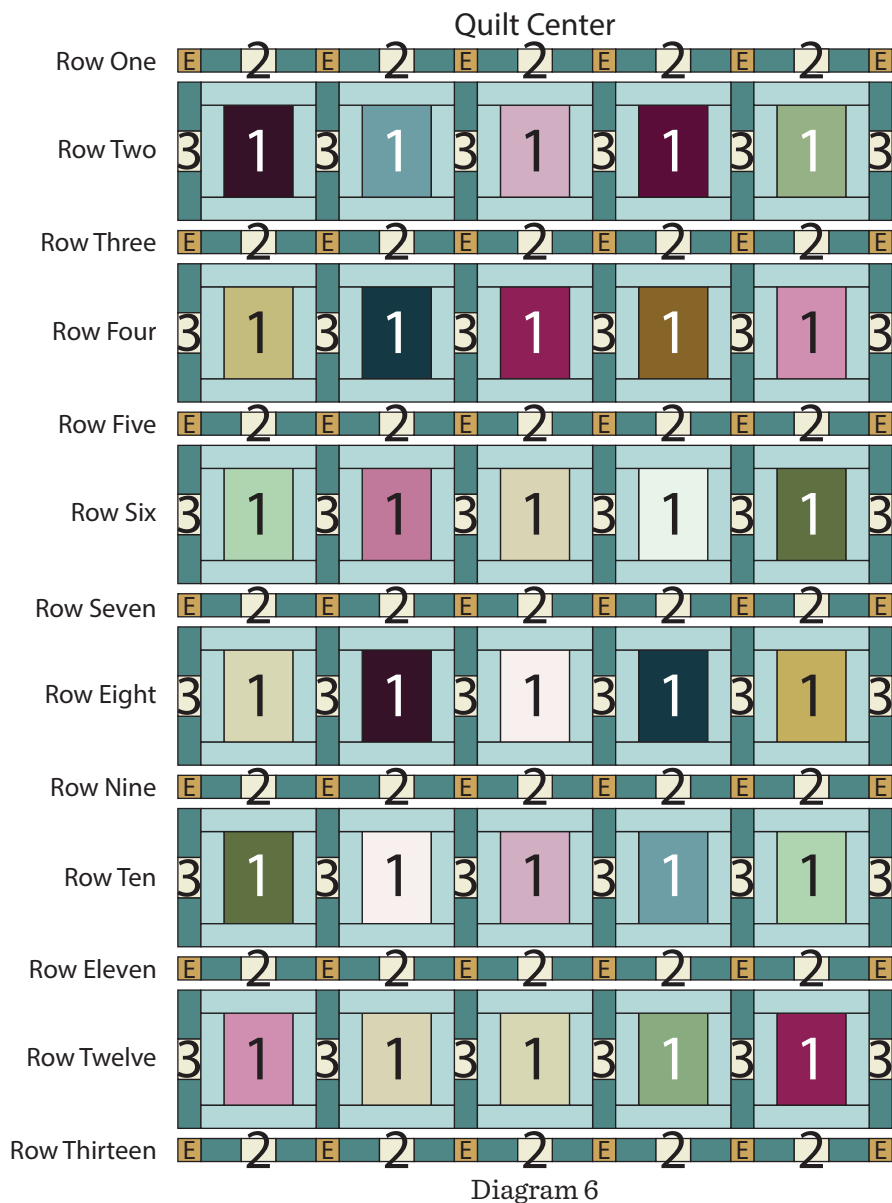
5. Cut the (3) Strip Set #2's into (36) $2\frac{1}{2}$ " x $12\frac{1}{2}$ " Block Three strips (Diagram 5).



6. Sew together (6) $2\frac{1}{2}$ " Fabric E squares and (5) Block Two strips, end to end and alternating them from left to right, to make Row One (Diagram 6). Repeat to make Row Three, Row Five, Row Seven, Row Nine, Row Eleven and Row Thirteen.

7. Sew together (6) Block Three strips and (5) Block One rectangles, alternating them from left to right, to make Row Two (Diagram 6). Repeat to make Row Four, Row Six, Row Eight, Row Ten and Row Twelve.

8. Sew together the (13) pieced Rows, lengthwise and in numerical order from top to bottom, to make the $62\frac{1}{2}$ " x $86\frac{1}{2}$ " Quilt Center (Diagram 6).



Showcase

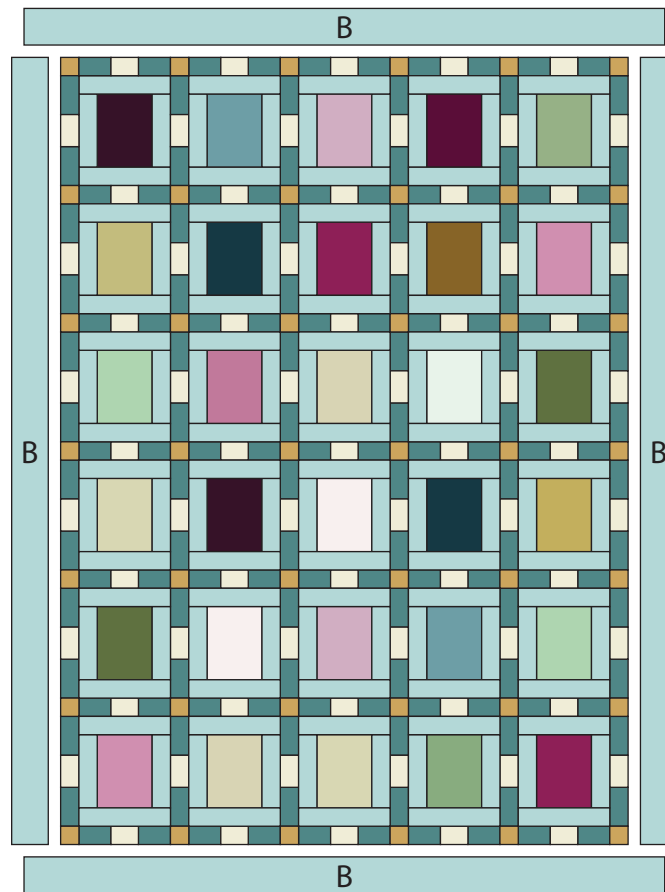
Quilt Top Assembly

(Refer to the Quilt Layout when assembling the quilt top.)

9. Sew (1) 4 ½" x 86 ½" Fabric B strip to each side of the Quilt Center. Sew (1) 4 ½" x 70 ½" Fabric B strip to the top and bottom of the Quilt Center to make the Quilt Top.

Finishing the Quilt

10. Layer and quilt as desired.
11. Sew together the (9) binding strips end to end with 45-degree seams. Fold this long strip in half lengthwise with wrong sides together and press.
12. Bind as desired.



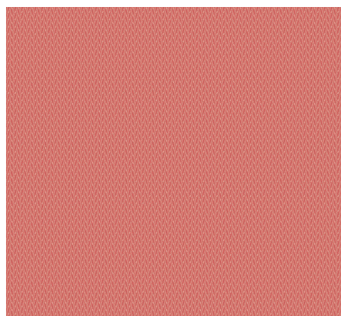
Quilt Layout

Garland

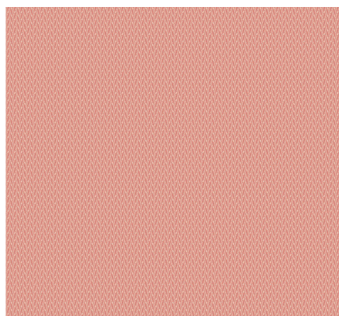
LAUNDRY BASKET QUILTS



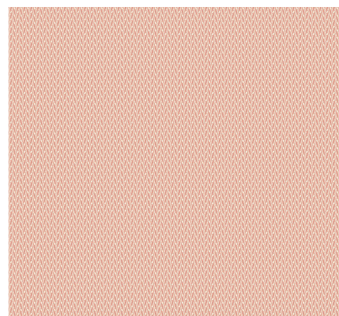
Please reference the specific fabric requirements for the selected quilt version on Page 2.



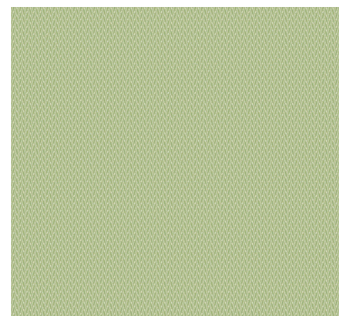
10299-E



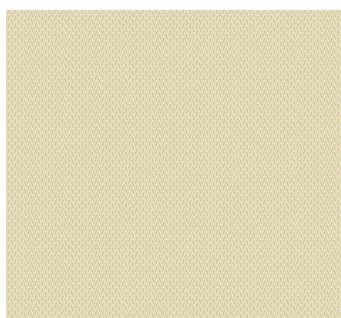
10299-E1



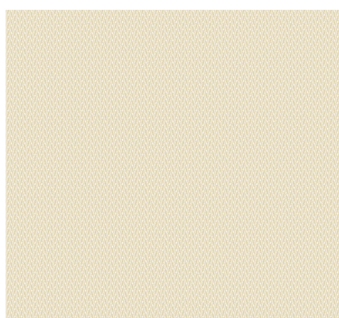
10299-E2



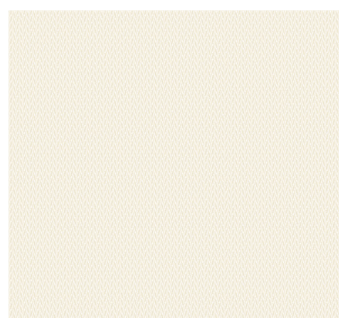
10299-G



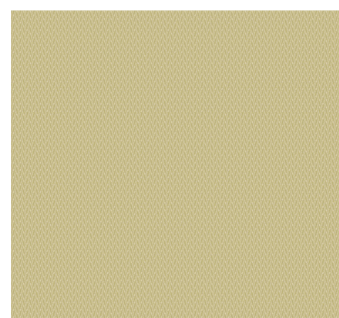
10299-L



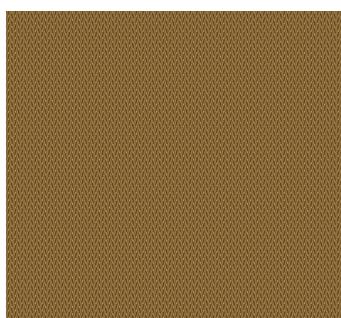
10299-L1



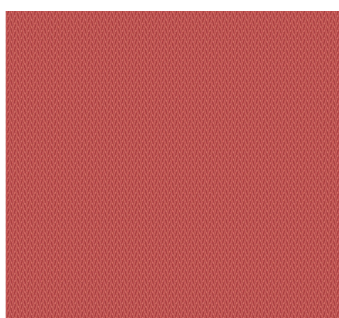
10299-L2



10299-LV



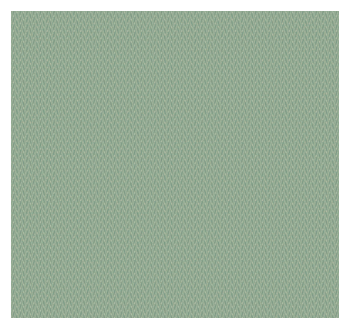
10299-N



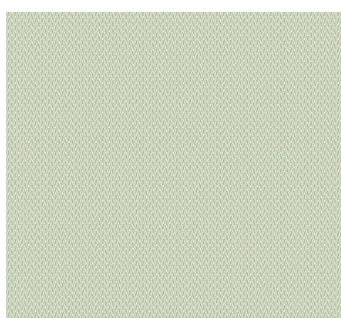
10299-R



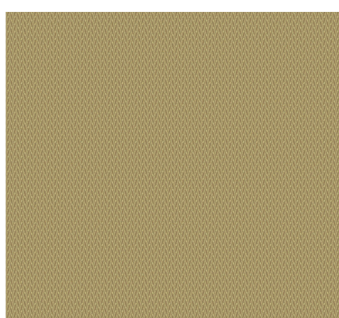
10299-T



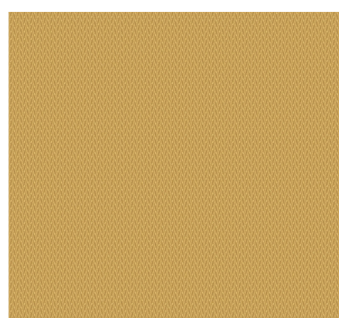
10299-T1



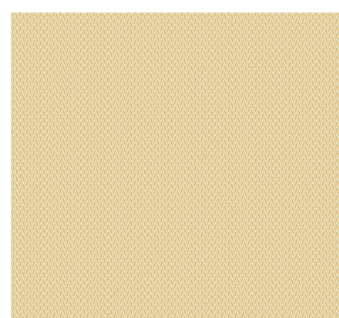
10299-T2



10299-V



10299-Y



10299-Y1

Bolts needed to cut project kits: 15 yds = 1 bolt

Fabrics shown are 25% of actual size.

Lush

NANCY RINK



Please reference the specific fabric requirements for the selected quilt version on Page 2.



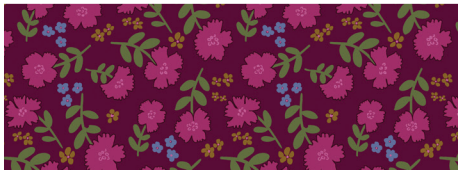
10336-E



10336-L



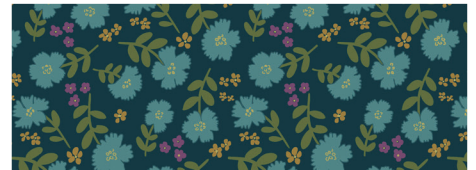
10336-T



10337-E



10337-G



10337-T



10338-E



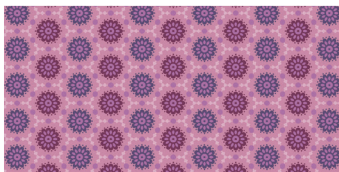
10338-G



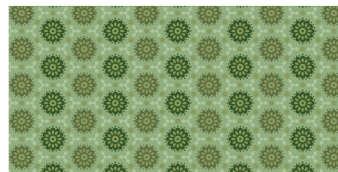
10338-T



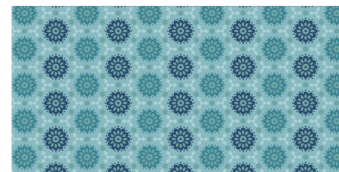
10338-V



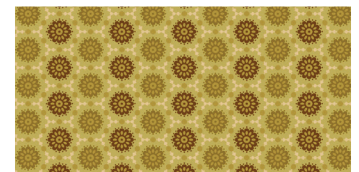
10339-E



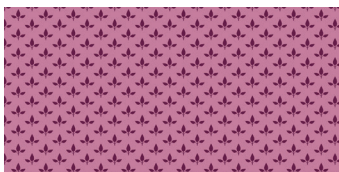
10339-G



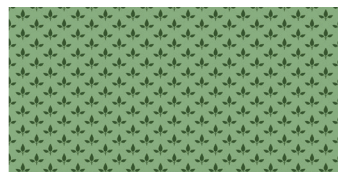
10339-T



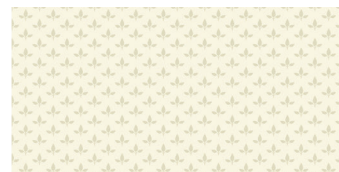
10339-Y



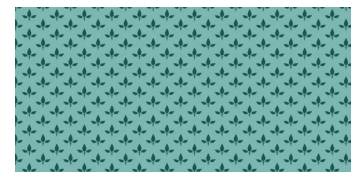
10340-E



10340-G



10340-L



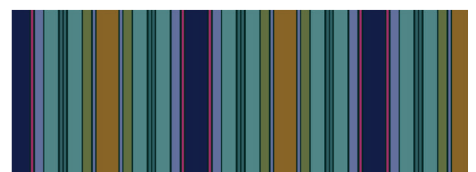
10340-T



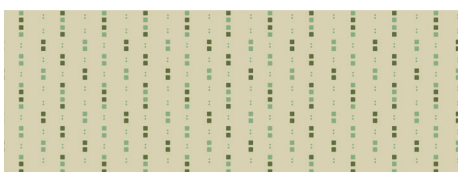
10341-E



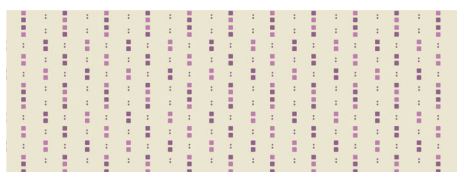
10341-L



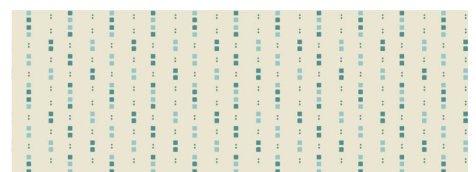
10341-T



10342-G



10342-P



10342-T

Bolts needed to cut project kits: 15 yds = 1 bolt

Fabrics shown are 25% of actual size.

•
andover • makower uk
 •

Free Pattern Download Available

1384 Broadway New York, NY 10018
 Tel. (800) 223-5678 • andoverfabrics.com

Snow Flurry

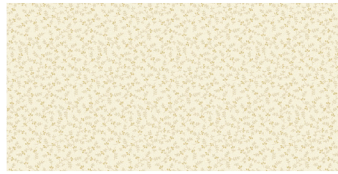
LAUNDRY BASKET QUILTS



Please reference the specific fabric requirements for the selected quilt version on Page 2.



10300-LG



10301-L



10302-L



10303-L



10304-L



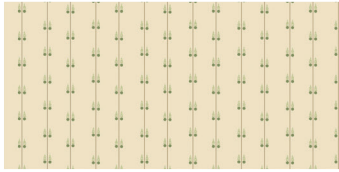
10305-LG



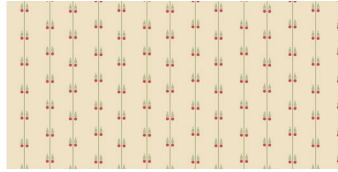
10305-LY



10306-G



10307-G



10307-R



10308-N



10309-L



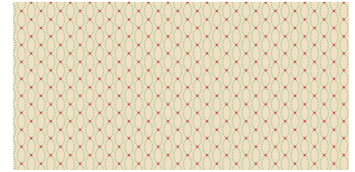
10310-LE



10310-LG



10310-LY



10311-G



10311-N



10312-LE



10312-LG



10313-L



10314-L



10315-LG



10316-N



10317-L



10318-LE



10319-L

Bolts needed to cut project kits: 15 yds = 1 bolt
 Fabrics shown are 25% of actual size.