

ALWAYS ANDOVER PROJECTS



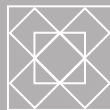
+



+



=



Sparkle Quilt designed by: **Andover Design Team**

Quilt Size: **74 1/4" x 95 1/2"** • Skill Level: **Confident Beginner**

Quilt finished 74 1/4" x 95 1/2"

Quilt Cutting Directions

Note: Read assembly directions before cutting patches. Borders are cut to exact length required plus 1/4" seam allowance. WOF designates the width of fabric from selvedge to selvedge (approximately 42" wide).

Fabric A Cut (51) sets of A1 consisting of:

- (2) 3 3/8" squares. Cut each square across (1) diagonal to make (4) 3 3/8" triangles.
- (1) 3" square.

Cut (51) 3 3/4" squares of A2. Cut each square across both diagonals to make (51) sets of (4) 3 3/4" triangles.

Fabric B Cut (2) 38" squares. Cut each square across (1) diagonal to make (4) 38" triangles.

Cut (1) 22 3/4" square. Cut the square across both diagonals to make (4) 22 3/4" triangles. *Note: You will only use (2) 22 3/4" triangles.*

Cut (2) 8" x WOF strips. Sub-cut the strips into (4) 8" x 15 1/2" strips.

Cut (2) 8" x 23" WOF strips.

Cut (2) 8" x WOF strips. Sub-cut the strips into (8) 8" squares.

Cut (6) 3 3/4" x WOF strips. Sub-cut the strips into (51) 3 3/4" squares. Cut each square across both diagonals to make (204) 3 3/4" triangles.

Cut (15) 3" x WOF strips. Sub-cut the strips into (204) 3" squares.

Binding Cut (9) 2 1/2" x WOF strips.

Backing Cut (2) 104" x WOF strips. Sew the strips together and trim to make (1) 83" x 104" backing.

Fabric Requirements

Quilt	Yardage	Fabric
Fabric A blocks	(1) Fat 1/4 Bundle*	
Fabric B background	6 yards	187-Q
Binding	3/4 yard	2088-G5
Backing	7 yards	184-G

* Bundle contains (30) Fat Quarters

Making the Quilt

Note: Pay attention to the unit orientations when assembling the various components.

1. Block Assembly

Sew together (1) 3 3/4" Fabric B triangle and (1) 3 3/4" Fabric A2 triangle along short sides. Sew (1) 3 3/8" Fabric A1 triangle to the long side of the newly sewn triangle to make (1) 3" Unit 1 square (Diagram 1). Repeat to make an additional (3) matching Unit 1 squares. Repeat to make an additional (50) sets of (4) matching Unit 1 squares.

Unit 1
make 204
(51 sets of 4)

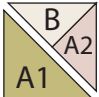
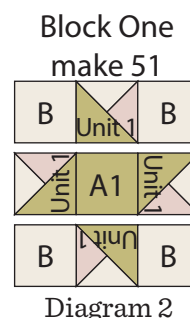


Diagram 1

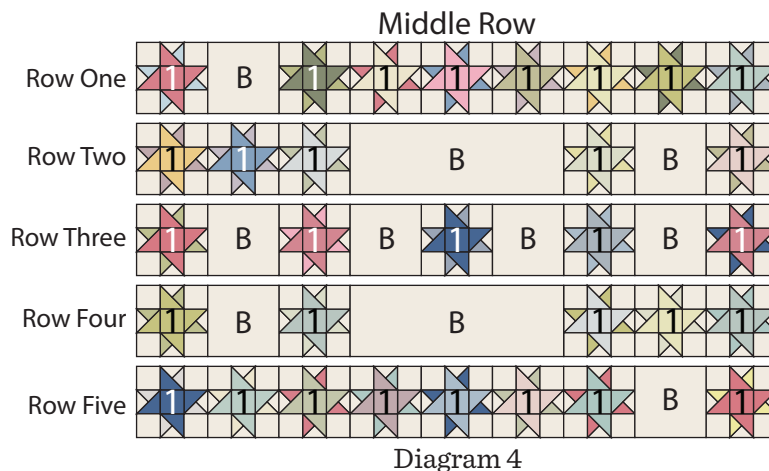
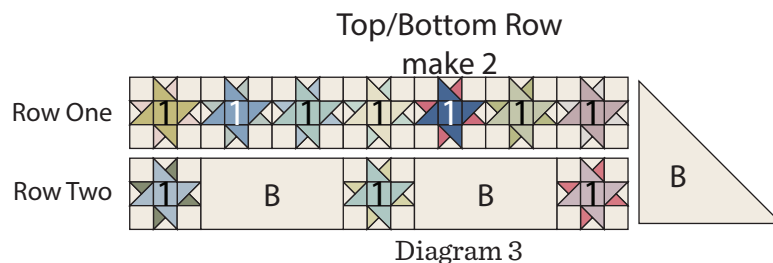
2. Select (4) matching Unit 1 squares. Sew (1) 3" Fabric B square to each side of (1) Unit 1 square to make the top row. Repeat to make the bottom row. Sew (1) Unit 1 square to each side of (1) 3" Fabric A1 square to make the middle row. Sew together the (3) pieced rows to make (1) 8" Block One square (Diagram 2).

3. Repeat Steps 1-2 to make an additional (50) Block One squares.



Sparkle

4. Sew together (7) Block One squares to make Row One (Diagram 3).
5. Sew together (1) Block One square, (1) 8" x 15 1/2" Fabric B strip, (1) Block One square, (1) 8" x 15 1/2" Fabric B strip and (1) Block One square, in that order from left to right, to make Row Two (Diagram 3).
6. Sew together the (2) pieced rows from Steps 4-5. Sew (1) 22 3/4" Fabric B triangle to the right end of the newly strip to make the Top Row (Diagram 3).
7. Repeat Steps 4-6 to make the Bottom Row (Diagram 3).
8. Sew together (1) Block One square, (1) 8" Fabric B square and (7) Block One squares, in that order from left to right, to make Row One (Diagram 4).
9. Sew together (3) Block One squares, (1) 8" x 23" Fabric B strip, (1) Block One square, (1) 8" Fabric B square and (1) Block One square, in that order from left to right, to make Row Two (Diagram 4).
10. Sew together (5) Block One squares and (4) 8" Fabric B squares, alternating them from left to right, to make Row Three (Diagram 4).
11. Sew together (1) Block One square, (1) 8" Fabric B square, (1) Block One square, (1) 8" x 23" Fabric B strip and (3) Block One squares, in that order from left to right, to make Row Four (Diagram 4).
12. Sew together (7) Block One squares, (1) 8" Fabric B square and (1) Block One square, in that order from left to right, to make Row Five (Diagram 4).
13. Sew together the (5) pieced rows from Steps 8-12, lengthwise and in numerical order from top to bottom, to make the Middle Row (Diagram 4).



Sparkle

14. Sew together the Top Row, Middle Row and Bottom Row as shown to make the Quilt Center (Diagram 5).

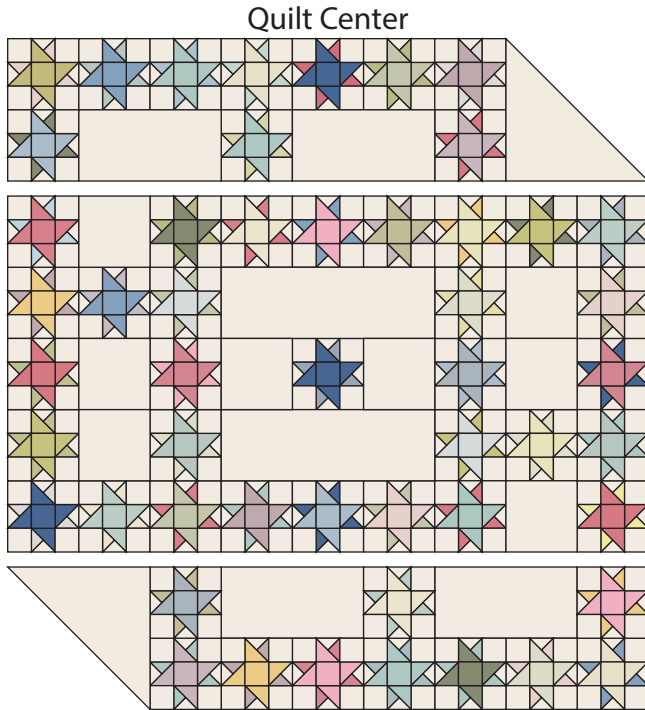


Diagram 5

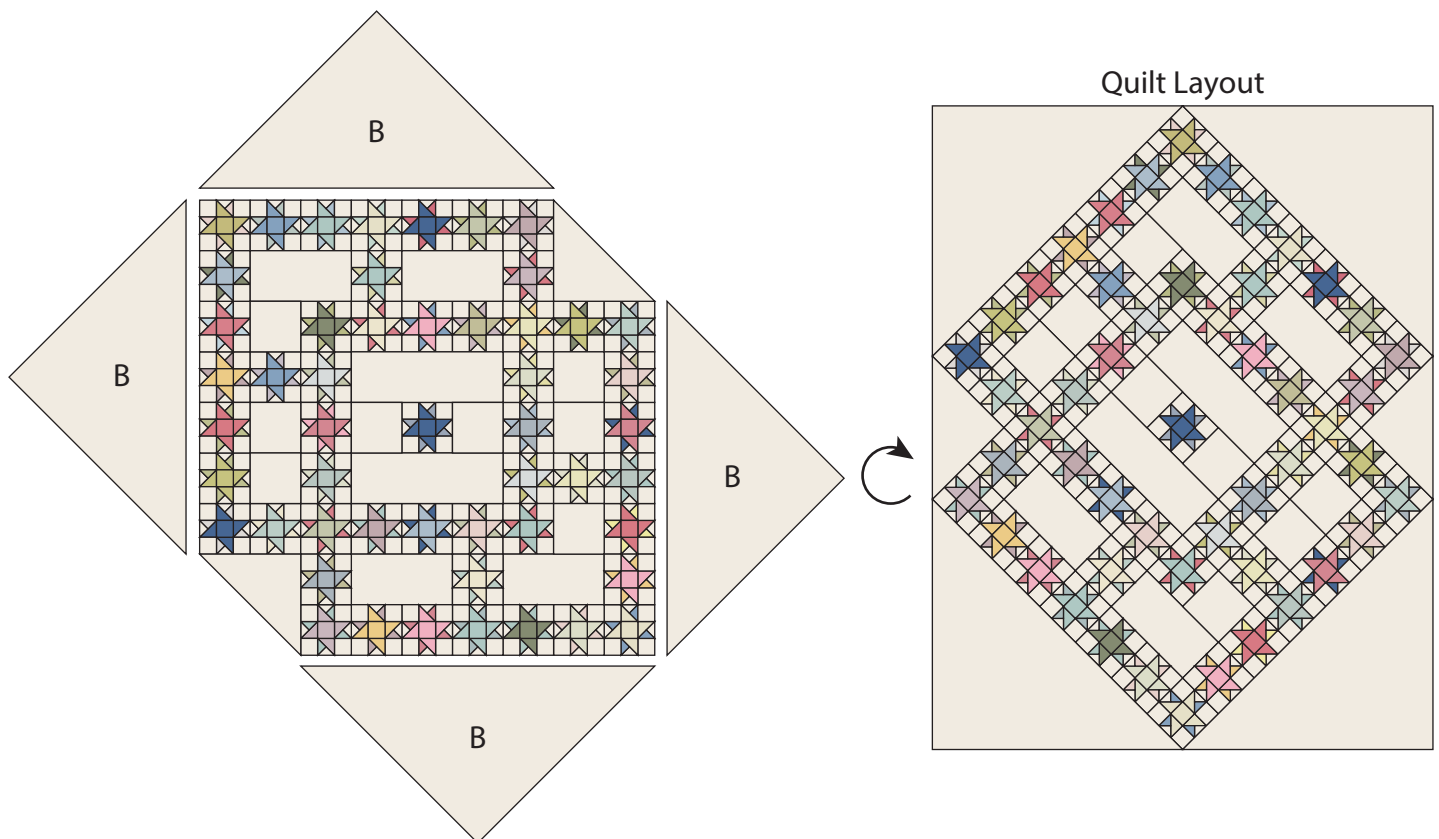
Quilt Top Assembly

(Refer to the Quilt Layout when assembling the quilt top.)

15. Sew (1) 38" Fabric B triangle to each of the four sides of the Quilt Center to make the Quilt Top.

Finishing the Quilt

11. Layer and quilt as desired.
12. Sew the (9) binding strips together, end to end with a 45-degree seams, to make the binding. Fold this long strip in half lengthwise with wrong sides together and press.
13. Bind as desired.

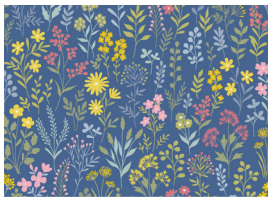


Sparkle

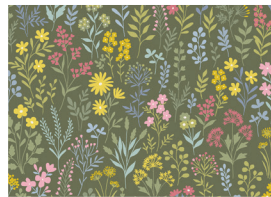
MAKOWER UK



Note: You will need (1) bundle of (30) Petite Fleur Fat Quarters in addition to the yardages listed below.



180-B



180-G



180-Q



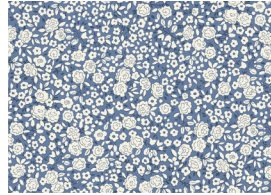
181-B



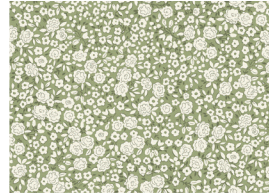
181-G



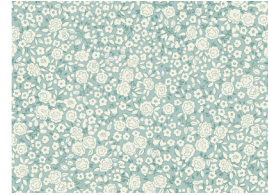
181-P



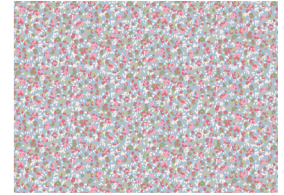
182-B



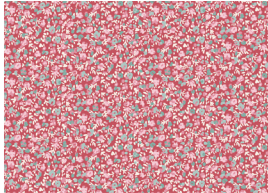
182-G



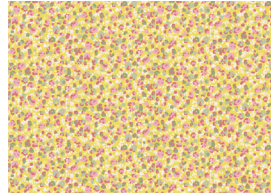
182-T



183-B



183-P



183-Y



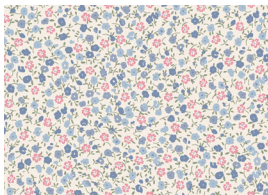
184-G
(backing) 6 yds



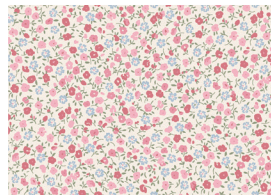
184-P



184-T



185-B



185-P



185-Y



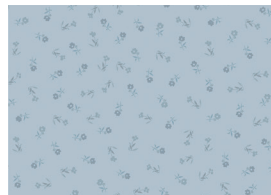
186-B



186-P



186-Y



187-B



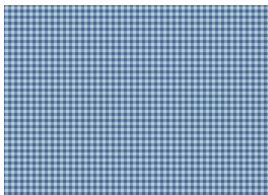
187-P



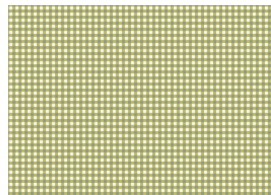
187-Q 6 yds



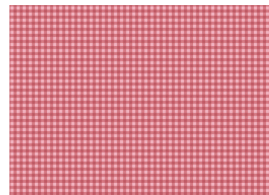
187-T



188-B



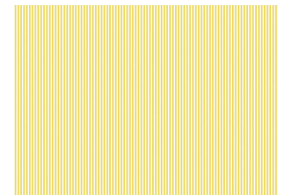
188-G



188-P



2088-G5 3/4 yd
(binding)



2088-Y

Bolts needed to cut project kits: 15 yds = 1 bolt

Fabrics shown at 100%.

andover • makower.uk

Free Pattern Download Available

1384 Broadway New York, NY 10018
Tel. (800) 223-5678 • andoverfabrics.com