



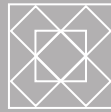
+



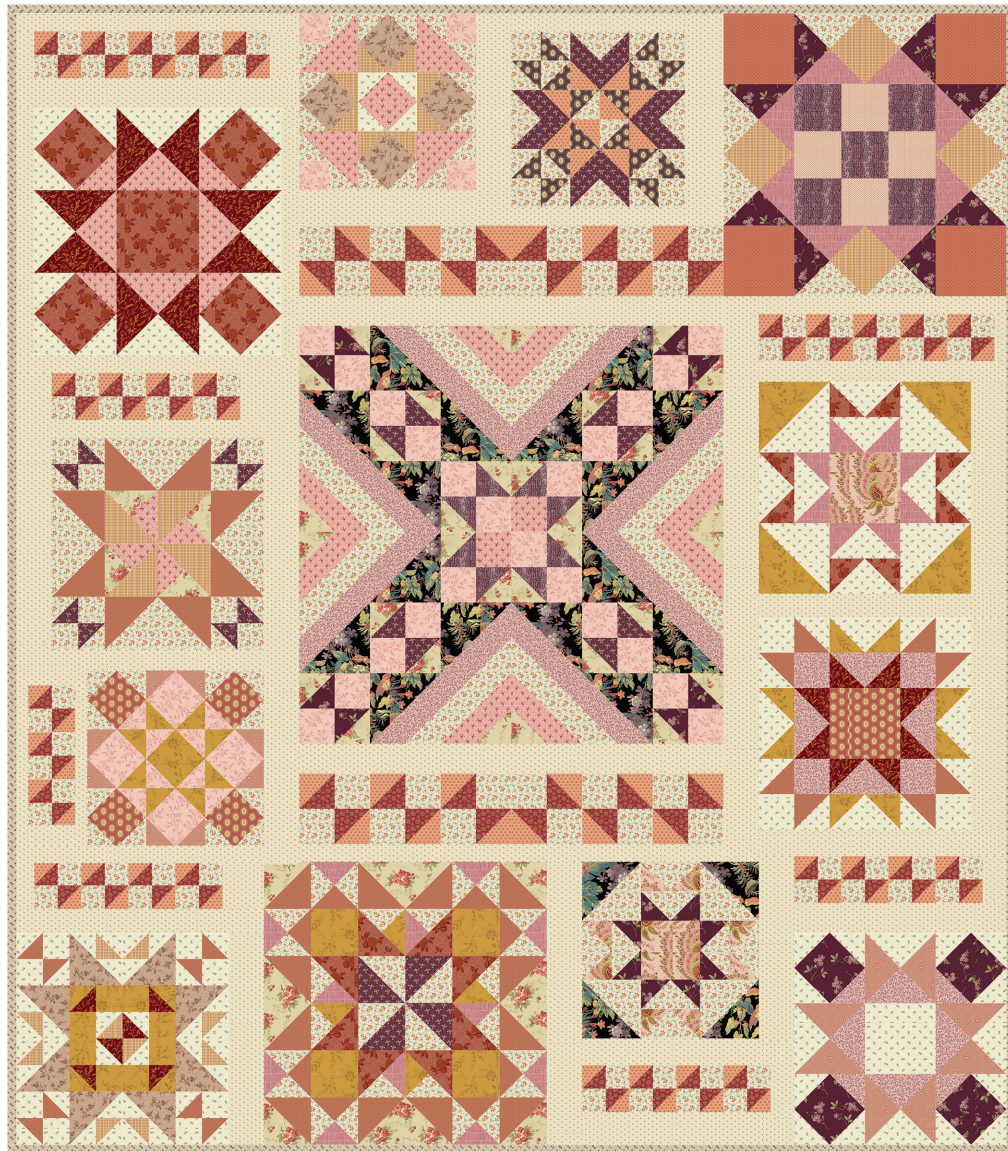
+



=



Twelve Month - BOM Shop Guide



Star Light, Star Bright (Amber) Quilt designed by: **Andover Design Team**

Finished Quilt Size: **84" x 96 1/2"** • Skill Level: **Advanced Beginner**

Fabric Collection: **Secret Stash Favorites by Edyta Sitar of Laundry Basket Quilts**

Star Light, Star Bright (Amber) - Shop Guide

OVERALL FABRIC REQUIREMENTS

SKU	FABRIC	MONTH(S) USED	1 KIT
10551-E	A	1, 4, 9	3/4 yd
10544-P	B	1, 3, 6, 8, 10	1 yd
10553-L	C	1, 7, 8	1 yd
10568-P	D	1, 5, 7	3/4 yd
10569-K	E	1, 10	3/4 yd
10549-E	F	1, 3, 5	1 yd
10543-L	G	1, 2, 4, 5, 6, 7, 8, 9, 10	3 yds
10568-E	H	1, 3, 4, 8	1 1/8 yds
10538-E	I	2, 5	7/8 yd
10548-R	J	2	5/8 yd
10554-O	K	3, 7, 10	5/8 yd
10537-R	L	3, 5, 11	5/8 yd
10557-L	M	3, 4, 5, 10, 11	1 7/8 yds
10552-E	N	3, 9	1/2 yd
10555-Y	O	4, 6, 8, 11	3/4 yd
10542-L	P	4, 11	1/2 yd
10567-P	Q	5	1/8 yd
10567-R	R	5, 9	1/2 yd
10566-Y	S	5, 7, 9, 10, 11	1 yd
10550-R	T	5, 7, 8, 11	3/4 yd
10558-O	U	6	1/4 yd
10559-E	V	6, 7, 10	5/8 yd
10561-P	W	1, 6	1/2 yd
10560-L	X	6	1/4 yd
10565-E	Y	10	1/4 yd
10562-L	Z	12	2 5/8 yds
10563-P	Binding	12	3/4 yd
10564-L	Backing (42")	12	7 3/4 yds

Star Light, Star Bright (Amber) - Shop Guide

MONTHLY FABRIC REQUIREMENTS

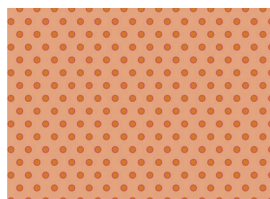
SKU	FABRIC	MONTHLY YARDAGES											
		1	2	3	4	5	6	7	8	9	10	11	12
10551-E	A	1/4			1/8					1/3			
10544-P	B	Fat 1/8		1/4			1/4		1/8		1/8		
10553-L	C	1/2						1/4	Fat 1/8				
10568-P	D	Fat 1/8				1/4		Fat 1/8					
10569-K	E	1/2									Fat 1/8		
10549-E	F	5/8		1/4		1/8							
10543-L	G	1/2	5/8		1/4	1/4	Fat 1/8	1/3	1/3	1/8	1/3		
10568-E	H	1/4		1/3	Fat 1/8				Fat 1/8				
10538-E	I		5/8			1/4							
10548-R	J		5/8										
10554-O	K			1/4				1/4			1/8		
10537-R	L			1/3		1/8						1/8	
10557-L	M			5/8	1/8	1/4					1/2	1/3	
10552-E	N			Fat 1/8						Fat 1/8			
10555-Y	O				1/8		Fat 1/8		Fat 1/8			1/8	
10542-L	P				1/4							1/4	
10567-P	Q					1/8							
10567-R	R					Fat 1/8				1/4			
10566-Y	S					1/8		1/4		1/4	Fat 1/8	1/8	
10550-R	T					1/8		1/4	1/4			1/8	
10558-O	U						1/4						
10559-E	V						1/4	1/4			1/8		
10561-P	W	Fat 1/8					Fat 1/8						
10560-L	X						Fat 1/8						
10565-E	Y										1/4		
10562-L	Z												2 5/8
10563-P	Binding												3/4
10564-L	Backing (42")												7 3/4

Secret Stash Favorites - Amber

EDYTA SITAR OF LAUNDRY BASKET QUILTS



L 10537-R



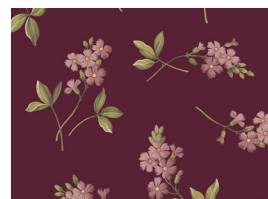
I 10538-E



P 10542-L



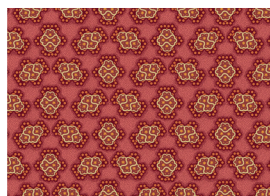
G 10543-L



B 10544-P



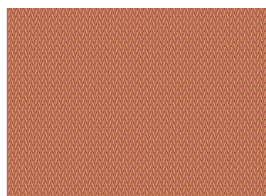
10545-Y



J 10548-R



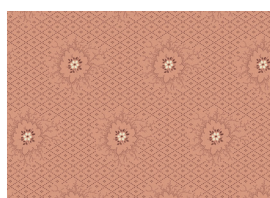
F 10549-E



T 10550-R



A 10551-E



N 10552-E



C 10553-L



K 10554-O



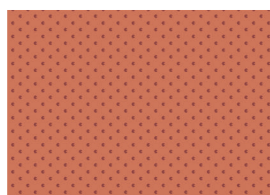
O 10555-Y



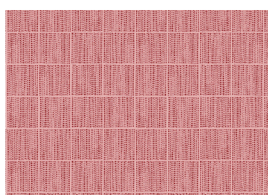
10556-L



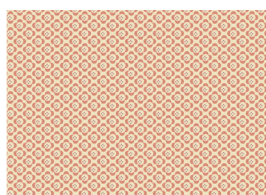
M 10557-L



U 10558-O



V 10559-E



X 10560-L



W 10561-P



Z 10562-L



10563-P



10564-L



Y 10565-E



S 10566-Y



Q 10567-P



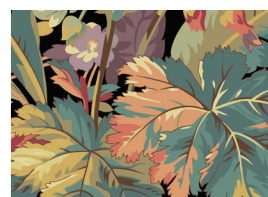
R 10567-R



H 10568-E



D 10568-P



E 10569-K

Bolts: 15 yds = 1 bolt

Fabrics shown 25% of actual size.

andover • makower.uk

Free Pattern Download Available

1384 Broadway New York, NY 10018

Tel. (800) 223-5678 • andoverfabrics.com