



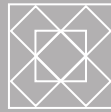
+



+



=



## Twelve Month - BOM Shop Guide



**Star Light, Star Bright (Blue Willow) Quilt** designed by: **Andover Design Team**

Finished Quilt Size: **84" x 96 1/2"** • Skill Level: **Advanced Beginner**

Fabric Collection: **Secret Stash Favorites by Edyta Sitar of Laundry Basket Quilts**

# Star Light, Star Bright (Blue Willow) - Shop Guide

## OVERALL FABRIC REQUIREMENTS

SKU	FABRIC	MONTH(S) USED	1 KIT
10573-B	A	1, 4, 9	3/4 yd
10579-B	B	1, 3, 6, 8, 10	1 yd
10576-L	C	1, 7, 8	1 yd
10564-B1	D	1, 5, 7	3/4 yd
10541-B	E	1, 10	3/4 yd
10577-B	F	1, 3, 5	1 1/4 yds
10583-L	G	1, 2, 4, 5, 6, 7, 8, 9, 10	3 yds
10584-B	H	1, 3, 4, 8	1 1/8 yds
10564-B	I	2, 5	5/8 yd
10572-B	J	2	5/8 yd
10571-G	K	3, 7, 10	5/8 yd
10575-B	L	3, 5, 11	5/8 yd
10585-L	M	3, 4, 10	1 yd
10580-B	N	3, 9	1/2 yd
10578-B	O	4, 6, 8, 11	3/4 yd
10570-B	P	4, 11	1/2 yd
10582-B	Q	8, 11	3/8 yd
10539-B	R	5, 9	1/2 yd
10586-B	S	5, 10, 11	3/4 yd
10546-B	T	5, 7	3/8 yd
10567-B	U	6	1/4 yd
10565-B	V	6, 7, 10	5/8 yd
10540-B	W	1, 6	1/2 yd
10541-L	X	6	1/4 yd
10569-L	Y	10	1/4 yd
10566-L	Z	12	2 5/8 yds
10581-L	AA	3, 5, 11	1 1/4 yds
10574-B	BB	7, 9	1/2 yd
10563-B	Binding	12	3/4 yd
10583-L	Backing (42")	12	7 3/4 yds

# Star Light, Star Bright (Blue Willow) - Shop Guide

## MONTHLY FABRIC REQUIREMENTS

SKU	FABRIC	MONTHLY YARDAGES											
		1	2	3	4	5	6	7	8	9	10	11	12
10573-B	A	1/4			1/8					1/3			
10579-B	B	Fat 1/8		1/4			1/4		1/8		1/8		
10576-L	C	1/3						1/4	1/4				
10564-B1	D	Fat 1/8				1/4		1/4					
10541-B	E	1/2									Fat 1/8		
10577-B	F	5/8		1/3		1/4							
10583-L	G	1/2	5/8		1/4	1/4	Fat 1/8	1/3	1/3	1/8	1/3		
10584-B	H	1/4		1/3	Fat 1/8				Fat 1/8				
10564-B	I		1/2			1/8							
10572-B	J		5/8										
10571-G	K			1/4				Fat 1/8			1/8		
10575-B	L			1/3		1/8						1/8	
10585-L	M			Fat 1/8	Fat 1/8						1/2		
10580-B	N			Fat 1/8						Fat 1/8			
10578-B	O				1/8		Fat 1/8		Fat 1/8			1/8	
10570-B	P				1/4							1/4	
10582-B	Q								1/4			1/8	
10539-B	R					1/4				1/4			
10586-B	S					Fat 1/8					1/4	1/4	
10546-B	T					1/8		1/4					
10567-B	U						1/4						
10565-B	V						Fat 1/8	Fat 1/8			1/8		
10540-B	W	Fat 1/8					Fat 1/8						
10541-L	X						Fat 1/8						
10569-L	Y										1/4		
10566-L	Z												2 5/8
10581-L	AA			2/3		1/4						1/3	
10574-B	BB							1/4		Fat 1/8			
10563-B	Binding												3/4
10583-L	Backing (42")												7 3/4

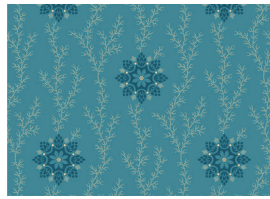
# Star Light, Star Bright - Blue Willow



## EDYTA SITAR OF LAUNDRY BASKET QUILTS



R 10539-B



W 10540-B



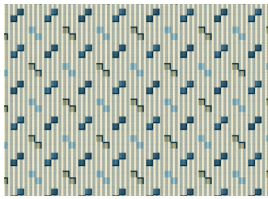
E 10541-B



X 10541-L



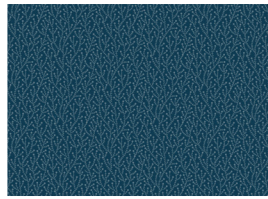
T 10546-B



10563-B



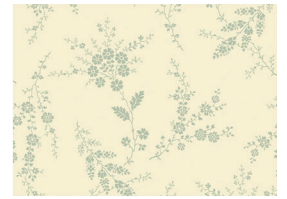
I 10564-B



D 10464-B1



V 10565-B



Z 10566-L



U 10567-B



Y 10569-L



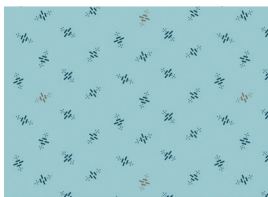
P 10570-B



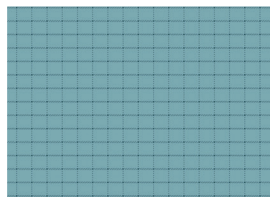
K 10571-G



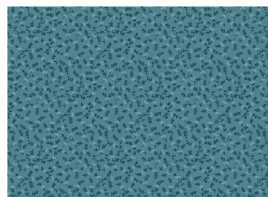
J 10572-B



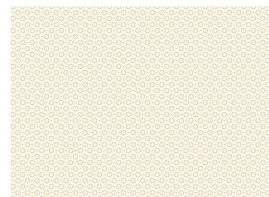
A 10573-B



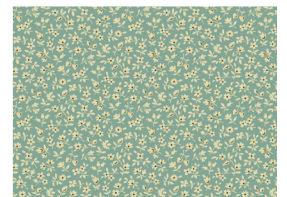
BB 10574-B



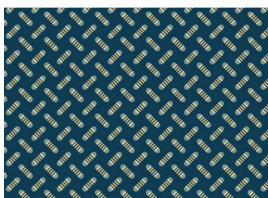
L 10575-B



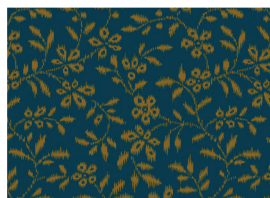
C 10576-L



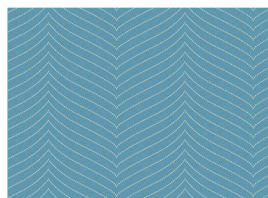
F 10577-B



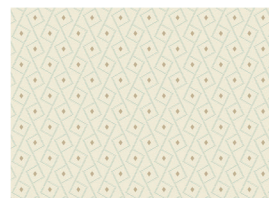
O 10578-B



B 10579-B



N 10580-B



AA 10581-L



Q 10582-B



G 10583-L



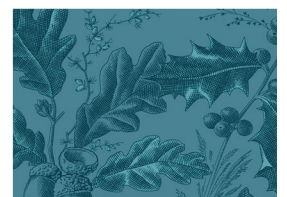
H 10584-B



10585-B



M 10585-L



S 10586-B

Bolts: 15 yds = 1 bolt

Fabrics shown 25% of actual size.

andover • [makower.uk](http://makower.uk)

Free Pattern Download Available

1384 Broadway New York, NY 10018  
Tel. (800) 223-5678 • [andoverfabrics.com](http://andoverfabrics.com)