

# ALWAYS ANDOVER PROJECTS



+



+



=



**Stripes Tote** Designed by: **Andover Design Team**

Tote Size: **16" x 14" x 5"** • Skill Level: **Confident Beginner**

# Stripes Tote



Featuring Red White and Blue by Andover Fabrics  
Tote designed by Andover Design Team

Tote finished 16" x 14" x 5"

## Tote Cutting Directions

**Note: Read assembly directions before cutting.**

Pieces are cut to exact length required plus ¼" seam allowance. WOF designates the width of fabric from selvedge to selvedge (approximately 42" wide).

- Fabric A** Cut (2) 2 ½" x 6 ½" strips.
- Fabric B** Cut (2) 2 ½" x 10 ½" strips.
- Fabric C** Cut (2) 2 ½" x 14 ½" strips.
- Fabric D** Cut (2) 2 ½" x 18 ½" strips.
- Fabric E** Cut (2) 2 ½" x 22 ½" strips.
- Fabric F** Cut (2) 2 ½" x 24 ½" strips.
- Fabric G** Cut (2) 2 ½" x 24 ½" strips.
- Fabric H** Cut (2) 2 ½" x 18 ½" strips.
- Fabric I** Cut (2) 2 ½" x 15 ½" strips.
- Fabric J** Cut (2) 2 ½" x 11 ½" strips.
- Fabric K** Cut (2) 2 ½" x 7 ½" strips.
- Fabric L** Cut (2) 17" x 21 ½" strips.
- Fabric M** Cut (1) 4" x WOF strip.
- Fabric N** Cut (1) 4" x WOF strip.

**Fusible Fleece** Cut (2) 17" x 21 ½" rectangles.

## Fabric Requirements

Tote	Yardage*	Fabric
<b>Fabric A</b> tote		10651-R
<b>Fabric B</b> tote		10652-L
<b>Fabric C</b> tote		10653-B
<b>Fabric D</b> tote		10652-R
<b>Fabric E</b> tote		10654-L
<b>Fabric F</b> tote		10656-B
<b>Fabric G</b> tote		10654-R
<b>Fabric H</b> tote		10651-L
<b>Fabric I</b> tote		10657-B
<b>Fabric J</b> tote		10653-R
<b>Fabric K</b> tote		10657-L
<b>Fabric L</b> lining	⅔ yard	10655-L
<b>Fabric M</b> handle	¼ yard	10652-B
<b>Fabric N</b> handle	¼ yard	10655-R

**Fusible Fleece** (2) 17" x 21 ½"

\* Fabrics A-K are from (1) 2 ½" strip pack.

## Making the Tote

1. Arrange and sew together (11) assorted strips as shown to make (1) sewn piece (Diagram 1). Repeat to make a second sewn piece.
2. Measure and mark a 17" x 21 ½" rectangle on an angle across one sewn piece. Cut out the rectangle to make the Front Panel (Diagram 1). Repeat to make the Back Panel.

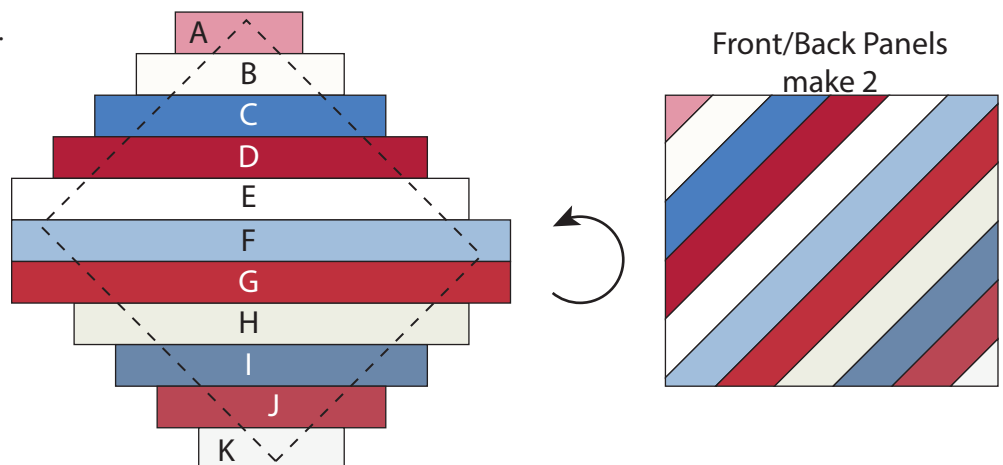
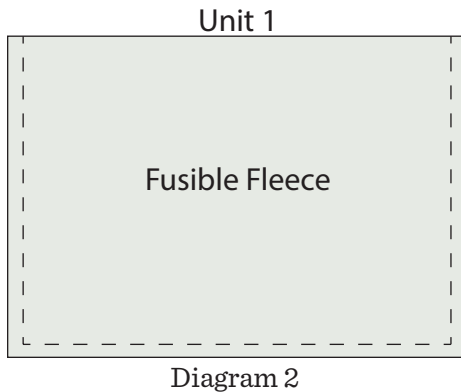


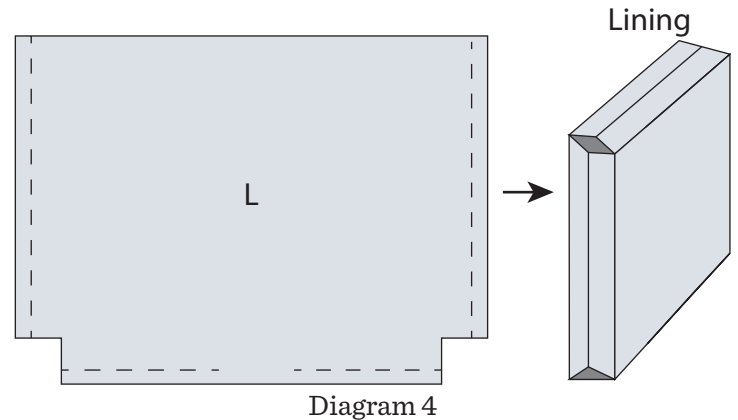
Diagram 1

# Stripes Tote

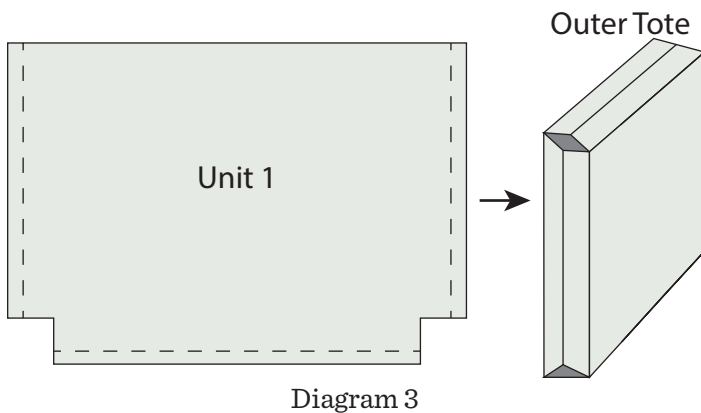
3. Following the manufacturer's instructions, press (1) 17" x 21 1/2" piece of Fusible Fleece to the wrong side of both the Front Panel and Back Panel. Quilt each panel as desired.
4. Place the Front Panel and Back Panel right sides together and sew down each side and across the bottom to make (1) Unit 1 rectangle (Diagram 2).



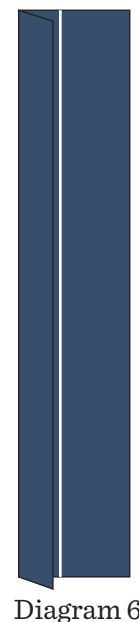
8. Place the (2) 17" x 21 1/2" Fabric L pieces right sides together and sew down each short side and across the bottom, leaving a 3" - 4" opening for turning (Diagram 4).
9. Repeat Steps 5-6 to cut and sew the box bottoms to make the Lining (Diagram 4). Note: Leave the Lining inside out at this time



5. Measure in from the side edge 2" and up from the bottom edge 2" at each bottom corner of the Unit 1 rectangle. Cut out the square of fabric (Diagram 3).
6. Open the cut bottom and align the bottom edge with the side edge and sew the two edges together to make the Outer Tote. (Diagram 3)



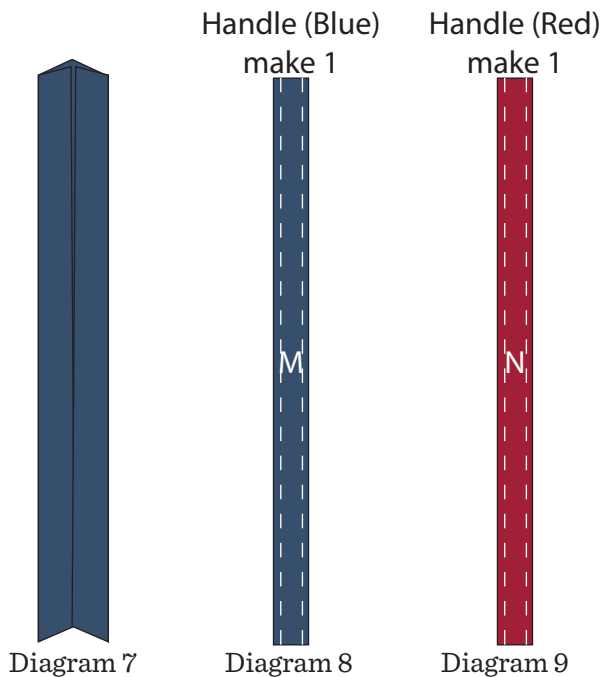
10. To make the handles, fold (1) 4" x WOF Fabric M strip in half lengthwise and press (Diagram 5). Open the folded fabric and fold each long edge to the creased centerline and press. (Diagram 6)



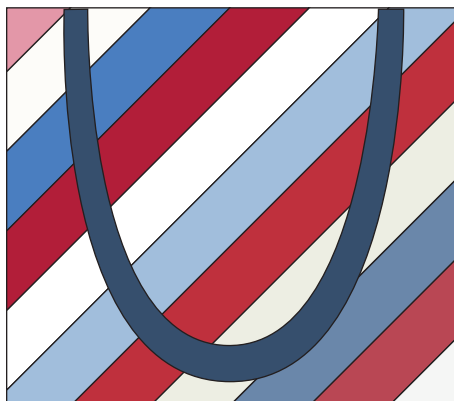
7. Turn Outer Tote right side out.

# Stripes Tote

11. Fold the pressed fabric in half again and press to make (1) 1" x WOF strip (Diagram 7). Top stitch down both long sides 1/8" in from the edge to make (1) Handle (Blue) (Diagram 8).
12. Repeat Steps 10-11 with (1) 4" x WOF fabric N strip to make (1) Handle (Red). (Diagram 9)



13. Pin (1) Handle to the Outer Tote front, measuring 4" in from each side edge aligning the raw edges. Repeat with the second Handle and Outer Tote back. Make sure the Handles are hanging down the right side of the bag while assembling (Diagram 10).



14. Place the Tote with Handles, right sides together with the Lining, aligning the top raw edges of the Tote, Handles and Lining and pin together. Sew the Lining and Tote together, reinforcing the stitching at each handle end.
15. Turn the Tote and Lining right side out through the opening in the Lining. Press as needed and top stitch the opening closed. Put the Lining into the Tote, aligning the sides and bottom (Diagram 11).

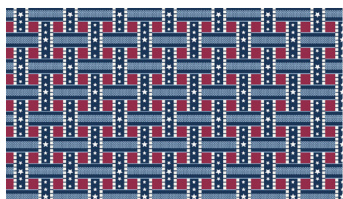


# Red White and Blue

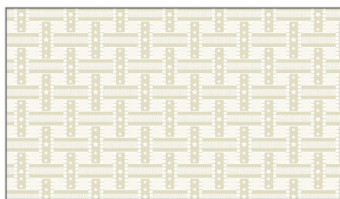


## ANDOVER FABRICS

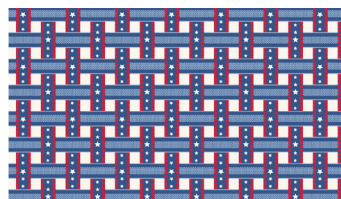
Note: You will need (1) 2 1/2" strip pack of (40) 2 1/2" strips in addition to the yardages listed below.



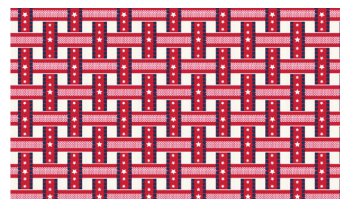
10651-B



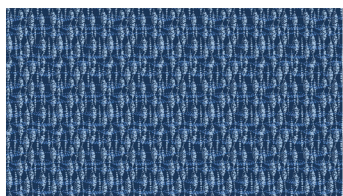
10651-L



10651-LB

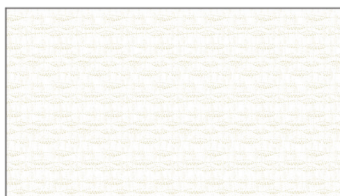


10651-R

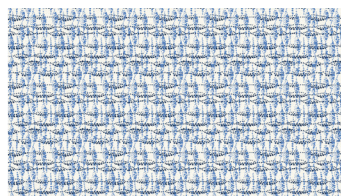


10652-B

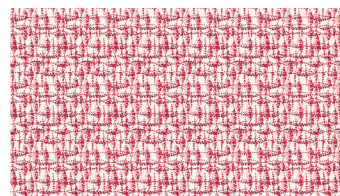
1/4 yd



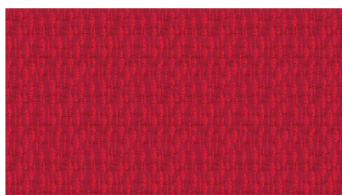
10652-L



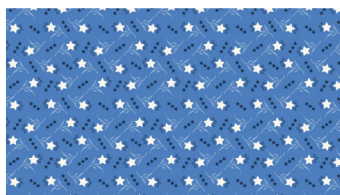
10652-LB



10652-LR



10652-R



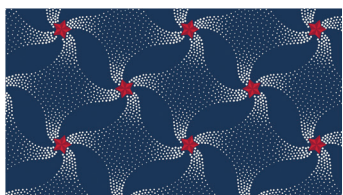
10653-B



10653-L



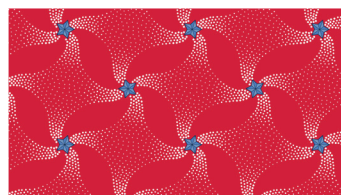
10653-R



10654-B



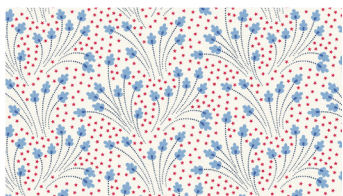
10654-L



10654-R

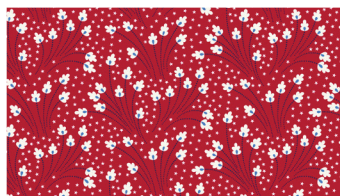


10655-B



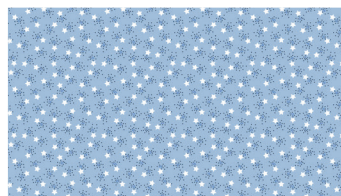
10655-L

2/3 yd

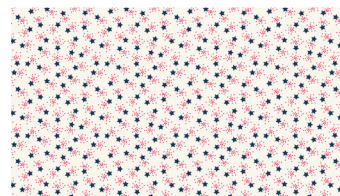


10655-R

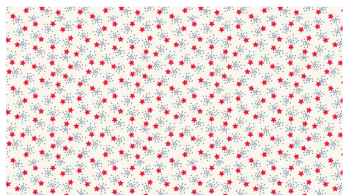
1/4 yd



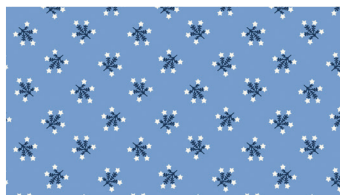
10656-B



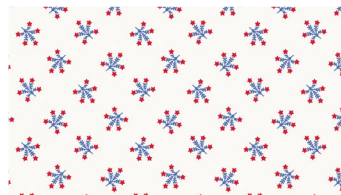
10656-L



10656-R



10657-B



10657-L



10657-R

Bolts needed to cut project kits: 15 yds = 1 bolt

Fabrics shown are 25% of actual size.

andover

•  
• [makower.uk](http://makower.uk)  
•

Free Pattern Download Available

1384 Broadway New York, NY 10018

Tel. (800) 223-5678 • [andoverfabrics.com](http://andoverfabrics.com)