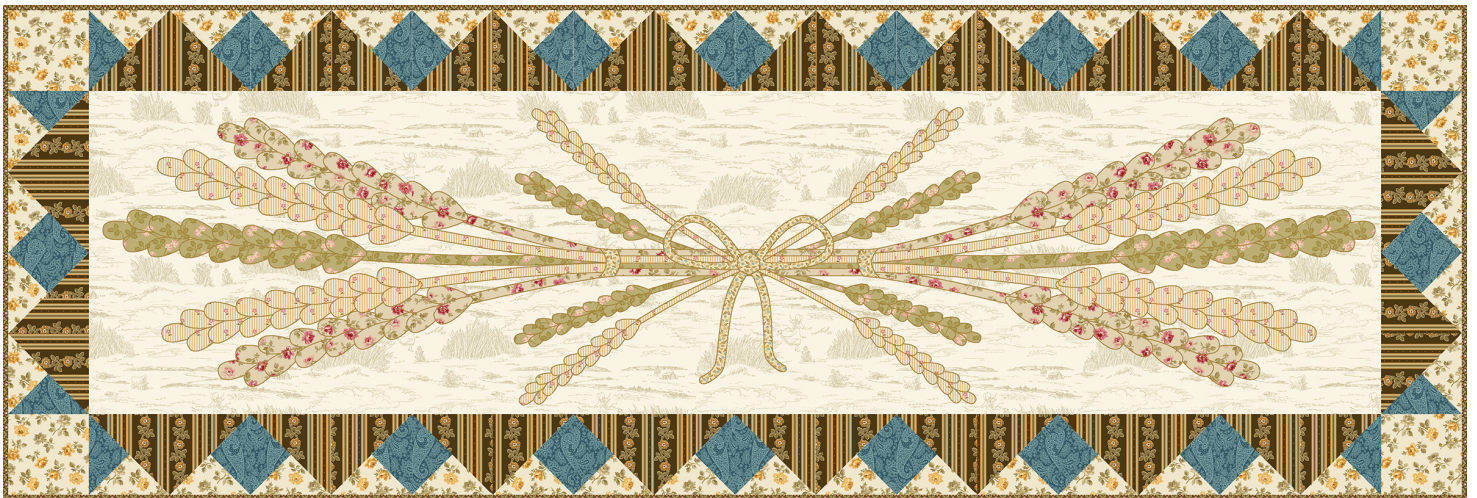


# ALWAYS ANDOVER PROJECTS



**Wheat and Honey** Runner designed by: **Andover Design Team**

Runner Size: **72" x 24"** • Skill Level: **Advanced Beginner**

LITTLE HOUSE ON THE PRAIRIE® and associated character names, designs, images and logos are trademarks or registered trademarks owned and licensed by Friendly Family Productions, LLC. ©2027 Friendly Family Productions, LLC. All rights reserved.

AndoverFabrics.com @AndoverFabrics #AlwaysAndover ©2026 Andover Fabrics. Free pattern for educational purposes only.

# Wheat and Honey



Featuring Andover Fabrics new collection: Plum Creek by Little House on the Prairie®

Runner designed by Andover Design Team

Runner finished 72" x 24"

## Runner Cutting Directions

**Note: Read assembly directions before cutting patches.** Fabrics are cut to exact length required plus ¼" seam allowance. WOF designates the width of fabric from selvedge to selvedge (approximately 42" wide).

**Fabric A** Cut (2) 16 ½" x WOF strips. Sew the strips together end to end and cut (1) 16 ½" x 64 ½" strip.

**Fabric B** Cut (20) Template 1 triangles.  
Cut (20) Template 2 triangles.

**Fabric C** Cut (2) 5 ¼" x WOF strips. Sub-cut the strips into (10) 5 ¼" squares. Cut the squares across both diagonals to make (40) 5 ¼" triangles.

**Fabric D** Cut (2) 5 ¼" x WOF strips. Sub-cut the strips into (10) 5 ¼" squares. Cut the squares across both diagonals to make (40) 5 ¼" triangles.  
Cut (1) 4 ½" x WOF strip. Sub-cut the strip into (4) 4 ½" squares.

**Fabric E** See instructions to cut (1) Large Wheat 2, (1 ) Large Wheat 4, (2) Small Wheat 1, (2) Small Wheat 2 and (1) Stem.

**Fabric F** See instructions to cut (2) Large Wheat 1, (2) Large Wheat 3 and (2) Stems.

**Fabric G** See instructions to cut (2) Large Wheat 1, (2) Large Wheat 3, (2) Small Wheat 1, (2) Small Wheat 2 and (1) Stem.

**Fabric H** See instructions to cut (1 set) Bow and (1 set) Bands.

**Binding** Cut (5) 2 ½" x WOF strips.

**Backing** Cut (1) 32" x 80" WOF strip.

## Fabric Requirements

Runner		Yardage	Fabric
<b>Fabric A</b>	<b>background</b>	1 yard	10694-L*
<b>Fabric B</b>	<b>blocks</b>	⅝ yard	10685-N
<b>Fabric C</b>	<b>blocks</b>	⅜ yard	10686-T
<b>Fabric D</b>	<b>blocks</b>	½ yard	10683-N
<b>Fabric E</b>	<b>wheat</b>	⅜ yard	10687-N
<b>Fabric F</b>	<b>wheat</b>	½ yard	10683-R
<b>Fabric G</b>	<b>wheat</b>	½ yard	10690-E
<b>Fabric H</b>	<b>bow &amp; bands</b>	¼ yard	10692-L
<b>Binding</b>		½ yard	10688-N
<b>Backing</b>		2 ⅓ yards	10681-N

You will also need: Fusible web

\* Icons Collection

## Making the Runner

**Note: Pay attention to the unit orientations when assembling the various components.**

### Block Assembly

#### 1. Block Assembly

Enlarge Applique Templates 400%.

- Following the manufacturer's instructions, trace the listed number of each template onto the paper side of the fusible web. Roughly cut out each template about ⅛" outside the drawn lines.
- Press each template onto the wrong side of the fabrics as listed on the templates. Cut out each template on the drawn lines.
- Arrange and press the (1) large wheat stalk, (8) small wheat stalks, (4) stems, (2) bands and (1) bow onto the 16 ½" x 64 ½" Fabric A strip (Diagram 1).
- Finish the raw edges of each shape with a decorative stitch such as a buttonhole or satin stitch to make the Runner Center (Diagram 1).

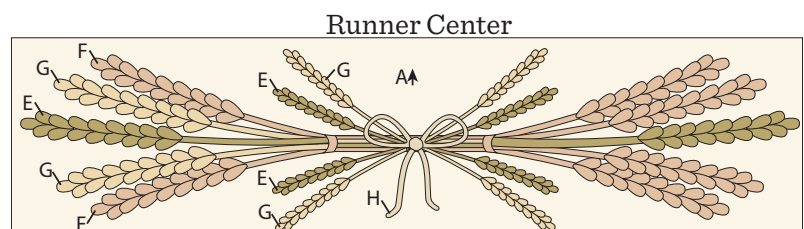


Diagram 1

# Wheat and Honey

6. Sew (1) 5 ¼" Fabric C triangle, (1) 5 ¼" Fabric D triangle and (1) Fabric B Template 1 triangle together to make (1) 4 ½" Unit 1 square (Diagram 2). Repeat to make an additional (19) Unit 1 squares.

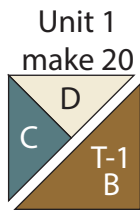


Diagram 2

7. Sew (1) 5 ¼" Fabric D triangle, (1) 5 ¼" Fabric C triangle and (1) Fabric B Template 2 triangle together to make (1) 4 ½" Unit 2 square (Diagram 3). Repeat to make an additional (19) Unit 2 squares.

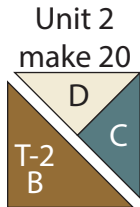


Diagram 3

8. Sew (1) Unit 1 square to the left side of (1) Unit 2 square, along the Fabric B sides, to make (1) 8 ½" x 4 ½" Block One rectangle (Diagram 4). Repeat to make an additional (19) Block One rectangles.

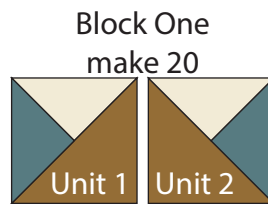


Diagram 4

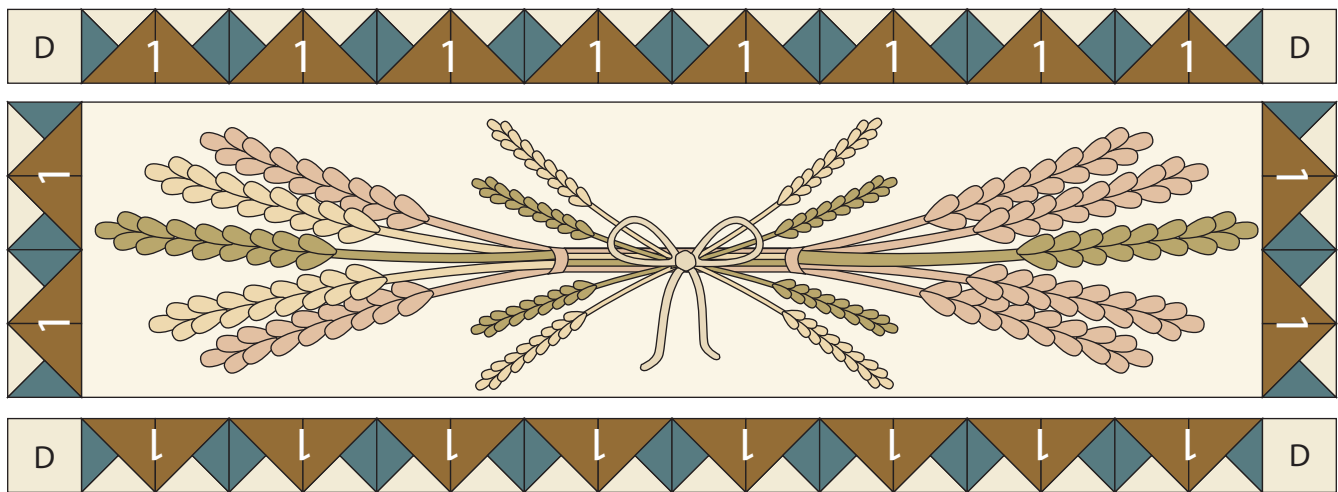
## Runner Top Assembly

(Refer to the Runner Layout when assembling the runner center.)

9. Sew together (2) Block One rectangles. Repeat to make a second strip. Sew (1) newly sewn strip to each side of the Runner Center.
10. Sew together (8) Block One rectangles end to end. Sew (1) 4 ½" Fabric D square to each end of the newly sewn strip to make the 4 ½" x 72 ½" Top Border. Repeat to make the Bottom Border. Sew the Top Border and Bottom Border to the top and bottom of the Runner Center to make the Runner Top.

## Finishing the Runner

11. Layer and quilt as desired.
12. Sew together the (5) binding strips end to end with 45-degree seams. Fold this long strip in half lengthwise with wrong sides together and press.
13. Bind as desired.

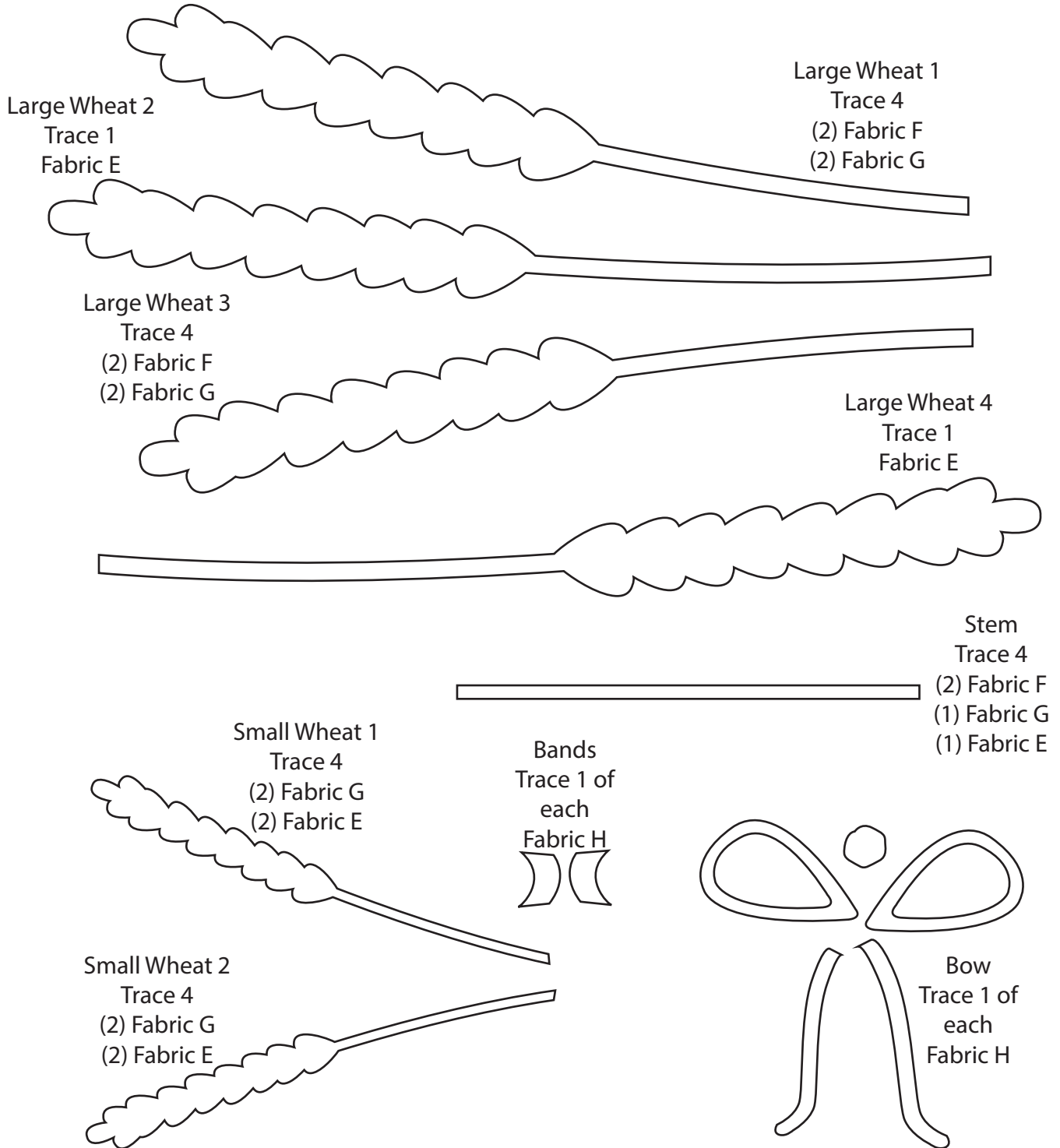


Runner Layout

# Wheat and Honey

Applique Templates  
 Reversed for Fusible Applique  
**ENLAGE 400%**

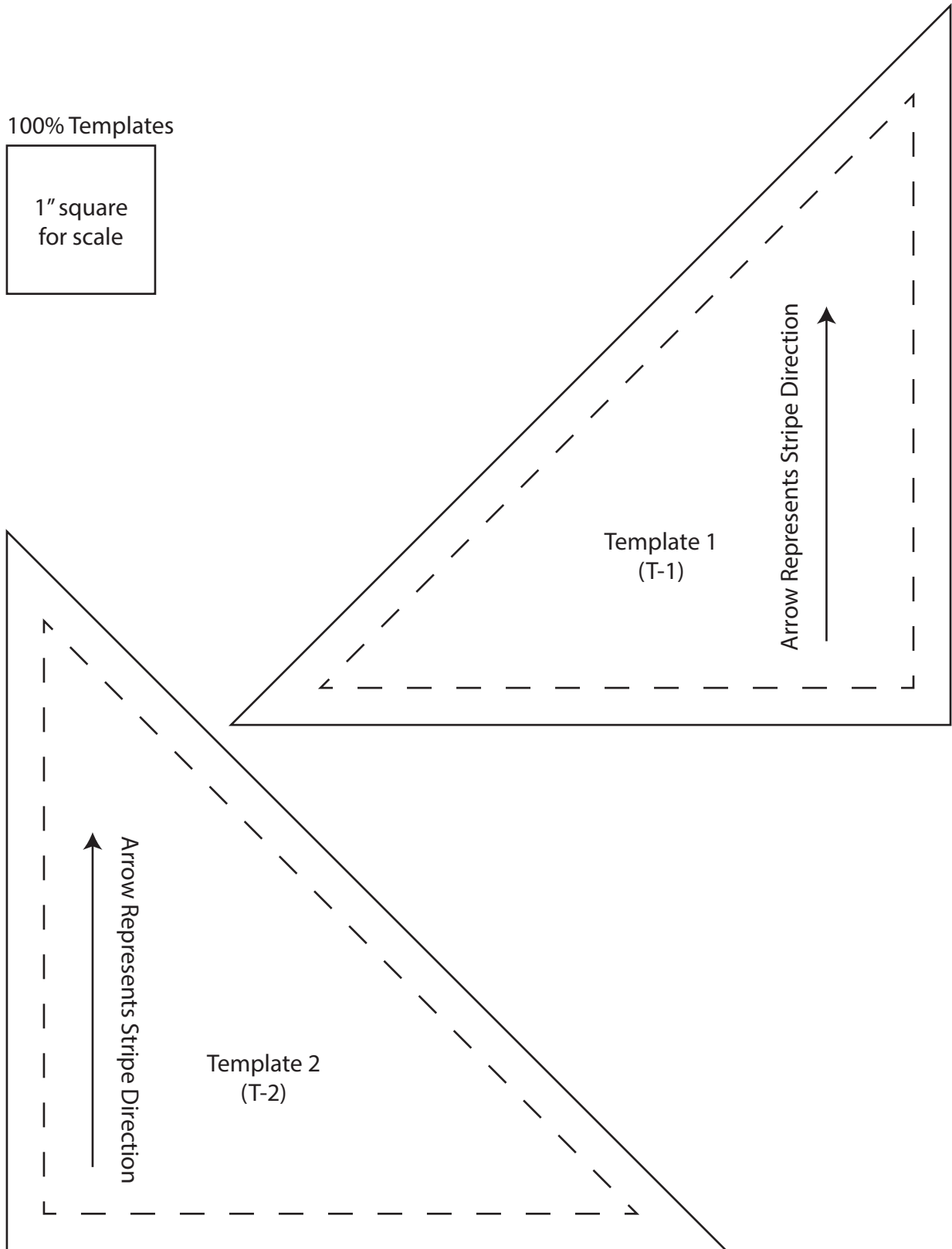
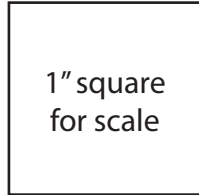
□ Square should  
 measure 1" **AFTER**  
 enlarging templates 400%



# Wheat and Honey

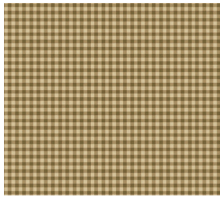
---

100% Templates

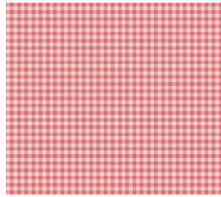


# Plum Creek by Little House on the Prairie®

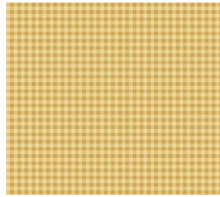
## ANDOVER FABRICS



10681-N 2 1/3 yds  
(backing)



10681-R



10681-Y



10683-B



10683-N 1/2 yd



10683-R 1/2 yd



10684-B



10684-E



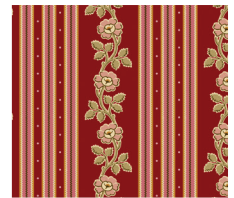
10684-N



10685-B



10685-N 5/8 yd



10685-R



10686-N



10686-R



10686-T 3/8 yd



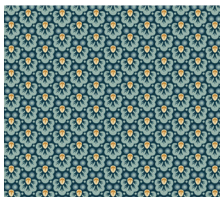
10687-B



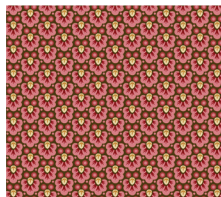
10687-E



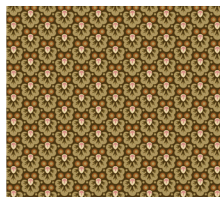
10687-N 3/8 yd



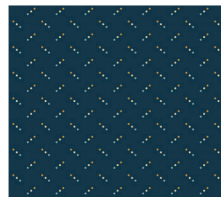
10688-B



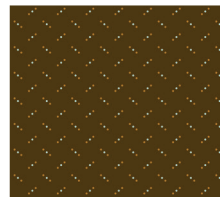
10688-E



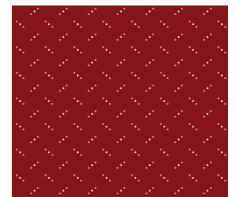
10688-N 1/2 yd  
(binding)



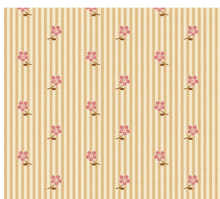
10689-B



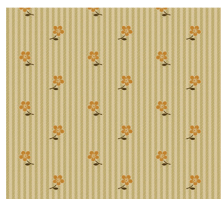
10689-N



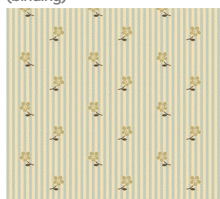
10689-R



10690-E 1/2 yd



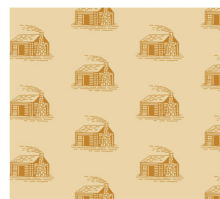
10690-N



10690-T



10691-E



10691-N



10691-T



10692-E



10692-L 1/4 yd



10692-T



10694-L\*

1 yd

Bolts needed to cut project kits: 15 yds = 1 bolt

Fabrics shown are 25% of actual size.

\* Icons Collection

andover • makower uk

Free Pattern Download Available

1384 Broadway New York, NY 10018  
Tel. (800) 223-5678 • andoverfabrics.com