

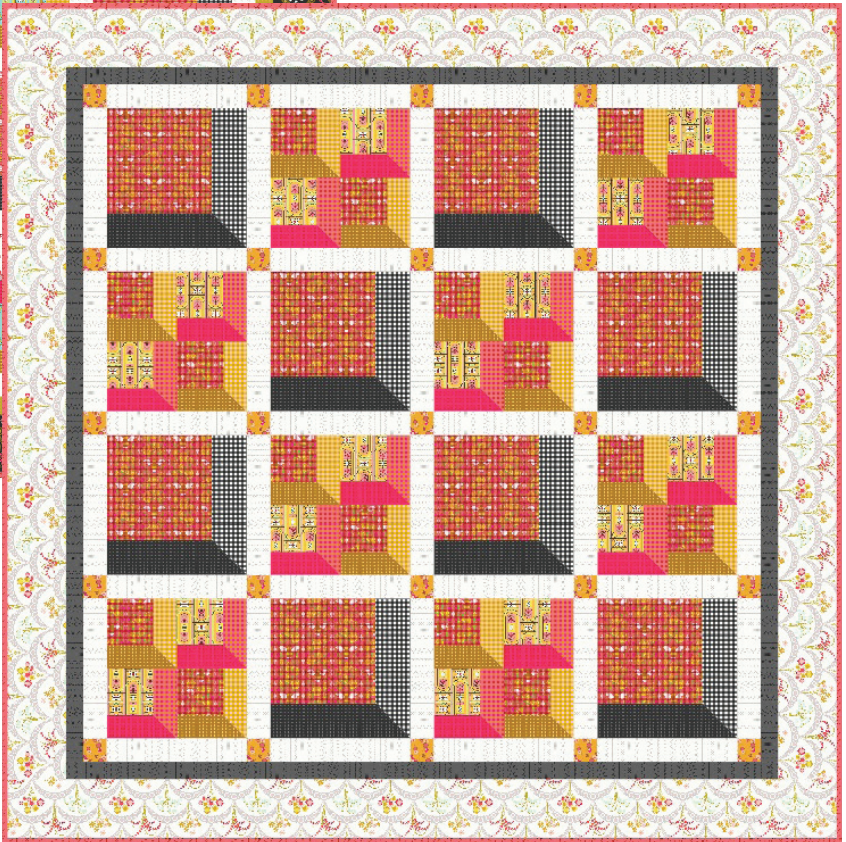
ALWAYS ANDOVER PROJECTS



Dark Version



Light Version



Windows Quilt designed by: **Alison Glass**

Quilt Size: **71" x 71"** • Skill Level: **Confident Beginner**

Windows



Featuring Andover Fabrics new collection: Jinny by Alison Glass

Quilt designed by Alison Glass

Quilt finished 71" x 71"

Quilt Cutting Directions (Dark Version)

Note: Read assembly directions before cutting patches. Borders are cut to exact length required plus ¼" seam allowance. WOF designates the width of fabric from selvedge to selvedge (approximately 42" wide).

- Fabric A** Cut (1) 2 7/8" x WOF strip. Sub-cut the strip into (8) 2 7/8" squares.
Cut (2) 2 1/2" x WOF strips. Sub-cut the strips into (16) 2 1/2" x 4 1/2" strips.
- Fabric B** Cut (1) 3 7/8" x WOF strip. Sub-cut the strip into (4) 3 7/8" squares.
Cut (2) 3 1/2" x WOF strips. Sub-cut the strips into (8) 3 1/2" x 9 1/2" strips.
- Fabric C** Cut (1) 2 7/8" x WOF strip. Sub-cut the strip into (8) 2 7/8" squares.
Cut (2) 2 1/2" x WOF strips. Sub-cut the strips into (16) 2 1/2" x 4 1/2" strips.
- Fabric D** Cut (2) 2 1/2" x WOF strips. Sub-cut the strips into (25) 2 1/2" squares.
- Fabric E** Cut (14) 2 1/2" x WOF strips. Sub-cut the strips into (40) 2 1/2" x 12 1/2" strips.
- Fabric F** Cut (8) 2 1/2" x WOF strips for the binding.
- Fabric G** Cut (1) 3 7/8" x WOF strip. Sub-cut the strip into (4) 3 7/8" squares.
Cut (2) 3 1/2" x WOF strips. Sub-cut the strips into (8) 3 1/2" x 9 1/2" strips.
- Fabric H** Cut (1) 2 7/8" x WOF strip. Sub-cut the strip into (8) 2 7/8" squares.
Cut (2) 2 1/2" x WOF strips. Sub-cut the strips into (16) 2 1/2" x 4 1/2" strips.

Fabric Requirements (Dark Version)

Quilt		Yardage	Fabric
Fabric A	blocks	1/3 yard	10328-E
Fabric B	blocks	3/8 yard	10328-K
Fabric C	blocks	1/3 yard	10328-Y
Fabric D	cornerstones	1/4 yard	10329-K
Fabric E	sashing	1 1/8 yards	10329-L
Fabric F	binding	2/3 yard	10329-R
Fabric G	blocks	3/8 yard	10331-K
Fabric H	blocks	1/3 yard	10331-R
Fabric I	blocks	1/3 yard	10331-Y
Fabric J	blocks	2/3 yard	10333-R
Fabric K	blocks	3/8 yard	10334-R
Fabric L	blocks	3/8 yard	10335-T
Fabric M	borders	1/2 yard	10331-Y1
Fabric N	borders	1 1/3 yards	10332-K
Backing		4 1/2 yards	(Your Choice - 42")
Backing		2 1/4 yards	(Your Choice - 108")

- Fabric I** Cut (1) 2 7/8" x WOF strip. Sub-cut the strip into (8) 2 7/8" squares.
Cut (2) 2 1/2" x WOF strips. Sub-cut the strips into (16) 2 1/2" x 4 1/2" strips.
- Fabric J** Cut (2) 9 1/2" x WOF strips. Sub-cut the strips into (8) 9 1/2" squares.
- Fabric K** Cut (2) 4 1/2" x WOF strips. Sub-cut the strips into (16) 4 1/2" squares.
- Fabric L** Cut (2) 4 1/2" x WOF strips. Sub-cut the strips into (16) 4 1/2" squares.
- Fabric M** Cut (4) 2" x WOF strips. Sew the strips together end to end with diagonal seams and cut (2) 2" x 61 1/2" strips.
Cut (3) 2" x WOF strips. Sew the strips together end to end with diagonal seams and cut (2) 2" x 58 1/2" strips.
- Fabric N** Cut (4) 5 1/2" x WOF strips. Sew the strips together end to end with diagonal seams and cut (2) 5 1/2" x 71 1/2" strips.
Cut (4) 5 1/2" x WOF strips. Sew the strips together end to end with diagonal seams and cut (2) 5 1/2" x 61 1/2" strips.
- Backing** Cut (2) 79" x WOF strips. Sew the strips together and trim to make (1) 79" x 79" backing.

Windows

Quilt Cutting Directions (Light Version)

Note: Read assembly directions before cutting patches. Borders are cut to exact length required plus $\frac{1}{4}$ " seam allowance. WOF designates the width of fabric from selvedge to selvedge (approximately 42" wide).

- Fabric A** Cut (1) $2\frac{7}{8}$ " x WOF strip. Sub-cut the strip into (8) $2\frac{7}{8}$ " squares.
Cut (2) $2\frac{1}{2}$ " x WOF strips. Sub-cut the strips into (16) $2\frac{1}{2}$ " x $4\frac{1}{2}$ " strips.
- Fabric B** Cut (1) $3\frac{7}{8}$ " x WOF strip. Sub-cut the strip into (4) $3\frac{7}{8}$ " squares.
Cut (2) $3\frac{1}{2}$ " x WOF strips. Sub-cut the strips into (8) $3\frac{1}{2}$ " x $9\frac{1}{2}$ " strips.
- Fabric C** Cut (1) $2\frac{7}{8}$ " x WOF strip. Sub-cut the strip into (8) $2\frac{7}{8}$ " squares.
Cut (2) $2\frac{1}{2}$ " x WOF strips. Sub-cut the strips into (16) $2\frac{1}{2}$ " x $4\frac{1}{2}$ " strips.
- Fabric D** Cut (4) 2" x WOF strips. Sew the strips together end to end with diagonal seams and cut (2) 2" x $61\frac{1}{2}$ " strips.
Cut (3) 2" x WOF strips. Sew the strips together end to end with diagonal seams and cut (2) 2" x $58\frac{1}{2}$ " strips.
- Fabric E** Cut (14) $2\frac{1}{2}$ " x WOF strips. Sub-cut the strips into (40) $2\frac{1}{2}$ " x $12\frac{1}{2}$ " strips.
- Fabric F** Cut (8) $2\frac{1}{2}$ " x WOF strips for the binding.
- Fabric G** Cut (1) $3\frac{7}{8}$ " x WOF strip. Sub-cut the strip into (4) $3\frac{7}{8}$ " squares.
Cut (2) $3\frac{1}{2}$ " x WOF strips. Sub-cut the strips into (8) $3\frac{1}{2}$ " x $9\frac{1}{2}$ " strips.
- Fabric H** Cut (1) $2\frac{7}{8}$ " x WOF strip. Sub-cut the strip into (8) $2\frac{7}{8}$ " squares.
Cut (2) $2\frac{1}{2}$ " x WOF strips. Sub-cut the strips into (16) $2\frac{1}{2}$ " x $4\frac{1}{2}$ " strips.

Fabric Requirements (Light Version)

Quilt		Yardage	Fabric
Fabric A	blocks	$\frac{1}{3}$ yard	10328-E
Fabric B	blocks	$\frac{3}{8}$ yard	10328-K
Fabric C	blocks	$\frac{1}{3}$ yard	10328-Y
Fabric D	borders	$\frac{1}{2}$ yard	10329-K
Fabric E	sashing	$1\frac{1}{8}$ yards	10329-L
Fabric F	binding	$\frac{2}{3}$ yard	10329-R
Fabric G	blocks	$\frac{3}{8}$ yard	10331-K
Fabric H	blocks	$\frac{1}{3}$ yard	10331-R
Fabric I	blocks	$\frac{1}{3}$ yard	10331-Y
Fabric J	blocks	$\frac{7}{8}$ yard	10333-R
Fabric K	blocks	$\frac{3}{8}$ yard	10335-Y1
Fabric L	cornerstones	$\frac{1}{4}$ yard	10330-O
Fabric M	borders	$1\frac{1}{3}$ yards	10332-L
Backing		$4\frac{1}{2}$ yards	(Your Choice - 42")
Backing		$2\frac{1}{4}$ yards	(Your Choice - 108")

- Fabric I** Cut (1) $2\frac{7}{8}$ " x WOF strip. Sub-cut the strip into (8) $2\frac{7}{8}$ " squares.
Cut (2) $2\frac{1}{2}$ " x WOF strips. Sub-cut the strips into (16) $2\frac{1}{2}$ " x $4\frac{1}{2}$ " strips.
- Fabric J** Cut (2) $9\frac{1}{2}$ " x WOF strips. Sub-cut the strips into (8) $9\frac{1}{2}$ " squares.
Cut (2) $4\frac{1}{2}$ " x WOF strips. Sub-cut the strips into (16) $4\frac{1}{2}$ " squares.
- Fabric K** Cut (2) $4\frac{1}{2}$ " x WOF strips. Sub-cut the strips into (16) $4\frac{1}{2}$ " squares.
- Fabric L** Cut (2) $2\frac{1}{2}$ " x WOF strips. Sub-cut the strips into (25) $2\frac{1}{2}$ " squares.
- Fabric M** Cut (4) $5\frac{1}{2}$ " x WOF strips. Sew the strips together end to end with diagonal seams and cut (2) $5\frac{1}{2}$ " x $71\frac{1}{2}$ " strip.
Cut (4) $5\frac{1}{2}$ " x WOF strips. Sew the strips together end to end with diagonal seams and cut (2) $5\frac{1}{2}$ " x $61\frac{1}{2}$ " strips.
- Backing** Cut (2) 79" x WOF strips. Sew the strips together and trim to make (1) 79" x 79" backing.

Windows

Making the Quilt

Note: The arrows in diagrams represent the fabric print direction. Pay attention to the fabric and unit orientations when assembling the various components.

Block One Assembly (Both Versions):

1. Place (1) $3\frac{7}{8}$ " Fabric G square on top of (1) $3\frac{7}{8}$ " Fabric B square, right sides together. Draw a line across the diagonal of the top square (Diagram 1). Sew $\frac{1}{4}$ " away from each side of the drawn diagonal line (Diagram 1). Cut the (2) squares apart on the drawn diagonal line (Diagram 2) to make (2) half-square triangles. Trim the half-square triangles to measure $3\frac{1}{2}$ " square to make (2) Unit 1 squares (Diagram 3). Repeat to make an additional (6) Unit 1 squares.

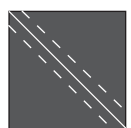


Diagram 1



Diagram 2

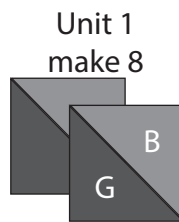


Diagram 3

2. Repeat Step 1 and refer to Diagram 4 for fabric identification and placement while using (8) $2\frac{7}{8}$ " Fabric I squares and (8) $2\frac{7}{8}$ " Fabric C squares to make (16) $2\frac{1}{2}$ " Unit 2 squares.

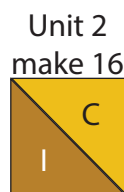


Diagram 4

3. Repeat Step 1 and refer to Diagram 5 for fabric identification and placement while using (8) $2\frac{7}{8}$ " Fabric H squares and (8) $2\frac{7}{8}$ " Fabric A squares to make (16) $2\frac{1}{2}$ " Unit 3 squares.

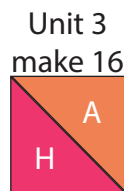


Diagram 5

4. Sew (1) $3\frac{1}{2}$ " x $9\frac{1}{2}$ " Fabric B strip to the right side of (1) $9\frac{1}{2}$ " Fabric J square to make the top row (Diagram 6). Sew (1) Unit 1 square to the right end of (1) $3\frac{1}{2}$ " x $9\frac{1}{2}$ " Fabric G strip to make the bottom row (Diagram 6). Sew together the (2) rows to make (1) $12\frac{1}{2}$ " Block One square (Diagram 6). Repeat to make an additional (7) Block One squares.

Block One
make 8

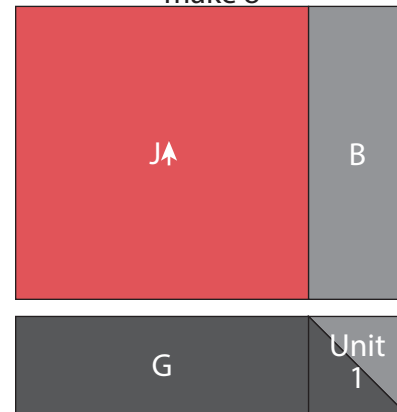


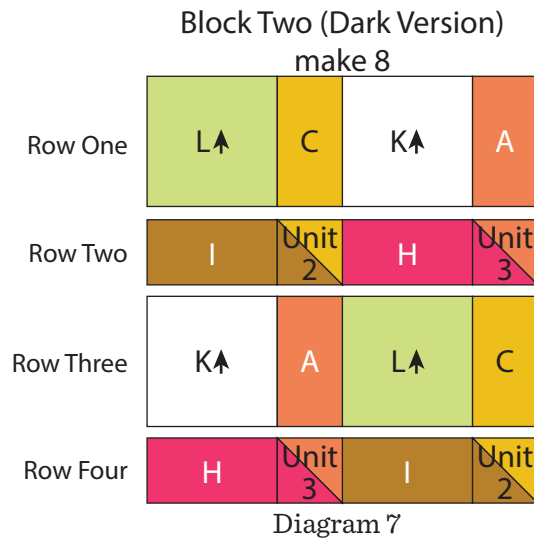
Diagram 6

Block Two Assembly (Dark Version):

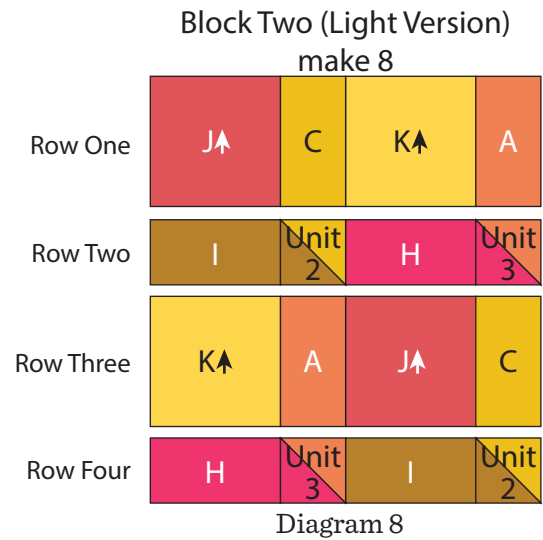
5. Sew together (1) $4\frac{1}{2}$ " Fabric L square, (1) $2\frac{1}{2}$ " x $4\frac{1}{2}$ " Fabric C strip, (1) $4\frac{1}{2}$ " Fabric K square and (1) $2\frac{1}{2}$ " x $4\frac{1}{2}$ " Fabric A strip, in that order from left to right, to make Row One (Diagram 7).
6. Sew together (1) $2\frac{1}{2}$ " x $4\frac{1}{2}$ " Fabric I strip, (1) Unit 2 square, (1) $2\frac{1}{2}$ " x $4\frac{1}{2}$ " Fabric H strip and (1) Unit 3 square, in that order from left to right, to make Row Two (Diagram 7).
7. Sew together (1) $4\frac{1}{2}$ " Fabric K square, (1) $2\frac{1}{2}$ " x $4\frac{1}{2}$ " Fabric A strip, (1) $4\frac{1}{2}$ " Fabric L square and (1) $2\frac{1}{2}$ " x $4\frac{1}{2}$ " Fabric C strip, in that order from left to right, to make Row Three (Diagram 7).
8. Sew together (1) $2\frac{1}{2}$ " x $4\frac{1}{2}$ " Fabric H strip, (1) Unit 3 square, (1) $2\frac{1}{2}$ " x $4\frac{1}{2}$ " Fabric I strip and (1) Unit 2 square, in that order from left to right, to make Row Four (Diagram 7).
9. Sew together the (4) pieced Rows, lengthwise and in numerical order from top to bottom, to make (1) $12\frac{1}{2}$ " Block Two (Dark Version) square (Diagram 7).

Windows

10. Repeat Steps 5-9 to make (7) additional Block Two (*Dark Version*) squares.



16. Repeat Steps 11-15 to make (7) additional Block Two (*Light Version*) squares.



Block Two Assembly (*Light Version*):

11. Sew together (1) 4 ½" Fabric J square, (1) 2 ½" x 4 ½" Fabric C strip, (1) 4 ½" Fabric K square and (1) 2 ½" x 4 ½" Fabric A strip, in that order from left to right, to make Row One (Diagram 8).
12. Sew together (1) 2 ½" x 4 ½" Fabric I strip, (1) Unit 2 square, (1) 2 ½" x 4 ½" Fabric H strip and (1) Unit 3 square, in that order from left to right, to make Row Two (Diagram 8).
13. Sew together (1) 4 ½" Fabric K square, (1) 2 ½" x 4 ½" Fabric A strip, (1) 4 ½" Fabric J square and (1) 2 ½" x 4 ½" Fabric C strip, in that order from left to right, to make Row Three (Diagram 8).
14. Sew together (1) 2 ½" x 4 ½" Fabric H strip, (1) Unit 3 square, (1) 2 ½" x 4 ½" Fabric I strip and (1) Unit 2 square, in that order from left to right, to make Row Four (Diagram 8).
15. Sew together the (4) pieced Rows, lengthwise and in numerical order from top to bottom, to make (1) 12 ½" Block Two (*Light Version*) square (Diagram 8).

Quilt Top Assembly

(Refer to the Quilt Layout of your choice (*Dark or Light*) when assembling the quilt top.)

Quilt Center Assembly (*Dark Version*):

17. Sew together (5) 2 ½" Fabric D squares and (4) 2 ½" x 12 ½" Fabric E strips, alternating them from left to right, to make Row One (Diagram 9). Repeat to make Row Three, Row Five, Row Seven and Row Nine.
18. Sew together (1) 2 ½" x 12 ½" Fabric E strip, (1) Block One square, (1) 2 ½" x 12 ½" Fabric E strip, (1) Block Two square, (1) 2 ½" x 12 ½" Fabric E strip, (1) Block One square, (1) 2 ½" x 12 ½" Fabric E strip, (1) Block Two square and (1) 2 ½" x 12 ½" Fabric E strip, in that order from left to right, to make Row Two (Diagram 9). Repeat to make Row Six.
19. Sew together (1) 2 ½" x 12 ½" Fabric E strip, (1) Block Two square, (1) 2 ½" x 12 ½" Fabric E strip, (1) Block One square, (1) 2 ½" x 12 ½" Fabric E strip, (1) Block Two square, (1) 2 ½" x 12 ½" Fabric E strip, (1) Block One square and (1) 2 ½" x 12 ½" Fabric E strip, in that order from left to right, to make Row Four (Diagram 9). Repeat to make Row Eight.
20. Sew together the (9) pieced Rows, lengthwise and in numerical order from top to bottom, to make the 58 ½" x 58 ½" Quilt Center (*Dark Version*) (Diagram 9).

Windows

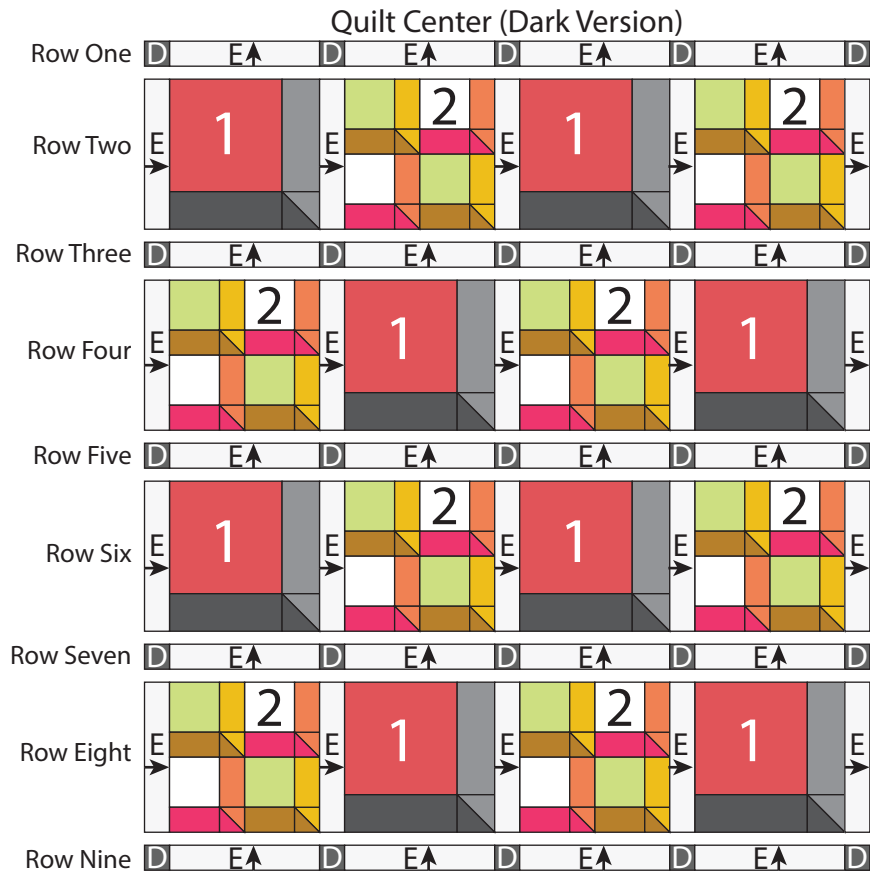
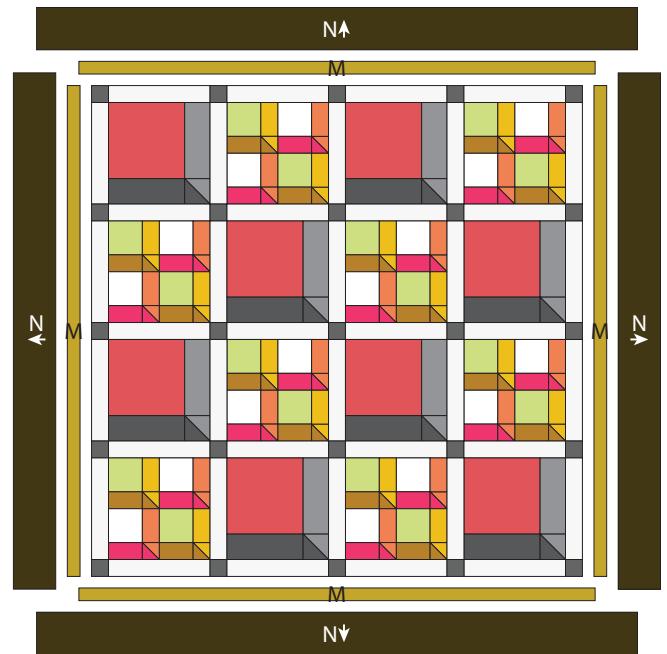


Diagram 9

21. Sew (1) 2" x 58 1/2" Fabric M strip to each side of the Quilt Center (*Dark Version*). Sew (1) 2" x 61 1/2" Fabric M strip to the top and bottom of the Quilt Center (*Dark Version*).
22. Sew (1) 5 1/2" x 61 1/2" Fabric N strip to each side of the Quilt Center (*Dark Version*). Sew (1) 5 1/2" x 71 1/2" Fabric N strip to the top and bottom of the Quilt Center (*Dark Version*) to make the Dark Version Quilt Top.



Windows

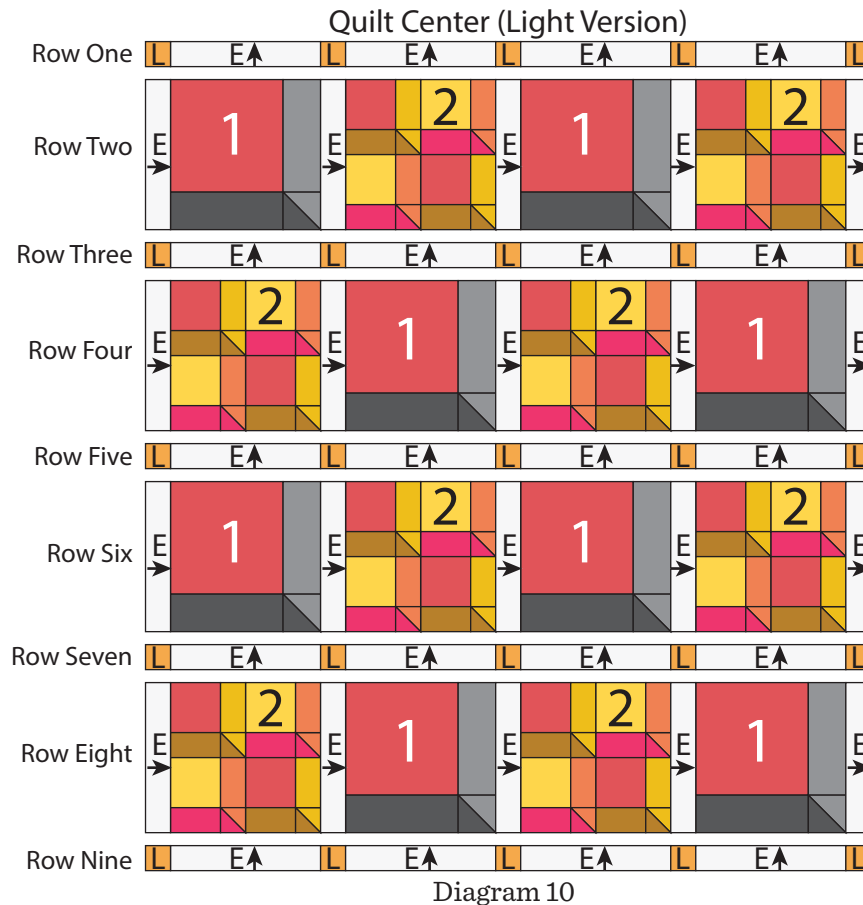
Quilt Center Assembly (*Light Version*):

23. Sew together (5) 2 1/2" Fabric L squares and (4) 2 1/2" x 12 1/2" Fabric E strips, alternating them from left to right, to make Row One (Diagram 10). Repeat to make Row Three, Row Five, Row Seven and Row Nine.

24. Sew together (1) 2 1/2" x 12 1/2" Fabric E strip, (1) Block One square, (1) 2 1/2" x 12 1/2" Fabric E strip, (1) Block Two square, (1) 2 1/2" x 12 1/2" Fabric E strip, (1) Block One square, (1) 2 1/2" x 12 1/2" Fabric E strip, (1) Block Two square and (1) 2 1/2" x 12 1/2" Fabric E strip, in that order from left to right, to make Row Two (Diagram 10). Repeat to make Row Six.

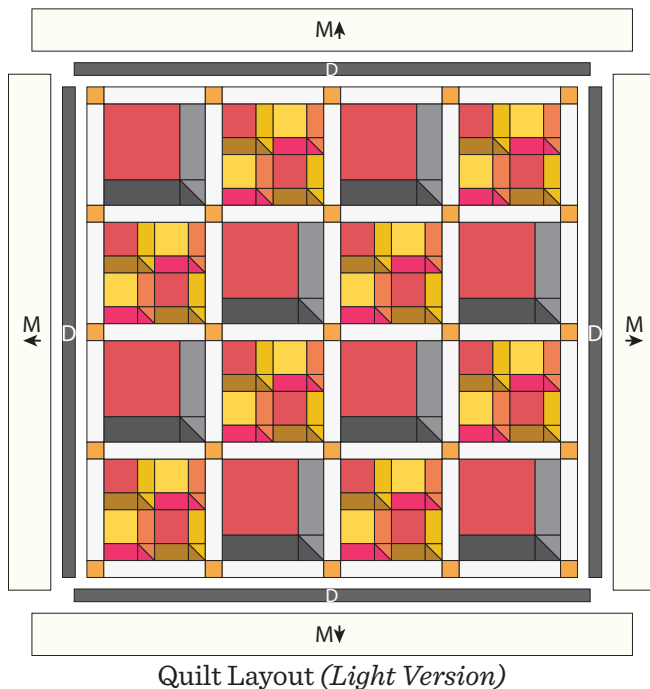
25. Sew together (1) 2 1/2" x 12 1/2" Fabric E strip, (1) Block Two square, (1) 2 1/2" x 12 1/2" Fabric E strip, (1) Block One square, (1) 2 1/2" x 12 1/2" Fabric E strip, (1) Block Two square, (1) 2 1/2" x 12 1/2" Fabric E strip, (1) Block One square and (1) 2 1/2" x 12 1/2" Fabric E strip, in that order from left to right, to make Row Four (Diagram 10). Repeat to make Row Eight.

26. Sew together the (9) pieced Rows, lengthwise and in numerical order from top to bottom, to make the 58 1/2" x 58 1/2" Quilt Center (*Light Version*) (Diagram 10).



Windows

- 27.** Sew (1) 2" x 58 1/2" Fabric D strip to each side of the Quilt Center (*Light Version*). Sew (1) 2" x 61 1/2" Fabric D strip to the top and bottom of the Quilt Center (*Light Version*).
- 28.** Sew (1) 5 1/2" x 61 1/2" Fabric M strip to each side of the Quilt Center (*Light Version*). Sew (1) 5 1/2" x 71 1/2" Fabric M strip to the top and bottom of the Quilt Center (*Light Version*) to make the Light Version Quilt Top.



Finishing the Quilt (*Both Versions*)

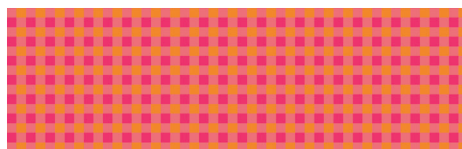
- 29.** Layer and quilt as desired.
- 30.** Sew together the (8) Fabric F binding strips end to end with 45-degree seams. Fold this long strip in half lengthwise with wrong sides together and press.
- 31.** Bind as desired.

Jinny

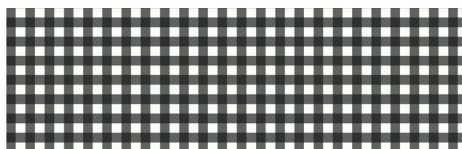
Alison Glass



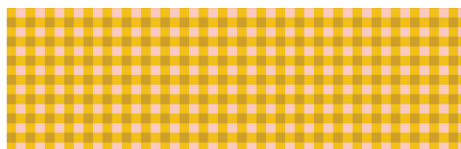
Yardages listed below are for the Dark Version of the quilt. Please reference Page 3 for the Light Version fabric requirements.



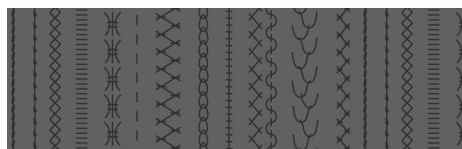
10328-E 1/3 yd



10328-K 3/8 yd



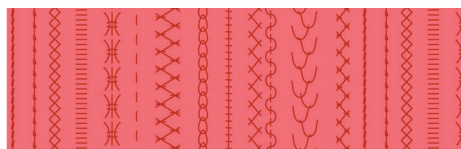
10328-Y 1/3 yd



10329-K 1/4 yd



10329-L 1 1/8 yds



10329-R 2/3 yd

(binding)



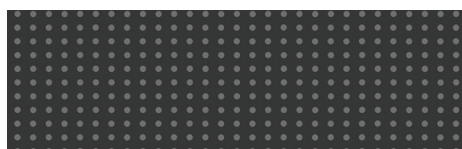
10330-E



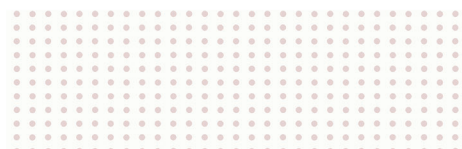
10330-O



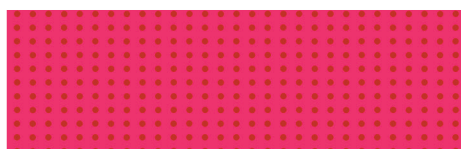
10330-Y



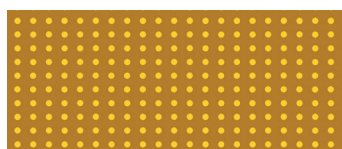
10331-K 3/8 yd



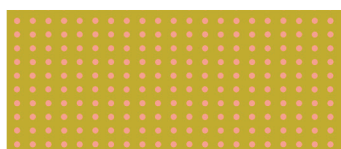
10331-L



10331-R 1/3 yd



10331-Y 1/3 yd



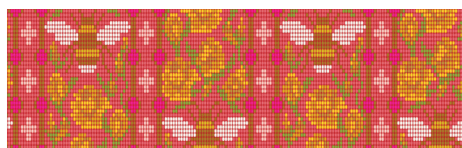
10331-Y1 1/2 yd



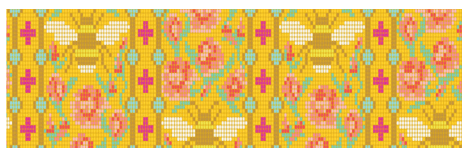
10332-K 1 1/3 yds



10332-L



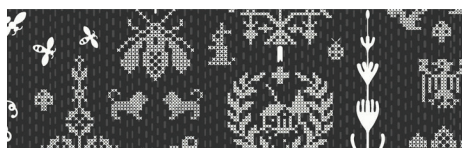
10333-R 2/3 yd



10333-Y



10333-Y1



10334-K



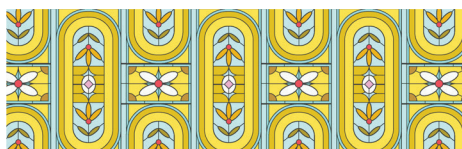
10334-R 3/8 yd



10334-Y



10335-T 3/8 yd



10335-Y



10335-Y1

Bolts needed to cut project kits: 15 yds = 1 bolt

Fabrics shown are 25% of actual size.

Backing (Your Choice)

4 1/2 yds

Free Pattern Download Available

1384 Broadway New York, NY 10018

Tel. (800) 223-5678 • andoverfabrics.com